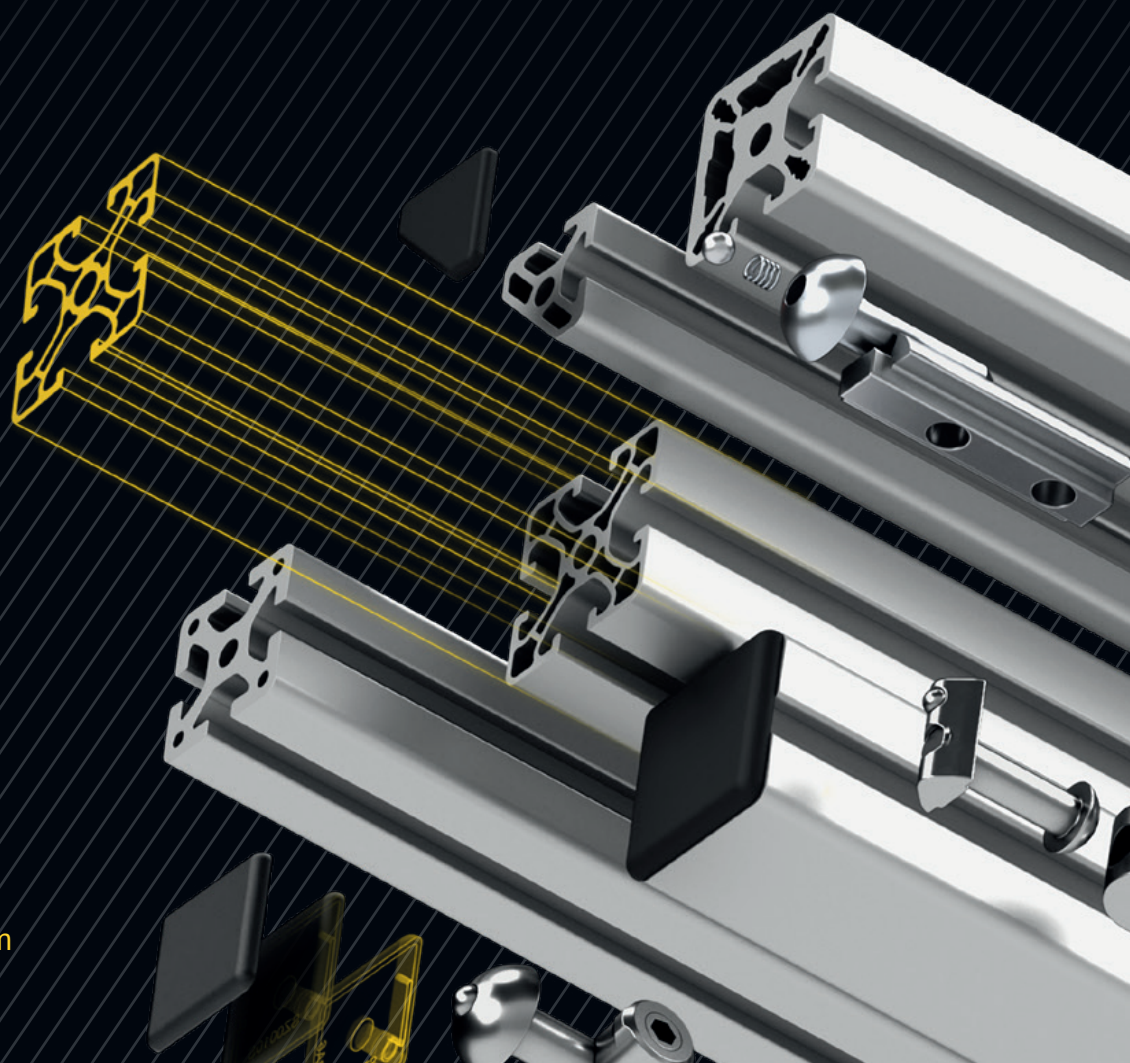


PALETTI

PRECISE, DURABLE, INDIVIDUAL

ALUMINIUM PROFILES AND AUTOMATION SYSTEM SOLUTIONS FOR INDUSTRY



www.paletti-group.com

ABOUT US

ABOUT THE PALETTI GROUP

Everything's perfect with Paletti – when the company was founded, this statement was our namesake. And as casual as the saying may seem, it reflects exactly what our customers can expect: Anyone who chooses aluminium profiles or system solutions from Paletti always makes a good choice.



WHAT WE DO

We manufacture innovative production equipment that supports flexibility and efficiency in mechanical and automation engineering. Our focus is on the development and production of a modular profile system made of aluminium. This forms the basis for individual customer solutions.



WHAT SERVICE WE OFFER

We offer a professional all-round service. From planning to development and production to the installation in the plant. Our experts support our customers in every step of the process.



HOW WE WORK

We are equipped with the most modern CNC-machines and testing rooms. Our qualified team of engineers and specialists works on the basis of CAD/CAM and supports our customers with creativity, flexibility and commitment.



WHAT ADVANTAGES WE HAVE

We are only satisfied when our customers are. And to achieve this, we place particular emphasis on: highest quality, absolute precision work, an optimal price/performance ratio and timely order processing

THE APPROPRIATE SOLUTION

THE FIELDS OF APPLICATION

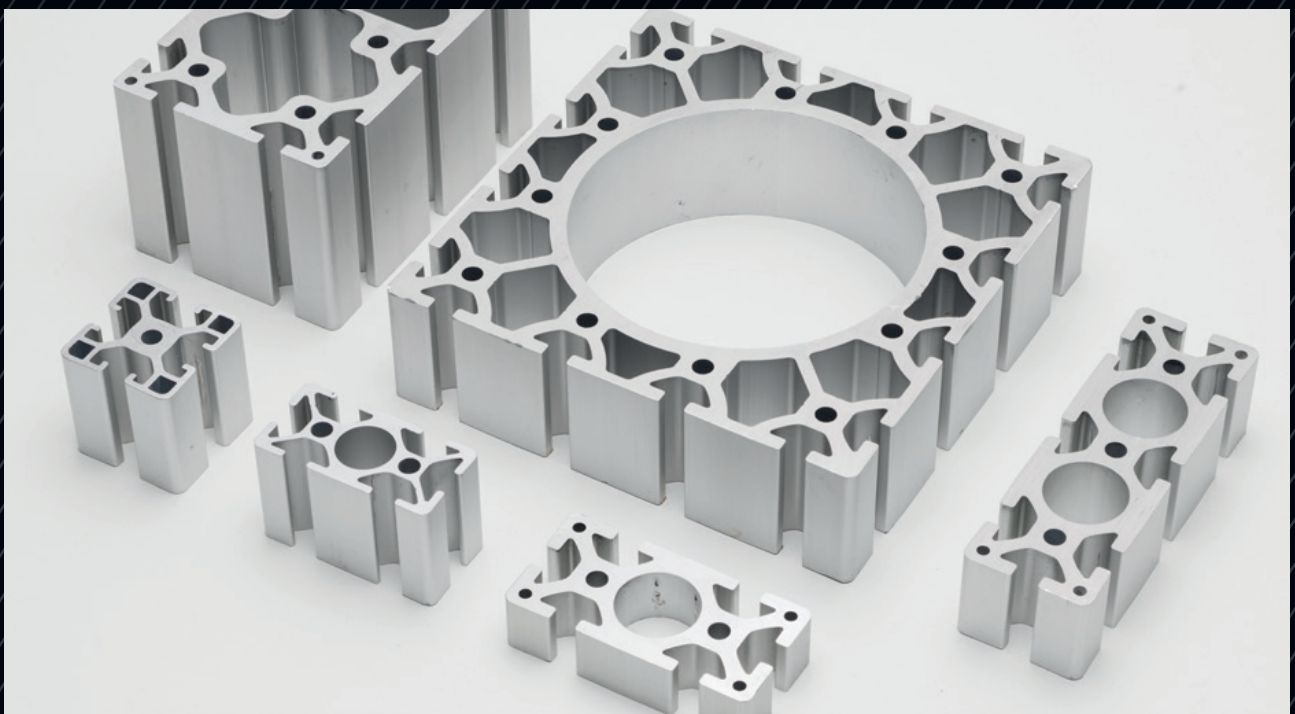
With our aluminium profiles and system solutions, we can be found in – almost – all areas of application. Industrial Machinery – Automation – Metrology – Material Handling – Conveyor technology – Laser safety enclosures – Cleanroom solutions – Protection and Separating Wall System – Laboratories – Medical technology – Industry – Private Applications. Wherever aluminium profiles can support the work of our customers, we demonstrate that you can rely on our profiles all around.



IT STARTS WITH A STRONG BASE

STANDARD ALUMINIUM PROFILES

Aluminium profiles are used in almost all industries. That's why at Paletti you will find a wide range of extruded aluminium profiles that impress with the highest precision, durability and sustainability and that can be used in a wide variety of industries, and applications.



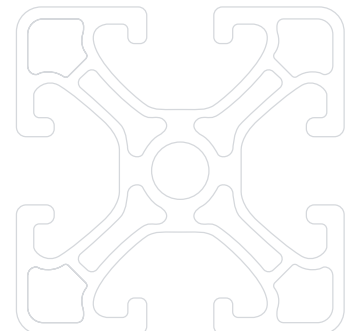
UNIVERSAL APPLICATIONS

PROFILE SYSTEMS

The solution fits the need, which is why Paletti uses the highest quality aluminium profiles to ensure the best solution for your application.

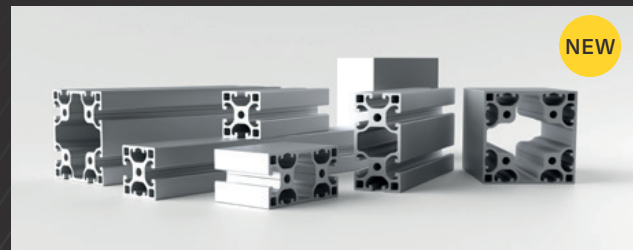
Paletti's aluminium profile systems were developed as a modular profile system to meet the requirements of mechanical and automation engineering. As a result, they are compatible with each other, particularly torsion-resistant, versatile and have become indispensable in a wide range of sectors and industries. They come in different series, dimensions and thicknesses (geometries). They are easy to assemble and can be easily combined with other

Paletti assemblies, e.g. laser safety enclosures, linear systems, conveyor and workstation systems. All installed elements are reusable, protected with an anodized layer against environmental influences such as moisture, air and light, and thus sustainable in their use. Or in other words: Our aluminium profile systems deliver what Paletti promises.

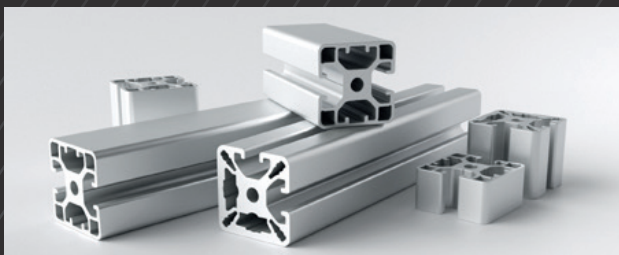


PALETTI ALUMINIUM PROFILE OUR SERIES

Our profile series are designed with an 8 mm t-slot geometry. With the exception of profile series 20 with a 5 mm t-slot geometry.



PROFILES 40 R1



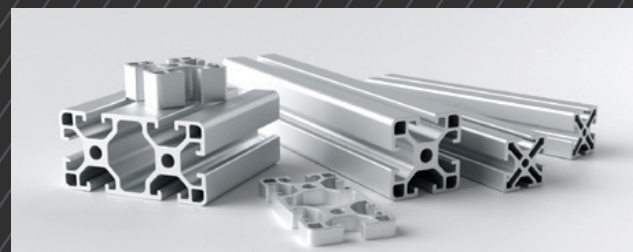
PROFILES 40



PROFILES 30



PROFILES 20



INCH PROFILES

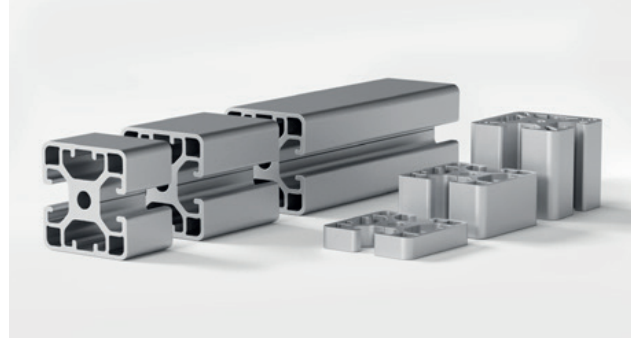
PALETTI ALUMINIUM PROFILES

FASTENERS AND SERVICE



FASTENERS

With the right connection technology, our aluminium profiles can be combined precisely and with high stability. It's easily customizable for any application. It is as simple as that!



MACHINING OF PROFILES AND COMPONENTS

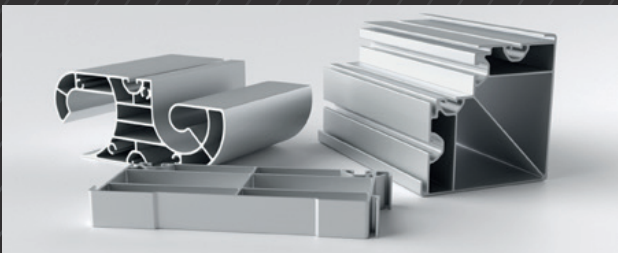
We are also the specialists when it comes to machining aluminium profiles. With our CNC-controlled machining centers we mill, saw or drill the aluminium profile if required.



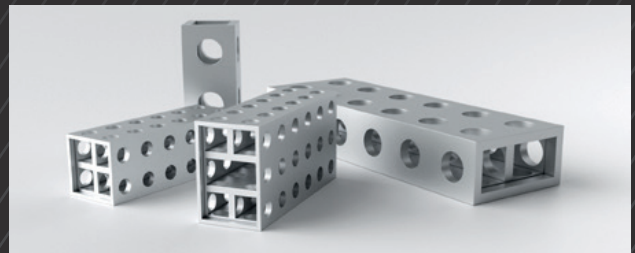
PROFILES FOR PROTECTION AND SEPARATION SYSTEMS



PROFILES FOR LINEAR TECHNOLOGY



PROFILES FOR LASER SAFETY ENCLOSURES



PRECISION PROFILES



SPECIAL PROFILES



You can find our full range of profiles here.

ALUMINIUM PROFILE-MODULAR SYSTEM

INDIVIDUAL PARTS AND ACCESSORIES

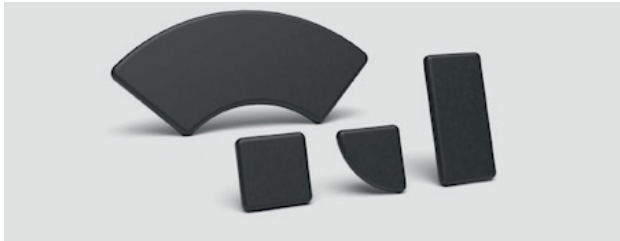
Tailored to your needs, we design and construct exactly according to your specifications. Together with us, you determine the design and functionality, which is optimised by the multitude of optional extras for your increase in efficiency and quality.

On the basis of the modular principle, the individual parts and accessories can be used in the same way for the 40, 30 and inch profile series, thus increasing flexibility.



PALETTI ALUMINIUM PROFILES

BOUNDLESS DIVERSITY



COVER CAPS



FOOT, FLOOR AND PORTAL PLATES



CABLE DUCTS + COVERS



PNEUMATIC CONNECTOR



ADJUSTABLE FEET



ANGLE FEET



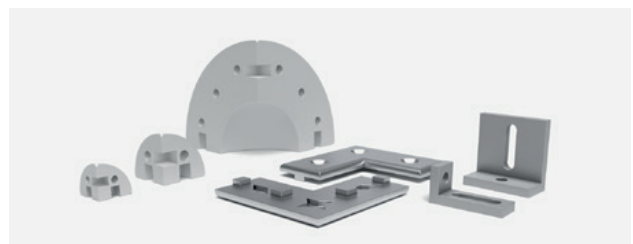
HINGES AND JOINTS



WHEELS + ROLLERS



MONITOR / SCREEN HOLDER



MOUNTING BRACKET, ROUND CORNER AND KNOT METALSHEETS

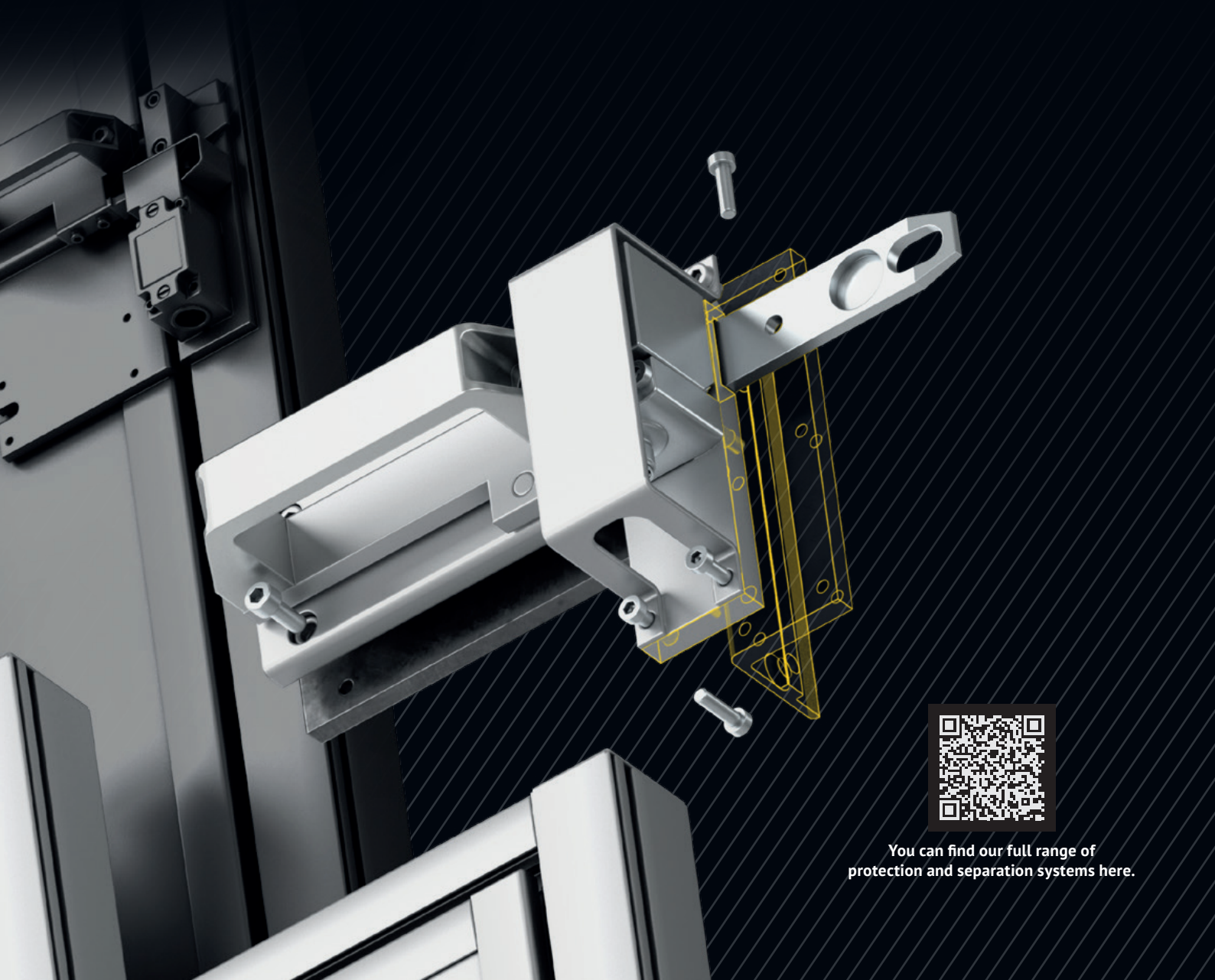
SAFELY SEPARATED

PROTECTION AND SEPARATING WALL SYSTEMS

For more than 30 years, Paletti has been producing a wide variety of protective and safety guarding for people and machines.

Regardless of whether people need to be protected or demarcated from machines, work or office areas – when

it comes to protective and partition walls, we are exactly the right contact. For more than 30 years, Paletti has been producing a wide variety of safety devices – from fencing with wire mesh to protection systems with panel elements to complete machine enclosures.



You can find our full range of protection and separation systems here.

PROTECTION AND SEPARATING WALL SYSTEMS

PRECISE PROTECTION



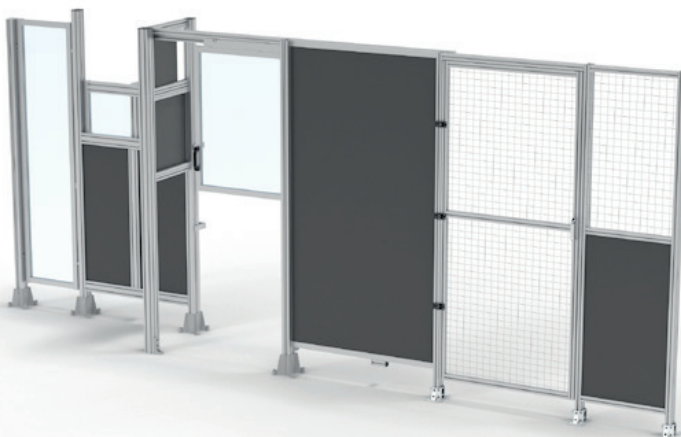
PROTECTIVE FENCES

With our flexible protective fence system, you can build a custom-fit, complete security system.



SEPARATING WALLS

Perfect protection for people and consistent safeguarding of machines – our partition wall systems are based on the Paletti aluminium profiles and can therefore be easily extended or modified as required.



SAFEGUARDINGS

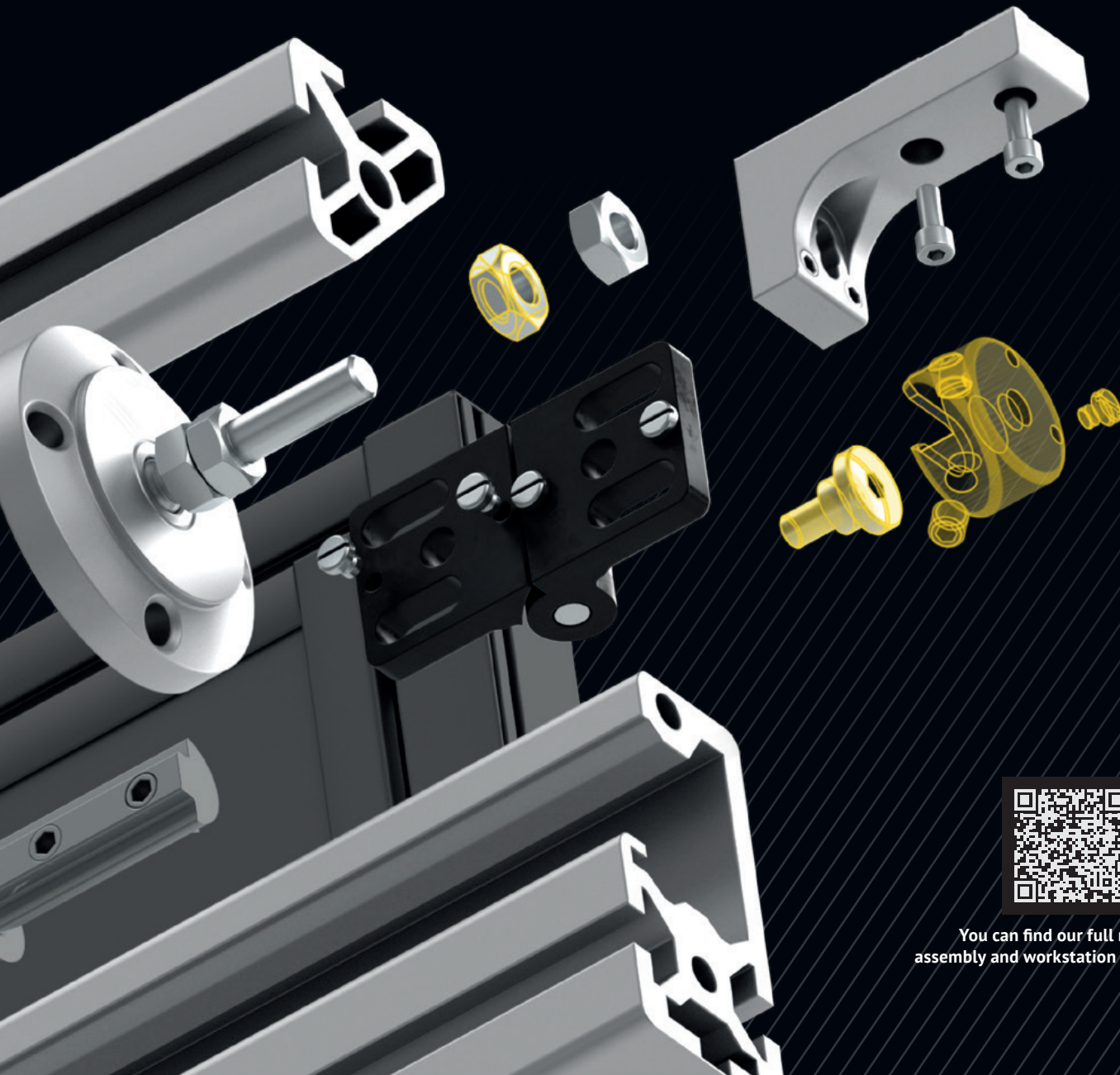
Paletti offers guards that are mounted directly on your machine.

INDIVIDUAL, FLEXIBLE, ERGONOMIC

ASSEMBLY AND WORKSTATION SYSTEMS

Paletti offers a wide range of workstations for all work requirements - from assembly workstations and packing tables to laboratory workbenches. Completely individual and ergonomic on request, tailored to your customer requirements for greater efficiency at work.

From design and assembly to commissioning, we work closely with you to fulfill the customer's requirements. Thanks to our modular aluminium profile system, we can easily expand, rebuild and add to all designs at any time.



You can find our full range of
assembly and workstation systems here.

FROM THE MODULAR SYSTEM

ASSEMBLY AND WORKSTATION SYSTEMS FROM THE MODULAR SYSTEM

With its extensive system components and aluminium profile modular system, Paletti Profilsysteme offers efficient, ergonomic, and standardised assembly and workstation systems. These standard systems provide the foundation for tailoring solutions to meet individual requirements at any time, fully in line with the principles of workplace optimisation following the 5S method.



SORT



SYSTEMATISE



SHINE



STANDARDISE



SELF-DISCIPLINE

ERGONOMIC WORKSTATIONS...

Our ergonomic workplace systems aim to increase efficiency and well-being in equal measure. The primary aim is to design work processes in such a way that performance and productivity are optimized without compromising the health of employees.

...WITH ALL THE NECESSARY INDIVIDUAL ELEMENTS:

- ▶ Table superstructures for base frames
- ▶ Material and tool provision
- ▶ Underbench cabinet systems
- ▶ Information and media provision
- ▶ Lighting
- ▶ Peripheral devices

CO-OPERATION WITH FRAUNHOFER AND DELTA3

SMART DIGITAL ASSISTANCE SYSTEM

Companies today face challenges like increasing flexibility demands, shorter production cycles, and growing cost pressures. Smart digital assistance systems help streamline workflows, enhance efficiency, and tackle these complexities.

The Alino assistance platform from delta3, which is based on the XTEND system developed by the Fraunhofer Institute, is tailored to the optimization of picking and assembly tasks.

With the support of our partner delta3, this solution ensures seamless integration and effective implementation. The result: higher efficiency, greater flexibility and increased quality for your production to better meet the operational challenges of the future:

- ▶ Increasing complexity from diverse variants
- ▶ Constantly evolving work requirements.
- ▶ Maintaining high-quality standards.
- ▶ Managing employee turnover and the shortage of skilled labor

With this digital assistance system, employees are guided step by step through the assembly process, ensuring accuracy and efficiency. The core of the system lies in its app, accessible on tablets or smartphones, which provides detailed instructions. Additionally, components to be handled and individual assembly steps are displayed on a monitor or projected directly onto the work surface, offering intuitive and precise guidance.

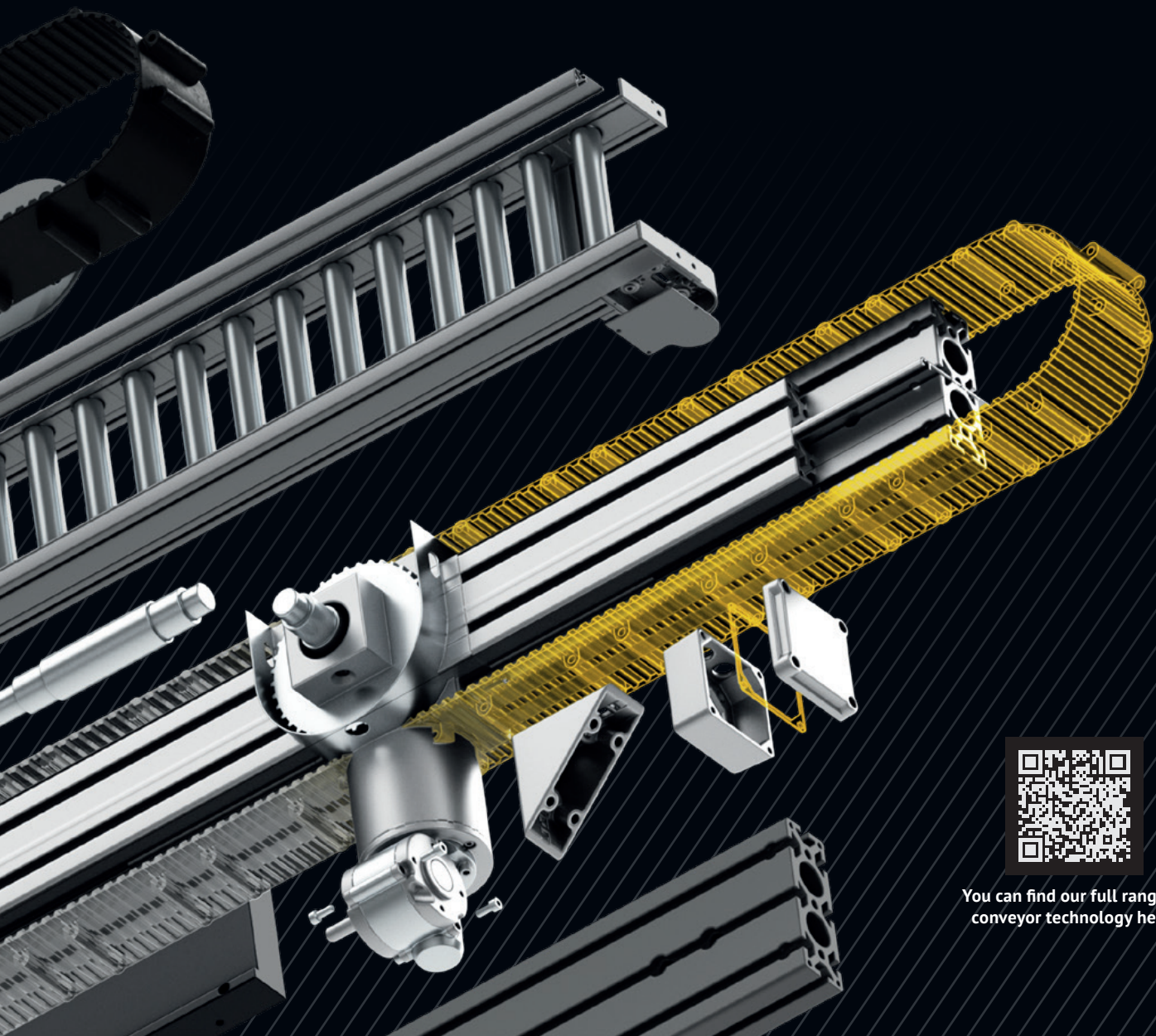
MATERIAL IN MOTION

CONVEYOR TECHNOLOGY

Our conveyor systems are durable, flexible and always precisely tailored to our customer's needs. You can rely on us. Thanks to our extensive line of modular aluminium profiles, Paletti's conveyor systems are durable, flexible, sustainable and always configured to your exact needs.

We offer customers an extensive range of fully customi-

zable solutions that are easily assembled using Paletti's proven connection and clip technology. Similarly, our T-slot construction provides simple mounting options that make it easy to customize and add accessories. As a result, our conveyor systems can be quickly disassembled, replaced, and expanded upon to meet your evolving material handling needs.



You can find our full range of conveyor technology here.

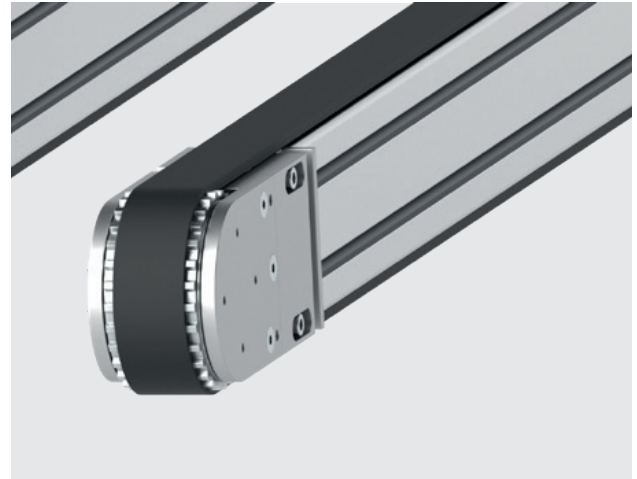
CONVEYOR TECHNOLOGY

MATERIAL IN MOTION



FLAT BELT CONVEYOR

The belt conveyor framework is constructed from our standard profiles Raster 40. The wood or metal sheet is used to support the conveyor belt. The conveyor belts are purchasing to customer requirements.



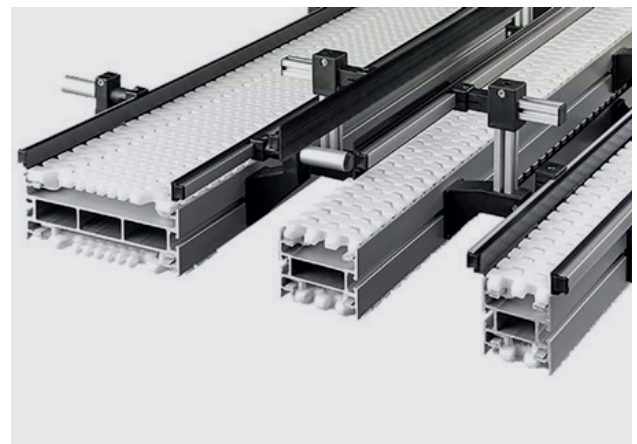
TIMING BELT CONVEYOR

Paletti's standard Raster 40 profiles form the robust frame of the timing belt conveyors. The conveyors have a selection of drive units available to suit most needs. Power is transmitted via a gearbox, with the conveyor belt being tensioned by two deflection units.



ROLLER CONVEYOR

For driven roller conveyors, Paletti manufactures a special profile consisting of four individual profiles for easy assembly and disassembly. For non-driven roller conveyors, the standard profile is used. In conjunction with some additional systems, any conveyor or transport job can be accomplished.



PLASTIC LINK CHAIN CONVEYOR

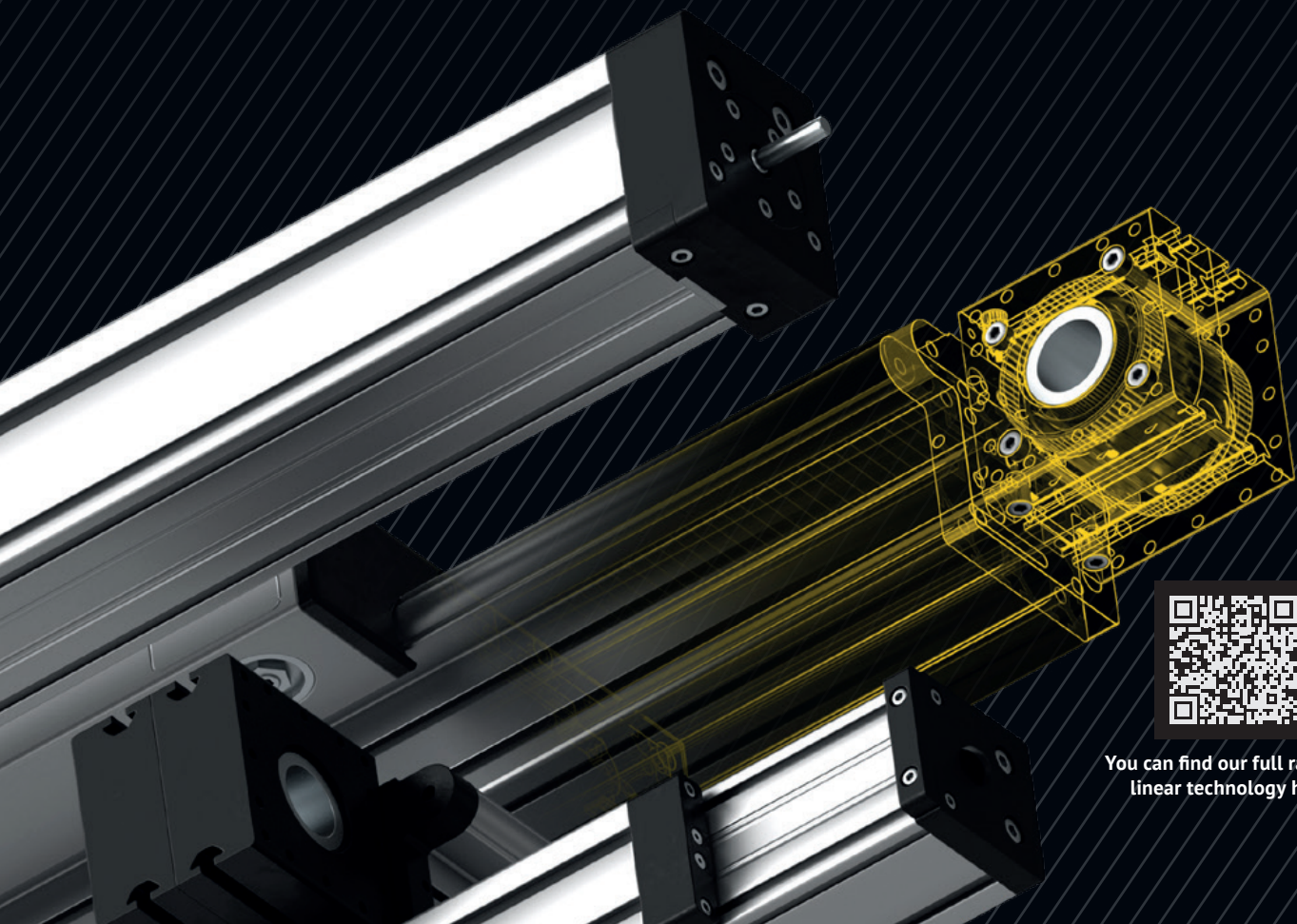
Conveyor belts with link chains – also known as modular belts – are used in particular for the transport of unit loads, which sometimes have to go around bends. The basis for this are again standard profiles 40 as well as the proven drive components.

THERE IS MOVEMENT IN HERE

LINEAR TECHNOLOGY

When reliable and precise movements are required, Paletti offers a range of linear motion systems that will fit your needs. Our linear actuator product line includes timing belt drives, recirculating ball screw or trapezoidal drives, and non-driven linear slides. Paletti's linear actuators can be adapted to fit individual customer requirements, whether as a single linear axis, or a multi-axis gantry system additional with a combination of electric motors and gearbox units.

Based on our versatile modular profile system and our CNC machining capabilities, we design your linear system according to your needs and requirements.



You can find our full range of linear technology here.

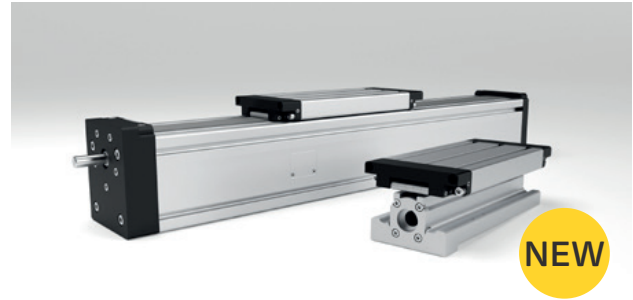
LINEAR TECHNOLOGY

FLEXIBLE AND RELIABLE



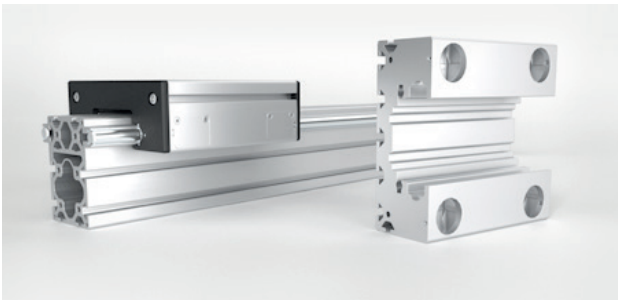
INTERNAL DOUBLE GUIDE WITH TIMING BELT DRIVE

Designed for high forces and fast speeds. To protect the internal guides against dirt, the profile is closed with a cover strip.



INTERNAL DOUBLE GUIDE WITH SPINDLE DRIVE

Designed for high forces and high positioning accuracy. To protect the internal guides against dirt, the profile is closed with a cover strip.



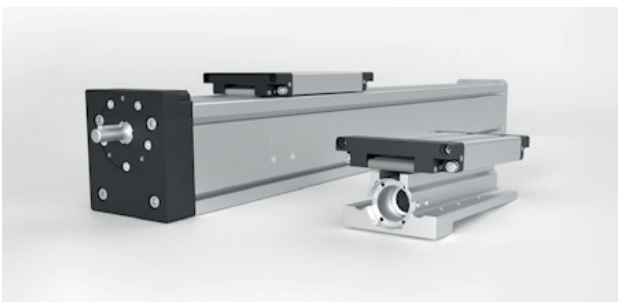
LINEAR GUIDE SYSTEMS

Linear systems for carrying load for manual positioning or parallel guidance.



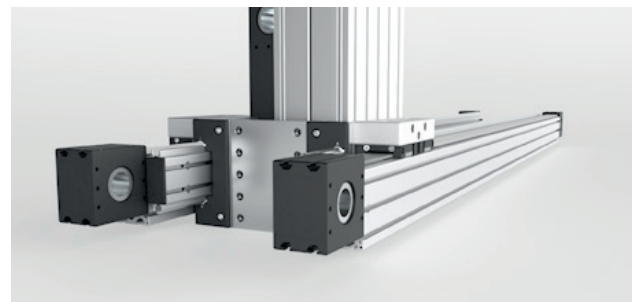
TIMING BELT DRIVEN LINEAR SYSTEMS

Linear systems for long strokes and high speeds. Paletti also offers Omega drives for Z-axis pick and placement needs.



BALL SCREW AND TRAPEZOIDAL SCREW DRIVEN LINEAR SYSTEMS

Linear systems ideally suited for larger forces and high positioning accuracy.



MULTI-AXIS GANTRY SYSTEMS

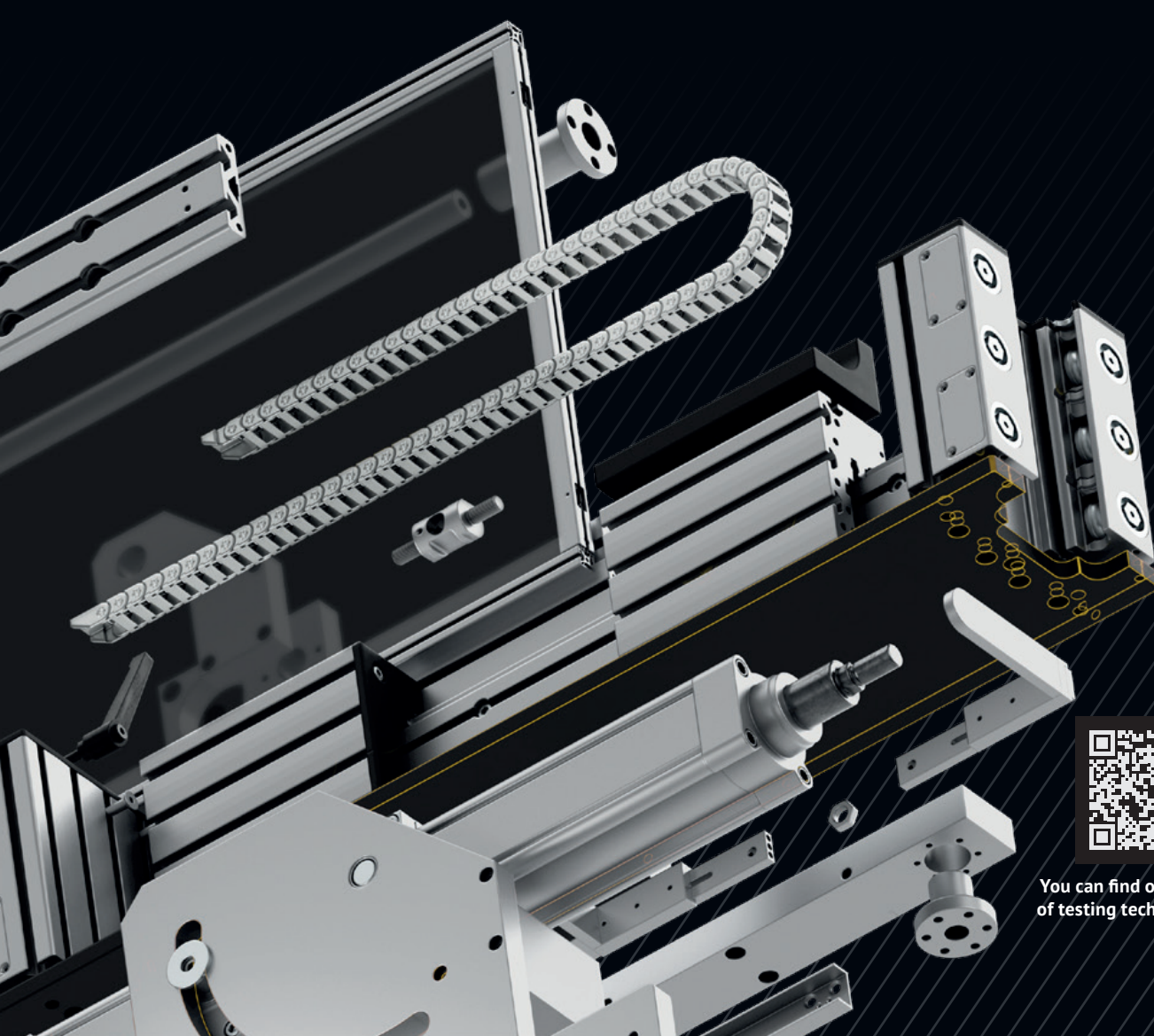
By combining individual linear axis our engineers are able to produce complex multi-axis gantry systems according to the customer's requirements.

SAFE IS SAFE

TESTING TECHNOLOGY

With a targeted policy of expansion, the Paletti Group expands its know-how in the field of test benches and will in future handle this area completely in-house.

A major focus of the test benches is furniture testing, where we now supply everything from a single source, from planning and execution to installation and training at the customer's premises. Through the constant further development of the test benches together with the testing institutes and manufacturers, our specialists achieve the optimal adaptations to the demanding requirements of the testing task.



You can find our full range of testing technology here.

TEST STAND TECHNOLOGY

CREATIVE, INDIVIDUAL AND RELIABLE

For many years, Paletti has been a reliable and innovative partner for test engineering requirements with its extensive range of aluminum profiles. Thanks to this experience, all test stands are delivered with the well-known quality, technical perfection and powerful software for Windows PCs.

All test sequences and control parameters are recorded and monitored in real time. The predefined test sequences

can be parameterised and described via the test item management. By using Ethernet, you can be sure that you are using state-of-the-art technology.

The integrated transducers and parameter management offer you the possibility to calibrate and adjust all actuators and sensors conveniently. Modern tools such as curve recorders, auto-calibration and trend analysis are available for this purpose.

TEST BENCHES FOR THE FURNITURE INDUSTRY

- ▶ Furniture fittings testing
- ▶ Seat and chair testing
- ▶ Table and mattress testing
- ▶ Armrest testing

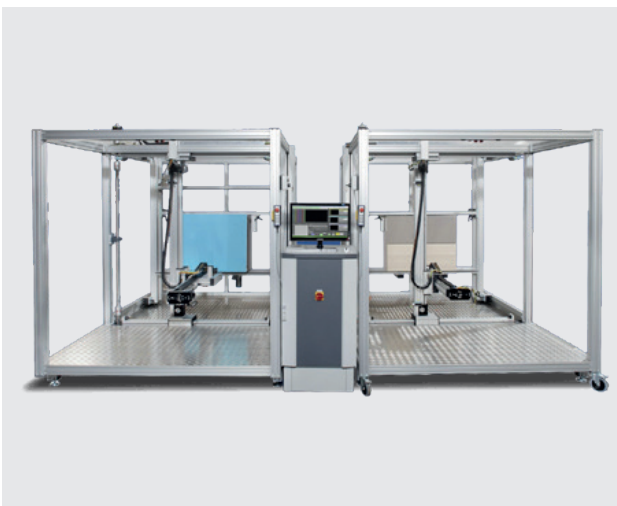
DEVELOPMENT AND COMPONENT TEST BENCHES

- ▶ Endurance testing
- ▶ Vibration- and production testing
- ▶ 20 t test press

TEST BENCHES FOR TEST INSTITUTES AND MANUFACTURERS

- ▶ Multicontour testing
- ▶ Linear axis testing
- ▶ Bending-change testing
- ▶ Side-to-side testing
- ▶ Displacement testing

Double folding hinge test bench for furniture



Bending change test stand with servo axes



ON THE SAFE SIDE

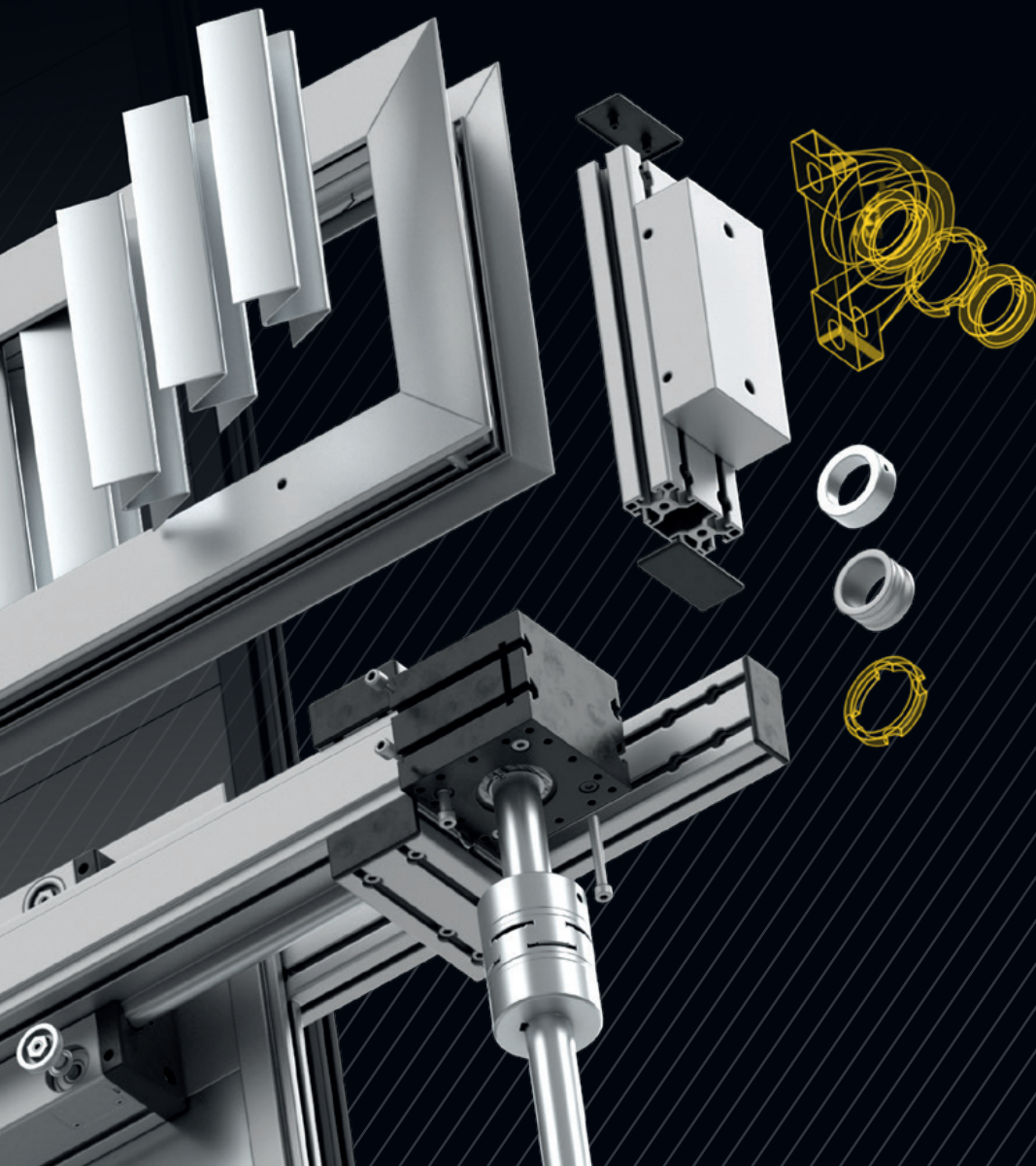
LASER SAFETY ENCLOSURES MADE FROM ALUMINIUM PROFILES

Paletti's self-supporting laser enclosures are suitable for applications with high-power lasers up to 8 kW and higher and have a worldwide patented system design. They fulfill the safety and quality requirements per ANSI and EN standards, and are tested and certified according to DIN EN 60825 "Laser equipment" and DIN EN ISO 11553-1:2005 "Laser processing machines".

The modular structure of our aluminium profiles makes it possible to create protective enclosures of almost any

shape and size. Thanks to our patented wall structure and flexible corner system, radii or corners can also be created outside 90°. Paletti's standard 40 series t-slotted profiles can be easily integrated into our safety enclosures thanks to the common 8mm t-slot in the profiles.

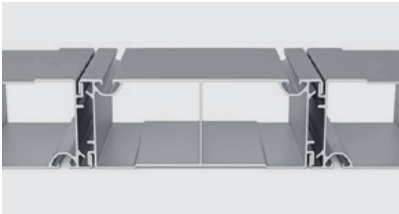
By the way: Our protective enclosures can also be configured as soundproof enclosures by adding sound-absorbing panels.



You can find our full range of laser safety enclosures [here](#).

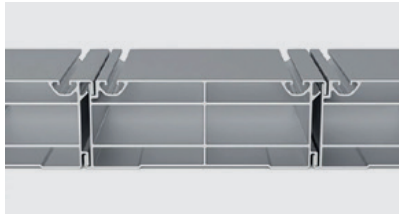
LASER SAFETY ENCLOSURES

PROFILES WITH SAFETY REQUIREMENTS



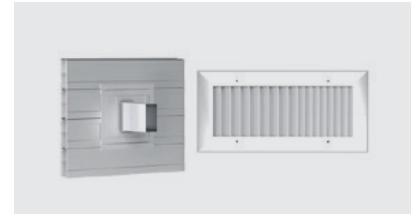
WALL PROFILES

- ▶ Ideal, interlocking labyrinth system
- ▶ Double-walled structure
- ▶ 8 mm t-slot which is compatible to 40 mm profile series
- ▶ Light tight
- ▶ Protection against laser radiation up to 4 kW cw-Nd-YAG disk



WALL PROFILES – FOCUS AREA DESIGN

- ▶ Ideal, interlocking labyrinth system
- ▶ Four-walled structure for higher power laser applications
- ▶ 8 mm t-slot which is compatible to 40 mm profile series
- ▶ Light tight
- ▶ Protection against laser radiation up to 6 / 8 kW cw-Nd-YAG

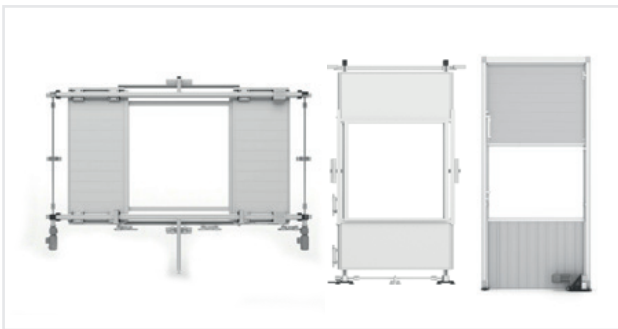


ACCESSORIES

In addition, we supply all the accessory components needed for a safe and functional booth, such as laser safe air vents, cable and fiber optic entries, pipe bushings, fire suppression, etc.

LASER SAFETY ENCLOSURES

OPTIMAL ACCESS



PROCESS DOORS, VERTICAL DOORS, SLIDING DOORS & TURNTABLE DOORS

Along with the laser safety enclosure, we offer high speed vertical process gates, lifting gates and sliding process gates that are optimally tailored to the enclosure.



MAINTENANCE AND ACCESS DOORS

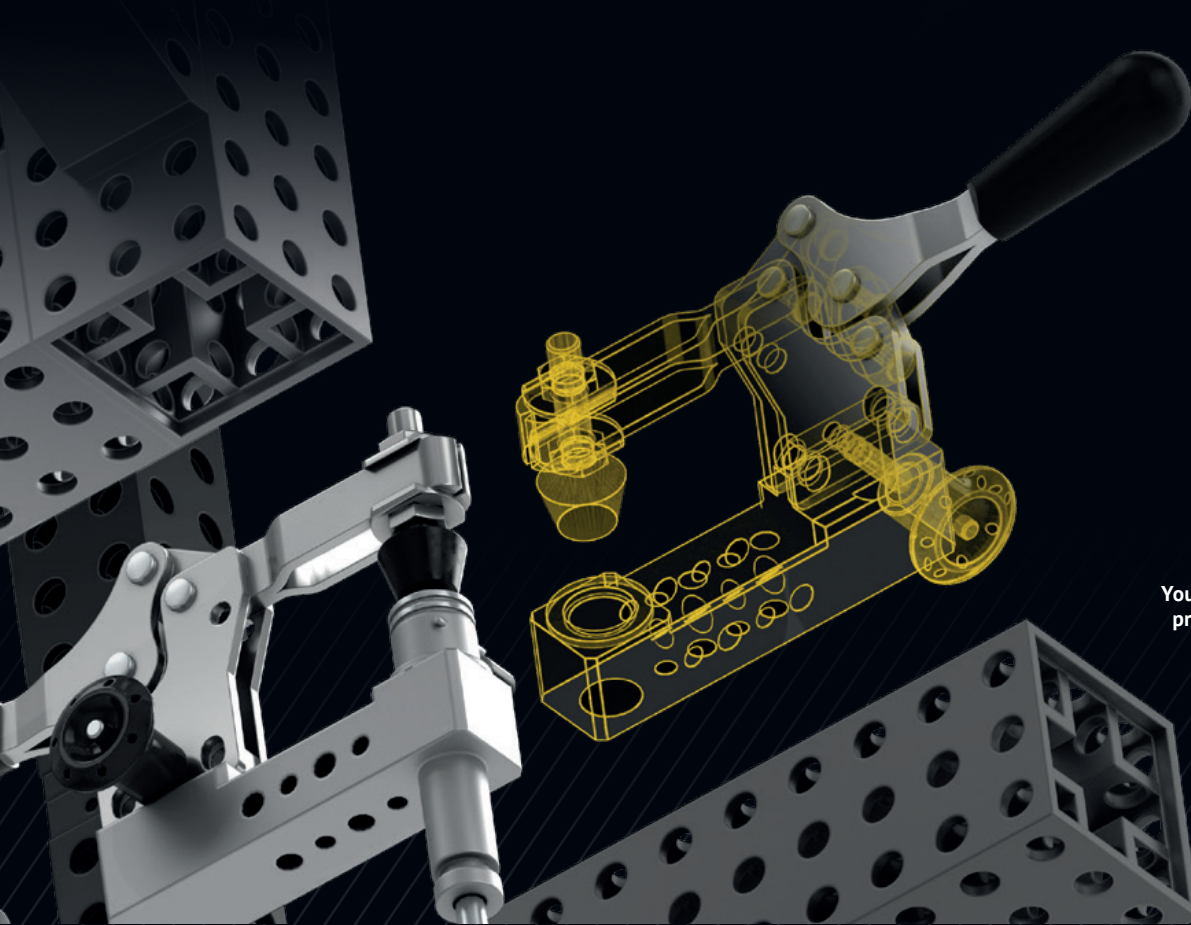
Paletti also produces custom-fit doors for personnel who work at and in the laser safety enclosures, or have to carry out maintenance tasks.

IF IT CAN NOT BE ACCURATE ENOUGH

PRECISION TECHNOLOGY

We develop and manufacture a modular system made of precision aluminum profiles, which is used for creating measurement fixtures, master jigs, control and checking fixtures, as well as base frames for cubings and gauges.

A wide range of accessories is available for adjusting, aligning, or changing the supports or clamping points. The system is designed to be reproducibly disassembled and reassembled at any time.

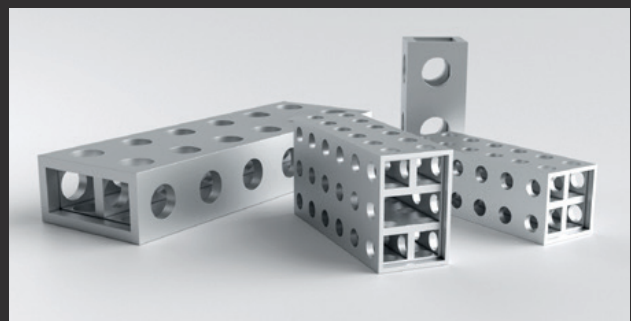


You can find our full range of precision technology here.

THE BASIS OF OUR PRECISION ENGINEERING

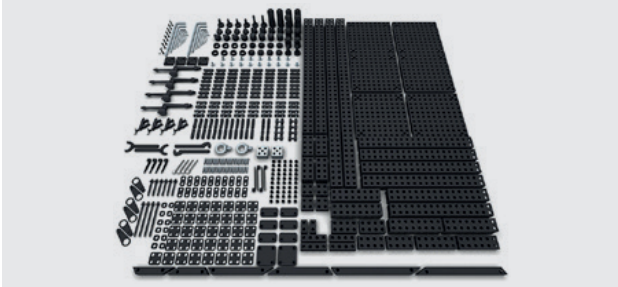
SYSTEM STRUCTURE

- ▶ precise aluminium profiles in grid 25, 40, 50
- ▶ high-strength profiles due to special alloys
- ▶ torsion-resistant system
- ▶ Profiles completely equipped with grid holes
- ▶ Connections through the use of face shims and pin bushings with form and force fit
- ▶ Stable, extensive connection system and coordinated accessories
- ▶ Always available stock



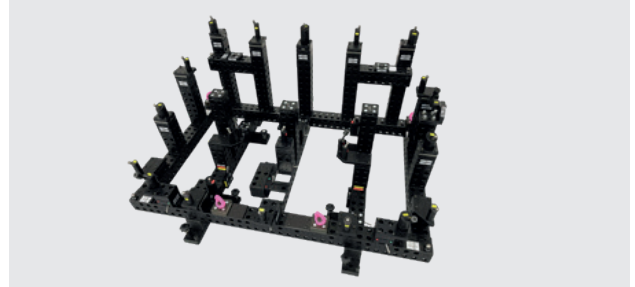
PRECISION TECHNOLOGY

MODULAR AND FLEXIBLE



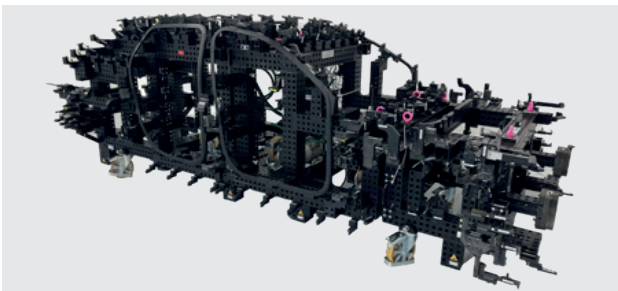
MODULAR SYSTEM KIT FOR MEASUREMENT FIXTURES

It is ideal for use in flexible setups for measurement fixtures. These are used, for example, in small series production as well as in training or laboratory environments.



HOLDING FIXTURES / CMM FIXTURES

The Paletti precision system is designed for the modular and flexible setup of measurement fixtures. This concept allows the fixtures to be created cost-effectively and reproducibly, with the option for retooling as well.



MASTER JIG (MEISTERBOCK)

Our master jigs are based on the Paletti system construction kit, featuring high-precision, torsion-resistant aluminum grid profiles. A wide range of accessories enables flexible adaptation to any requirement.



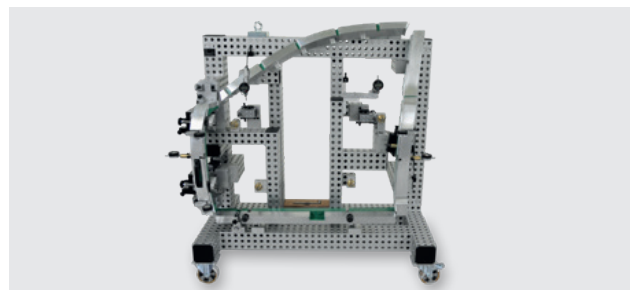
MATCHING FIXTURE

The matching fixture is used to hold individual parts of sub-weld groups and assemble them into complete assemblies. These are used for analyzing stress-free joining and for setting up production equipment.



GRID PLATES, SANDWICH PLATES, BASE FRAMES, SWING/ROTATING SYSTEMS

For the flexible setup of measurement fixtures and devices, our grid plates and base frame systems are the ideal foundation. They are made of aluminum and available in natural or black anodized finishes.



GAUGES, CUBINGS AND ANALYSIS FIXTURES

Our standard components form the basis for gauges and analysis fixtures. They can be reused multiple times, and by replacing the test flanges, highly flexible and cost-effective fixtures are created.

EVERYWHERE IN USE

PALETTI WORLDWIDE

Always nearby - when it comes to working with aluminium profiles and designing system solutions, Paletti is a competent partner with subsidiaries, system partners and representatives worldwide.



PALETTI PROFILSYSTEME GMBH & CO KG

Gewerbepark Meißen 17, 32423 Minden, Germany
Phone +49 571 38 73 03-0, Fax +49 571 3 69 97
sales@paletti-group.com
www.paletti-group.com



PALETTI PROFILSYSTEME GMBH & CO KG

Dingbreite 15, 32469 Petershagen, Germany
Phone +49 571 38 73 03-0, Fax +49 571 3 69 97
sales@paletti-group.com
www.paletti-group.com



PALETTI USA LLC

145 Keystone Drive
Montgomeryville, PA 18936, USA
Phone +1 267 2 89 00 20, Fax +1 267 2 89 00 23
sales@palettiusa.com
www.paletti-group.com



PALETTI UK LTD.

4 Britannia Way
The Valley, Bolton, Lancashire BL2 2HH, Great Britain
Phone +44 1204 522 123, Fax +44 1204 522 101
info@palettiuk.com
www.paletti-group.com

SYSTEM PARTNER



COMBIFLEX PRODUKTIE & MONTAGE B.V.

Merwedeweg 7
3621 LP Breukelen, Netherlands
Phone +31 346 264 174
Fax +31 346 264 774
info@trapo.nl, www.trapo.nl



MPL KOMPETENZ CENTER AG

Bächliweg 5, LI-9495 Triesen
Principality of Liechtenstein
Phone +423-230 19 70
Mobile +423-791 45 21
tibor.seibel@mpl-engineering.com
www.mpl.li



MPL Kompetenz Center AG

Bächliweg 5, LI-9495 Triesen
Principality of Liechtenstein
Phone +423-230 19 70
Mobile +423-791 45 21
tibor.seibel@mpl-engineering.com
www.mpl.li



LIHENG TECH (SHANGHAI) CO., LTD

Qualified Checking & Measuring
Solution Partner
3911 JIASONG BEI Rd. JIADING District
201805 Shanghai
People's Republic of China



DUALTECH S. R. O.

Gabčíkova 10
SK-841 05 Bratislava
Slovakia
Phone +421 915 998 653
dualtech@dualtech.sk
www.dualtech.sk



MERBA

ul. Nadbryczna 3
PL-63-430 Odolanow
Poland
Phone +48 600 502 618
office@paletti.com.pl
www.paletti-group.com



IPS-TEC

Poststraße 1
D-08459 Neukirchen, Germany
Phone +49 3762 7 59 31 00
Fax +49 3762 7 59 31 19
info@ips-tec.de
www.ips-tec.de



ERO-FÜHRUNGEN GMBH

Weißkreuzstraße 16
D-79843 Unadingen, Germany
Phone +49 7707 158 0
vertrieb@ero-fuehrungen.de
www.ero-fuehrungen.de



TECHNICON GMBH

Eichkoppel 14
D-24214 Gettorf, Germany
Phone +49 4346 413 050
info@technicon-germany.com
www.technicon-germany.com

WE WORK HAND IN HAND

REPRESENTATIONS



ROLLCO A/S
info@rollco.dk
www.rollco.dk



ROLLCO AB
info@rollco.se
www.rollco.se



ROLLCO OY
info@rollco.fi
www.rollco.fi



ROLLCO NORGE AS
info@rollco.no
www.rollco.no



AS-MECHANICS BVBA
info@as-mechanics.be
www.as-mechanics.be



MULTIENGINEERING ET
multiengineering@gmail.com
www.multiengineering-bg.com



MMT S.R.O.
mmt@mmt.cz
www.mmt.cz



PAYR PRODUCTION GMBH
production@payr.co.at
www.payr.co.at



MECANO SISTEMI S.R.L
mecanosistemi@tin.it
www.mecanosistemi.it



ILAN & GAVISH COMPANY
alon@ilan-gavish.com
www.ilan-gavish.com



FS SOLUTIONS B. V.
info@fssolutions.nl
www.fssolutions.nl



KLARE TECHNOLOGIES (PTY) LTD
sales@klaretech.com
www.klaretech.com



ODAN GMBH
info@odan.ch
www.odan.ch



MPL AUTOMATION SRL
info@mpl-automation.com
www.mpl-automation.com



MPL AUTOMATION SRL
info@mpl-automation.com
www.mpl-automation.com



STROJOTEHNIKA D.O.O.
info@strojotehnika.hr
www.strojotehnika.hr



STROJOTEHNIKA D.O.O.
info@strojotehnika.hr
www.strojotehnika.hr



UAB "NAUTEGA"
info@nautega.lt
www.nautega.lt



**IMASAN Makine ve Kimyevi maddeler
San. Tic. Ltd. Sti.**
imasan@imasan.com.tr
www.imasan.com.tr



**IMASAN Makine ve Kimyevi maddeler
San. Tic. Ltd. Sti.**
imasan@imasan.com.tr
www.imasan.com.tr



**IMASAN Makine ve Kimyevi maddeler
San. Tic. Ltd. Sti.**
imasan@imasan.com.tr
www.imasan.com.tr



**IMASAN Makine ve Kimyevi maddeler
San. Tic. Ltd. Sti.**
imasan@imasan.com.tr
www.imasan.com.tr



**IMASAN Makine ve Kimyevi maddeler
San. Tic. Ltd. Sti.**
imasan@imasan.com.tr
www.imasan.com.tr



PALETTI

EVERYTHING HAS ITS PLACE

ENGINEERED SYSTEM SOLUTIONS



PROFILE TECHNOLOGY



PROTECTION AND SEPARATION SYSTEMS



ASSEMBLY AND WORKSTATION SYSTEMS



CONVEYOR TECHNOLOGY



LINEAR TECHNOLOGY



TESTING TECHNOLOGY



LASER SAFETY ENCLOSURES



PRECISION ENGINEERING

Paletti Profilsysteme GmbH & Co. KG

Gewerbepark Meißen 17
D-32423 Minden
Phone +49 (571) 38 73 03-0
sales@paletti-group.com
www.paletti-group.com