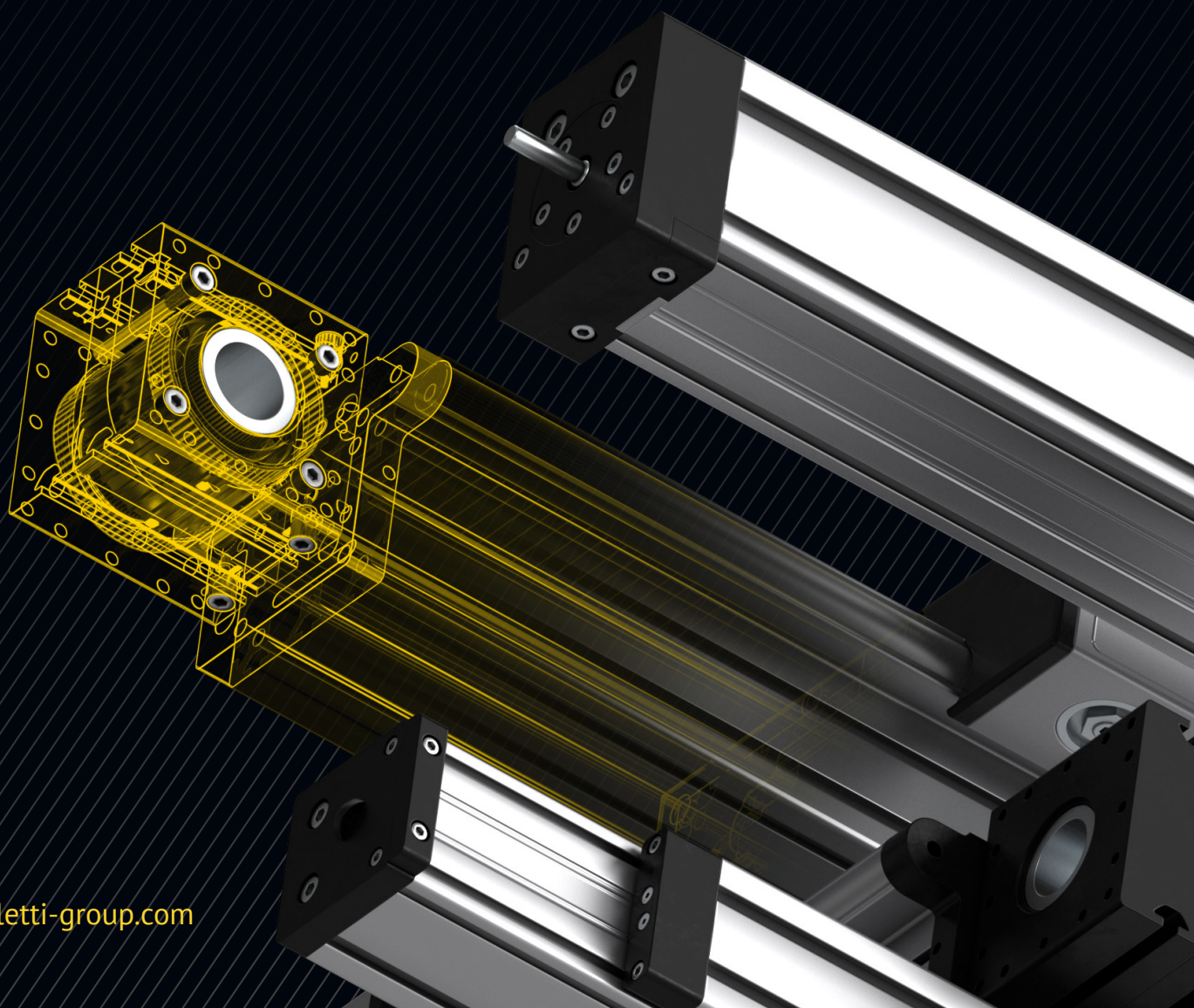
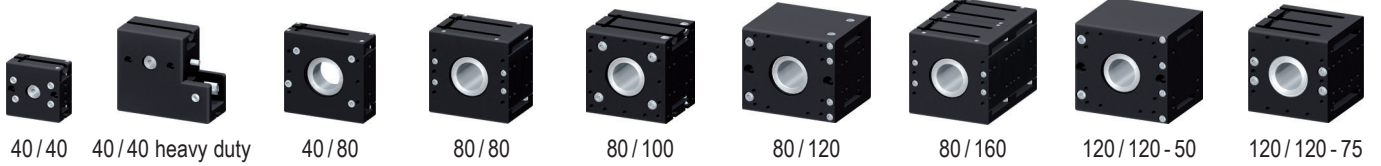


# PALETTI

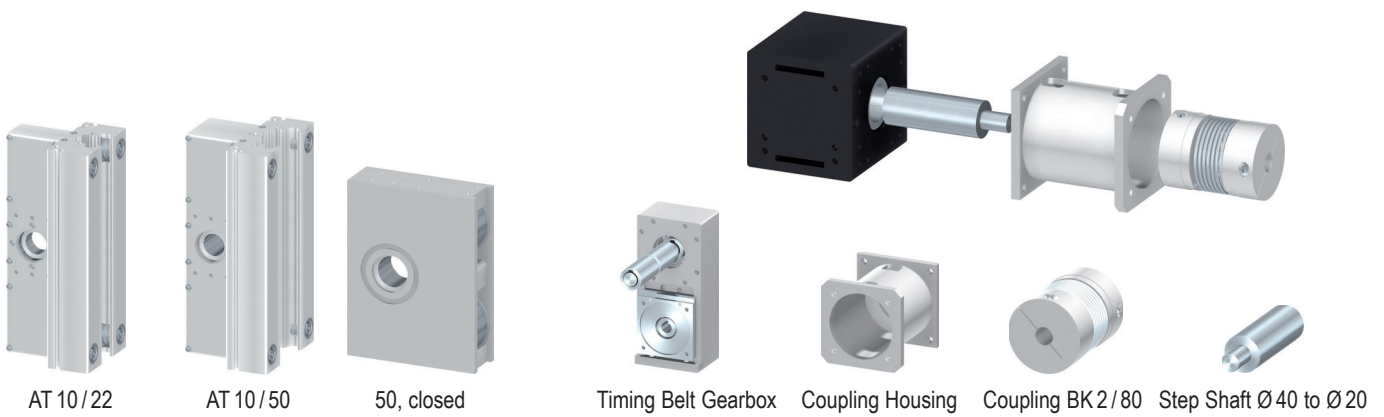
PRECISE, LONG-LASTING, INDIVIDUAL

## LINEAR MOTION SYSTEMS ACCESSORIES



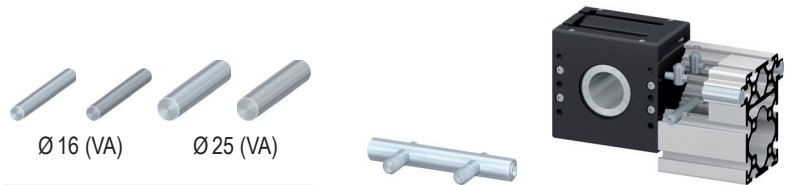


#### Pulley Assemblies



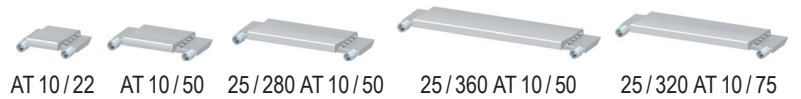
#### Omega Drives

#### Motor Connection Components



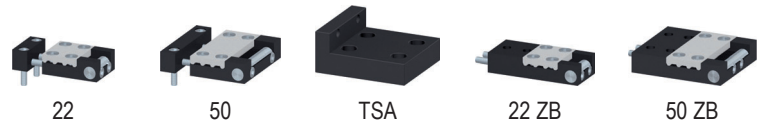
#### Timing Belts

#### Guidance Rails



#### Rollers, Roller Axles 16

#### Timing Belt Tensioners



#### Rollers, Roller Axles 25

#### Timing Belt Tensioners, external

## G Linear Motion System Accessories

### 2 Product Overview



16/160/60/2/S



16/160/140/4/S



16/160/200/4/S

Carriages 16/160 with service pockets



16/200/60/2/S



16/200/140/4/S



16/200/200/4/S



16/200/280/4/S

Carriages 16/200 with service pockets



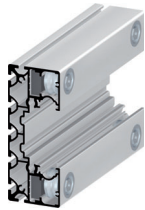
16/200/60/4 sl



16/200/140/4 sl

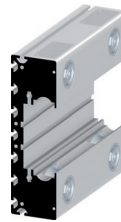


16/200/200/4 sl

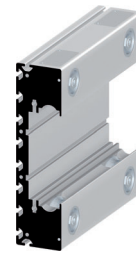


16/200/280/4 sl

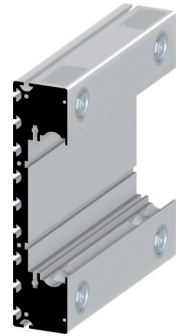
Carriages 16/200 superlight



25/280/280/4/S



25/320/320/4/S



25/360/360/4/S

Carriages 25



160



200



200 E



16 S



280



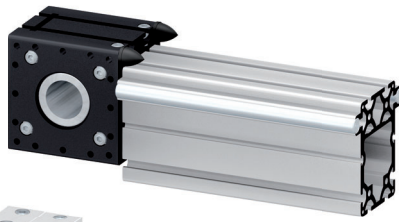
320



360

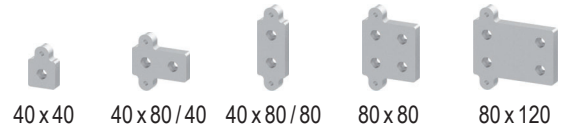
Wiper And Lubrication Systems





20x13.5 M6    21x24 M6    32x36 M8    52x58 M10    75x89 M12    M6    M8

End Stops

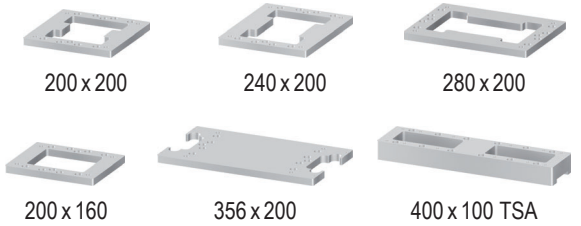
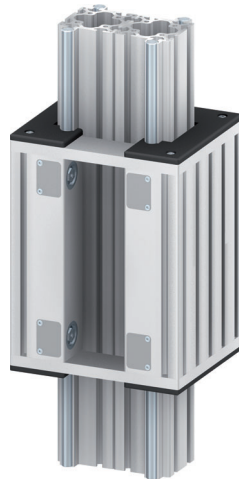


40 x 40    40 x 80 / 40    40 x 80 / 80    80 x 80    80 x 120

Guidance Rail Stop Plates 16



End Of Stroke Set 8



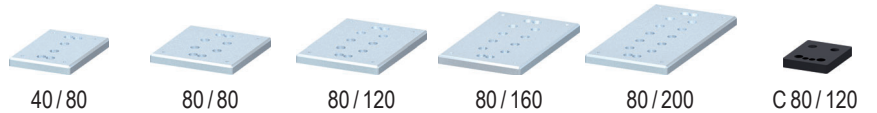
200 x 200    240 x 200    280 x 200

200 x 160    356 x 200    400 x 100 TSA

Carriage Joining Plates

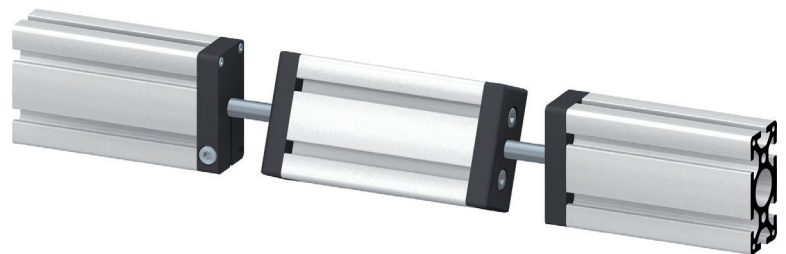
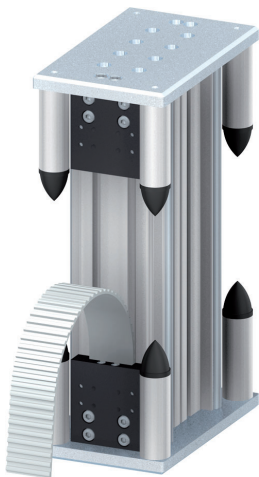


Limit Switch Cam (100, 120)



40 / 80    80 / 80    80 / 120    80 / 160    80 / 200    C 80 / 120

Fastener Attachment Plates



40 x 80    80 x 80    U 80 / 90    80 x 120

Adapter Plates for Pulley Assembly 40 / 40



40 x 80    40 x 80

Clamp Elements



40 x 80    80 x 80

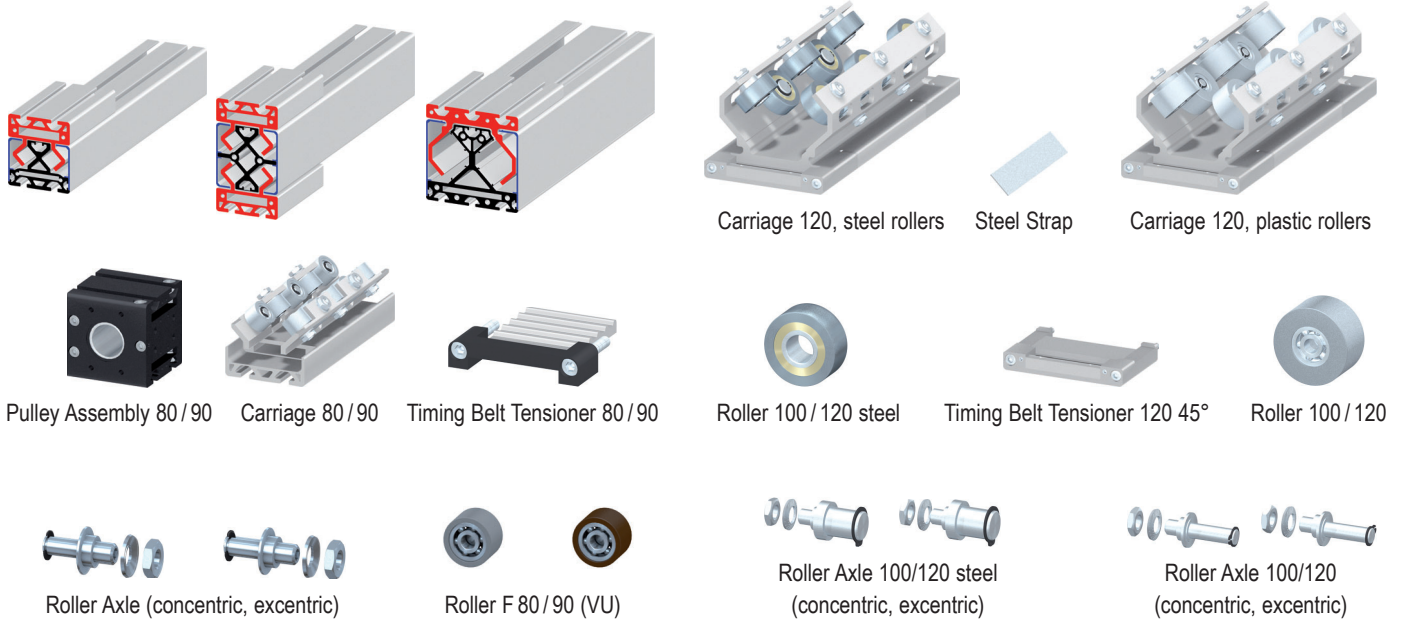
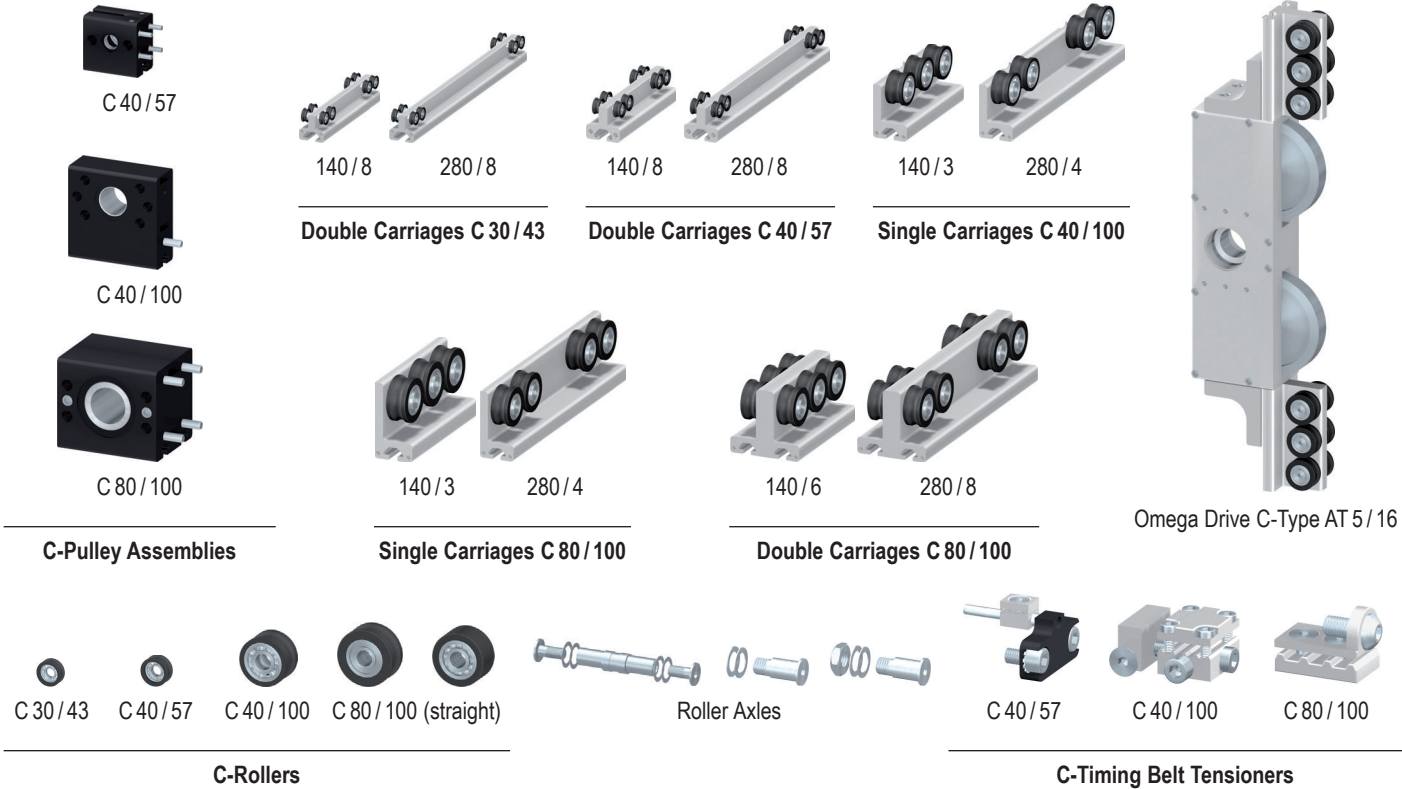
Linear Flange Plates



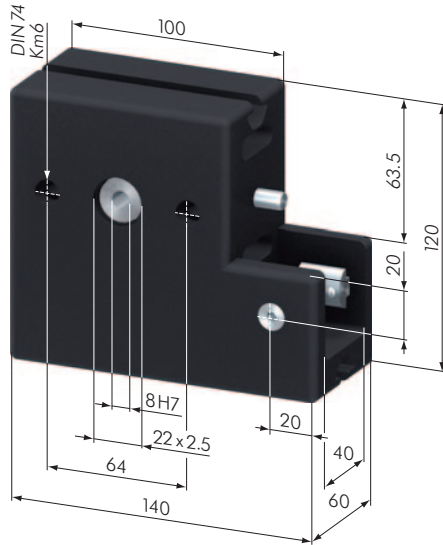
Ø 10    Ø 12    Ø 20

Guidance Rails

**G** Linear Motion System Accessories  
**4** Product Overview







SL0720S



### Pulley Assembly

Part No	Description	Weight
SL0720S	Pulley Assembly 40/40 heavy duty	

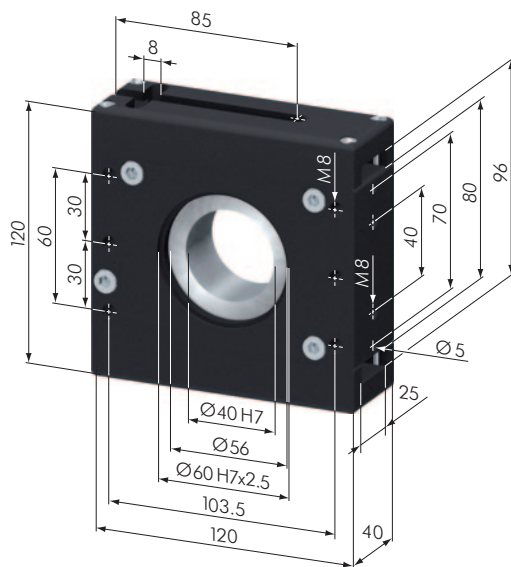
**Application:** This pulley assembly is used in conjunction with *Paletti* linear components to manufacture linear actuators.

**Material:** casing: steel, black  
cover: aluminum, black anodized

#### Technical Data:

- timing belt AT 10/22: maximum loading MD = 20 Nm
- timing belt pulley: steel, tooth pitch AT 10  
No of teeth 15
- pitch circle diameter: 47.75 mm
- bearing type: 61805-2RS
- max. bore for motor with keyway:  $\varnothing 14 H7$
- drive shaft connection:  $\varnothing 8 H7$ , max.  $\varnothing 15 H7$
- timing belt length 180°: 175.0 mm

Connected to profile via two t-nuts and doweling.  
Motor connection via flange plates per customer request.



SL0690S



### Pulley Assembly

Part No	Description	Weight
SL0690S	Pulley Assembly 40/80	1.94 kg

**Application:** This pulley assembly is used in conjunction with *Paletti* linear components to manufacture linear actuators.

**Material:** casing: steel, black  
cover: aluminum, black anodized

#### Technical Data:

- timing belt AT 10/22: maximum loading MD = 70 Nm
- timing belt pulley: aluminum, tooth pitch AT 10  
No of teeth 28
- pitch circle diameter: 89.13 mm
- max. bore diameter:  $\varnothing 40 H7$  (standard)
- bearing type: 61811-2RS
- With shrunken fit drive (steel) upon customer request (included in the price).
- max. bore for motor with keyway:  $\varnothing 30 H7$
- max. bore for motor with taper lock coupling:  $\varnothing 34 H7$
- timing belt length 180°: 260.0 mm
- timing belt length 90°: 190.0 mm

Connected to profile via two central fasteners 40 G (SV1071V).  
Motor connection via flange plates per customer request.

## Pulley Assembly

Part No	Description	Weight
SL0680S	Pulley Assembly 80/80	2.27 kg

**Application:** This pulley assembly is used in conjunction with *Paletti* linear components to manufacture linear actuators.

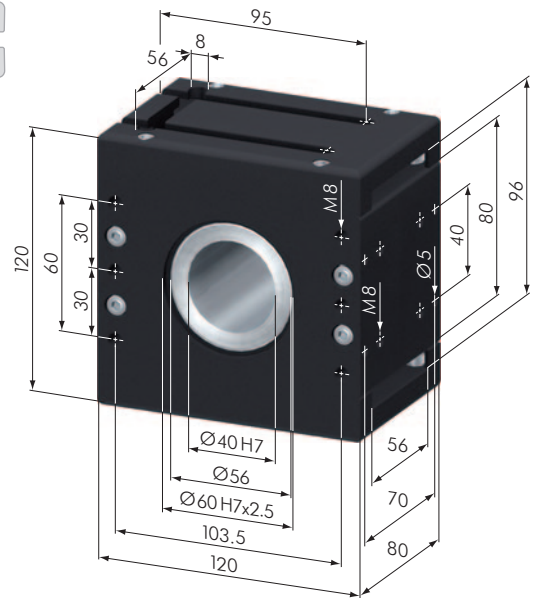
**Material:** casing und cover: aluminum, black anodized

### Technical Data:

- timing belt AT 10/50: maximum loading MD = 100 Nm
- timing belt pulley: aluminum, tooth pitch AT 10  
Ne of teeth 28
- pitch circle diameter: 89.13 mm
- max. bore diameter:  $\varnothing 40$  H7 (Standard)
- bearing type: 61811-2RS
- With shrunken fit drive (steel) upon customer request (included in the price).
- max. bore for motor with keyway:  $\varnothing 30$ H7
- max. bore for motor with taper lock coupling:  $\varnothing 34$ H7
- timing belt length 180°: 260.0 mm
- timing belt length 90°: 190.0 mm

Connected to profile via four central fasteners 40 G (SV1071V).

Motor connection via flange plates per customer request.



SL0680S

## Pulley Assembly

Part No	Description	Weight
SL0682S	Pulley Assembly 80/100	2.73 kg

**Application:** This pulley assembly is used in conjunction with *Paletti* linear components to manufacture linear actuators. This guide has larger bearings to absorb greater lateral forces.

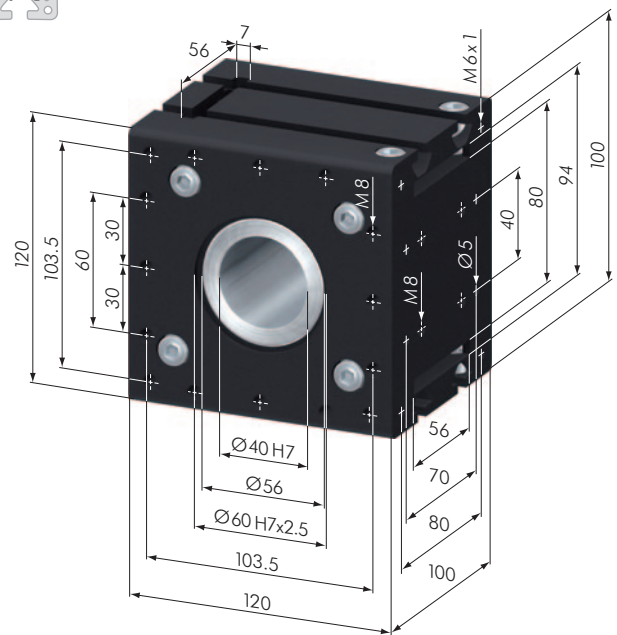
**Material:** casing: aluminum, black anodized

### Technical Data:

- timing belt AT 10/50: maximum loading MD = 120 Nm
- timing belt pulley: aluminum, tooth pitch AT 10  
Ne of teeth 28
- pitch circle diameter: 89.13 mm
- max. bore diameter:  $\varnothing 40$  H7 (standard)
- bearing type: 6011-2Z
- With shrunken fit drive (steel) upon customer request (included in the price).
- max. bore for motor with keyway:  $\varnothing 30$ H7
- max. bore for motor with taper lock coupling:  $\varnothing 34$ H7
- timing belt length 180°: 260.0 mm
- timing belt length 90°: 190.0 mm

Connected to profile via four central fasteners 40 G (SV1071V).

Motor connection via flange plates per customer request.

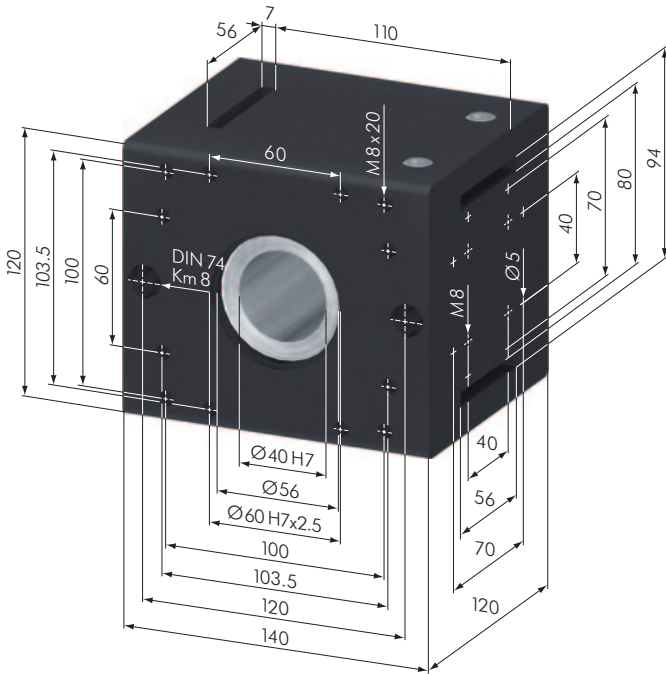


SL0682S





Pulley Assembly		
Part N°	Description	Weight
SL0684S	Pulley Assembly 80 / 120	3.35 kg



SL0684S

**Application:** This pulley assembly is used in conjunction with *Paletti* linear components to manufacture linear actuators. This guide has larger bearings to absorb greater lateral forces.

**Material:** casing: aluminum, black anodized

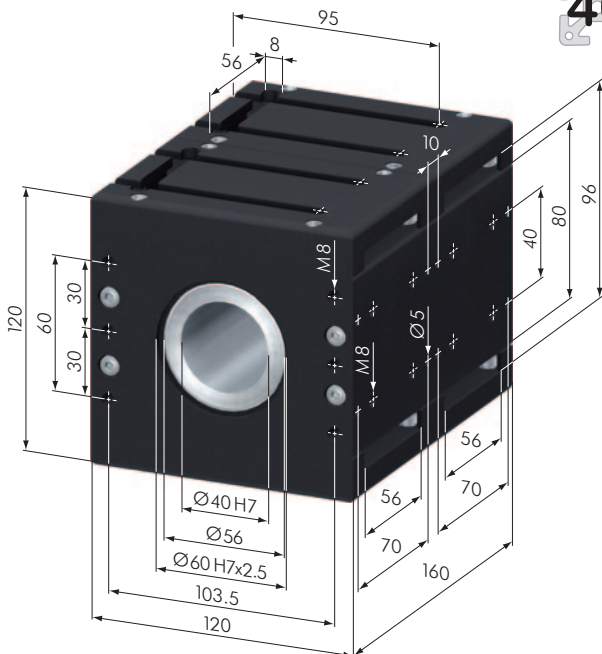
**Technical Data:**

- timing belt AT 10 / 50: maximum loading MD = 140 Nm
- timing belt pulley: aluminum, tooth pitch AT 10  
    No of teeth 28
- pitch circle diameter: 89.13 mm
- max. bore diameter: Ø 40 H7 (Standard)
- bearing type: 62211-2RS
- With shrunken fit drive (steel) upon customer request (included in the price).
- max. bore for motor with keyway: Ø 30H7
- max. bore for motor with taper lock coupling: Ø 34H7
- timing belt length 180°: 280.0 mm
- timing belt length 90°: 200.0 mm

Connected to profile via four central fasteners 40 G (SV1071V).  
Motor connection via flange plates per customer request.



Pulley Assembly		
Part N°	Description	Weight
SL0686S	Pulley Assembly 80 / 160	4.54 kg



SL0686S

**Application:** This pulley assembly is used in conjunction with *Paletti* linear components to manufacture linear actuators.

**Material:** casing: aluminum, black anodized

**Technical Data:**

- 2x timing belt AT 10 / 50 side by side: maximum loading MD = 200 Nm
- timing belt pulley: aluminum, tooth pitch AT 10  
    No of teeth 28
- pitch circle diameter: 89.13 mm
- max. bore diameter: Ø 40 H7 (Standard)
- bearing type: 61811-2RS
- With shrunken fit drive (steel) upon customer request (included in the price).
- max. bore for motor with keyway: Ø 30H7
- max. bore for motor with taper lock coupling: Ø 34H7
- timing belt length 180°: 260.0 mm
- timing belt length 90°: 190.0 mm

Connected to profile via eight central fasteners 40 G (SV1071V).  
Motor connection via flange plates per customer request.

## Pulley Assembly

Part No	Description	Weight
SL0710S	Pulley Assembly 120 / 120 - 50	



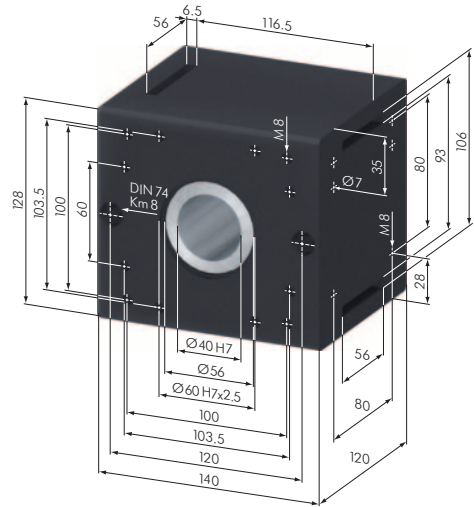
**Application:** This pulley assembly is used in conjunction with *Paletti* linear components to manufacture linear actuators.

**Material:** casing: aluminum, black anodized

### Technical Data:

- timing belt AT 10 / 50: maximum loading MD = 120 Nm
- timing belt pulley: aluminum, tooth pitch AT 10  
Ne of teeth 32
- pitch circle diameter: 101.86 mm
- max. bore diameter:  $\varnothing 40$  H7 (Standard)
- bearing type: 62211-2RS
- With shrunken fit drive (steel) upon customer request (included in the price).
- max. bore for motor with keyway:  $\varnothing 30$ H7
- max. bore for motor with taper lock coupling:  $\varnothing 34$ H7
- timing belt length 180°: 300.0 mm
- timing belt length 90°: 214.0 mm

Connected to profile via four central fasteners 40 G (SV1071V).  
Motor connection via flange plates per customer request.



SL0710S

## Pulley Assembly

Part No	Description	Weight
SL0688S	Pulley Assembly 120 / 120 - 75	3.82 kg



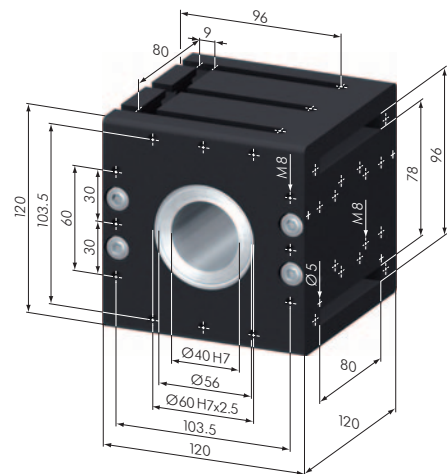
**Application:** This pulley assembly is used in conjunction with *Paletti* linear components to manufacture linear actuators.

**Material:** casing: aluminum, black anodized

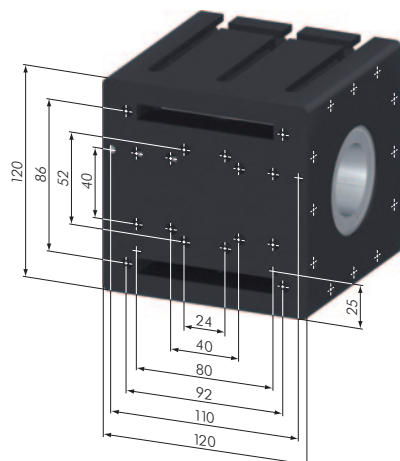
### Technical Data:

- timing belt AT 10 / 75: maximum loading MD = 120 Nm
- timing belt pulley: aluminum, Ne of teeth AT 10  
Ne of teeth 28
- pitch circle diameter: 89.13 mm
- max. bore diameter:  $\varnothing 40$  H7 (Standard)
- bearing type: 6011-2Z
- With shrunken fit drive (steel) upon customer request (included in the price).
- max. bore for motor with keyway:  $\varnothing 30$ H7
- max. bore for motor with taper lock coupling:  $\varnothing 34$ H7
- timing belt length 180°: 260.0 mm
- timing belt length 90°: 190.0 mm

Connected to profile via four central fasteners 40 G (SV1071V).  
Motor connection via flange plates per customer request.



SL0688S



Omega Drive		
Part No	Description	Weight
SL0610N	Omega Drive AT 10/50	9.5 kg

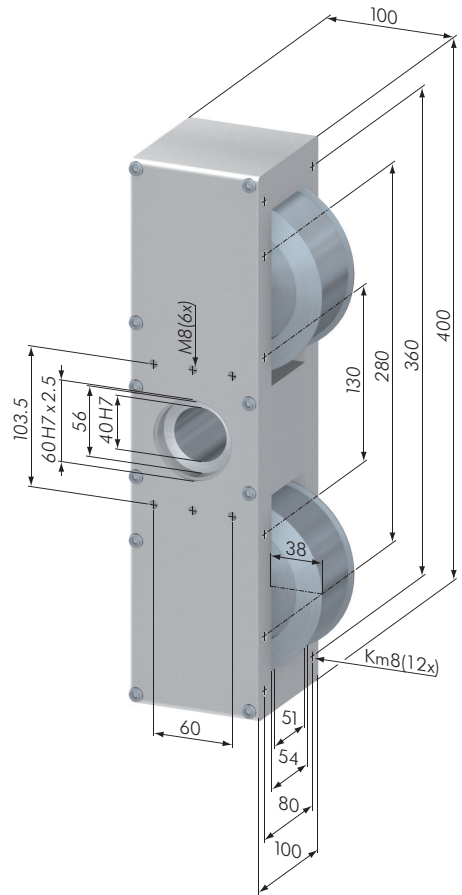


**Application:** This pulley assembly is used in conjunction with *Paletti* linear guidance components.

**Material:** casing: aluminum, natural anodized

**Technical Data:**

- timing belt AT 10/50: maximum loading MD = 100 Nm
- timing belt pulley: aluminum, tooth pitch AT 10  
    No of Teeth 28
- pitch circle diameter: 89.13 mm
- max. bore diameter: Ø 40 H7 (Standard)
- With shrunken fit drive (steel) upon customer request (included in the price).
- max. bore for motor with keyway: Ø 30H7
- max. bore for motor with taper lock coupling: Ø 34H7



SL0610N

Omega Drive		
Part No	Description	Weight
SL0612N	Omega Drive 50, Carriage	19.0 kg

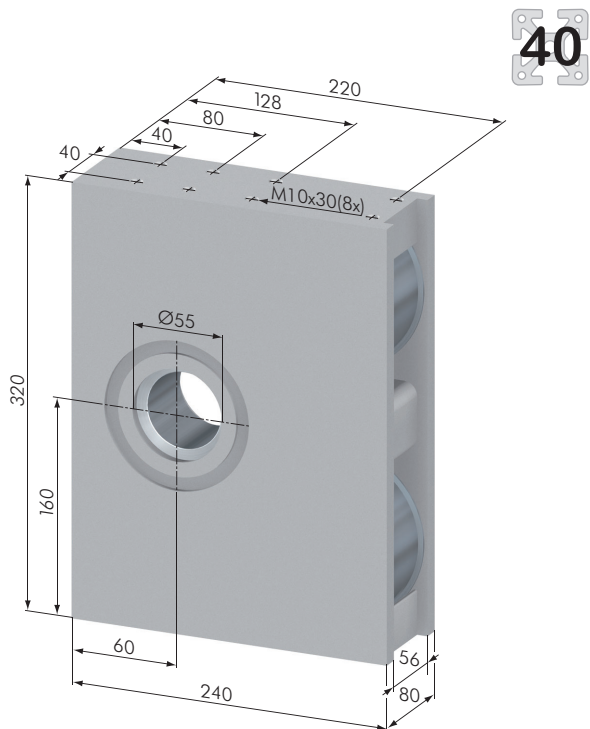


**Application:** This pulley assembly is used in conjunction with *Paletti* linear guidance components.  
Mated with carriage 16/200/400/4.

**Material:** casing: aluminum, natural anodized



SL0612N



**SL0630N**



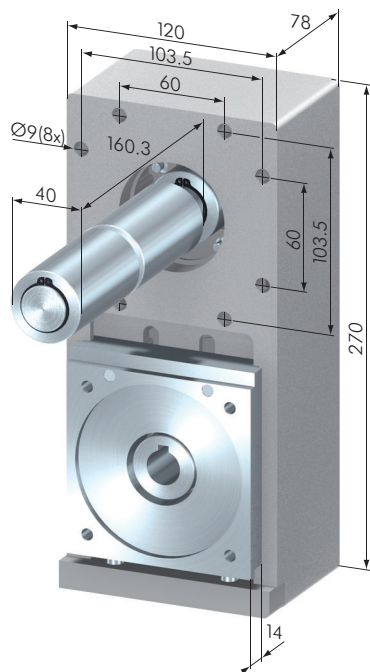
Omega Drive		
Part No	Description	Weight
SL0630N	Omega Drive 50, closed	9.5 kg

**Application:** Pulley assembly used in conjunction with *Paletti* linear guidance components.

**Material:** casing: aluminum, natural anodized

**Technical Data:**

- timing belt AT 10/50: maximum loading MD = 100 Nm
- timing belt pulley: aluminum, tooth pitch AT 10  
 № of Teeth 28
- pitch circle diameter: 89.13 mm
- max. bore diameter: Ø 40 H7 (Standard)
- With shrunken fit drive (steel) upon customer request (included in the price).
- max. bore for motor with keyway: Ø 30 H7
- max. bore for motor with taper lock coupling: Ø 34 H7



**SL5828N**



Timing Belt Gearbox		
Part No	Description	
SL5828N	Timing Belt Gearbox AT 10/50	

**Application:** Attaches to the pulley assembly and allows for the linear actuator to be powered by a belt driven system, as opposed to a direct coupled motor connection.

**Material:** casing: aluminum, natural anodized

**Technical Data:** Ratio = 1 : 1

№ of teeth 28 to 28 AT 10/50

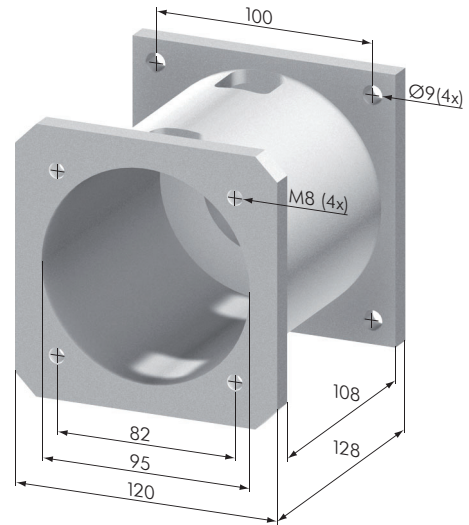
## Coupling Housing

Part No	Description	Weight
SL8100N	Coupling Housing	1.09 kg

**Application:** The coupling housing provides the support between motor and linear actuator.

Other types are available on request.

40



SL8100N

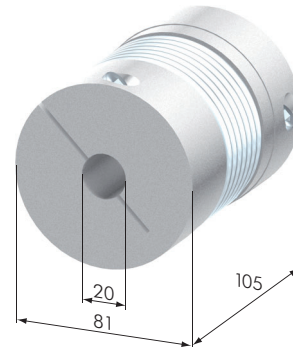
## Coupling BK 2 / 80

Part No	Description	Weight
SL8200N	Coupling BK 2 / 80	1.02 kg

**Application:** The coupling provides high torsional stiffness and smooths out misalignment between motor and linear actuator.

Other types are available on request.

40



SL8200N

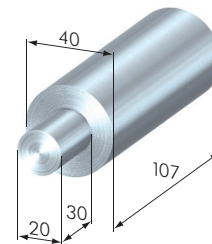
## Step Shaft Ø 40 to Ø 20

Part No	Description	Weight
SL8250N	Step Shaft Ø 40 to Ø 20	1.12 kg

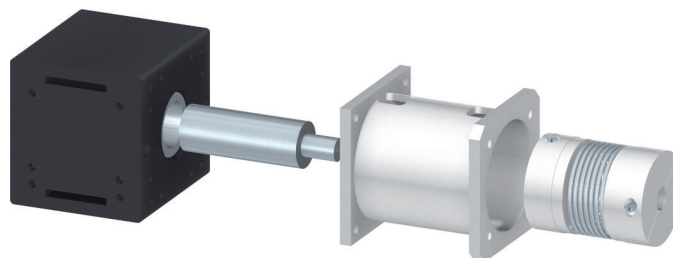
**Application:** The step shaft couples the pulley assembly with a coupling.

Other types are available on request.

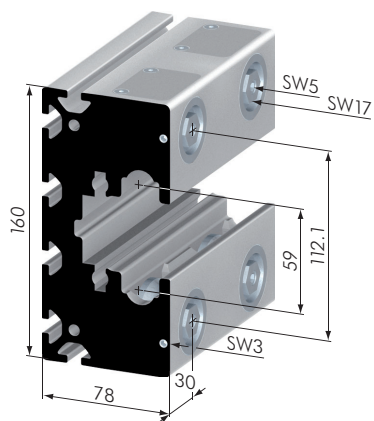
40



SL8250N



**40**



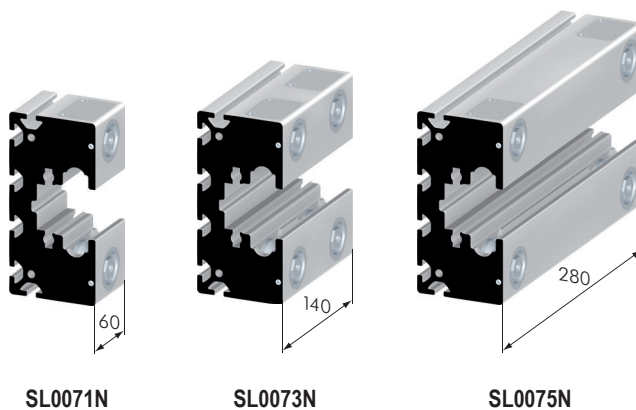
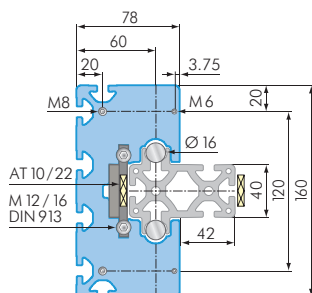
Carriage 16 / 160		
Part No	Description	Weight
SL0071N	Carriage 16 / 160 / 60 / 2 / S	1.38 kg
SL0073N	Carriage 16 / 160 / 140 / 4 / S	3.33 kg
SL0075N	Carriage 16 / 160 / 280 / 4 / S	6.40 kg

**Application:** For free running, high-load linear guidance systems.  
 On request, the carriage is also available in different lengths and with varying numbers of rollers. Operate only with a wiper and lubrication system. Optional service pockets for easier maintenance.

**Material:** aluminum, natural anodized

**Technical Data:**

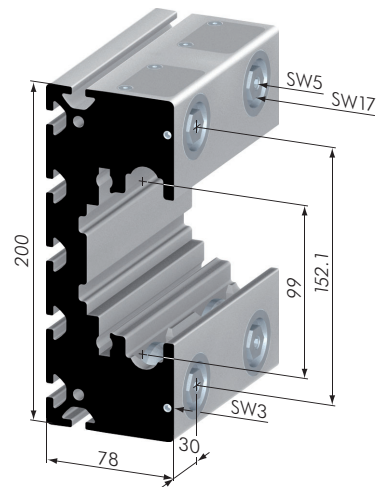
- loadings: dyn. 12500 N per roller in radial direction  
 stat. 6900 N per roller in radial direction  
 stat. 1300 N per roller in axial direction
- operational speed: 8 m/s
- excentric adjustment: ± 0.9 mm
- minimum stroke length: 60 mm



### Carriage 16 / 200

Part No	Description	Weight
SL0081N	Carriage 16 / 200 / 60 / 2 / S	1.52 kg
SL0083N	Carriage 16 / 200 / 140 / 4 / S	3.64 kg
SL0087N	Carriage 16 / 200 / 200 / 4 / S	5.10 kg
SL0085N	Carriage 16 / 200 / 280 / 4 / S	7.10 kg

40



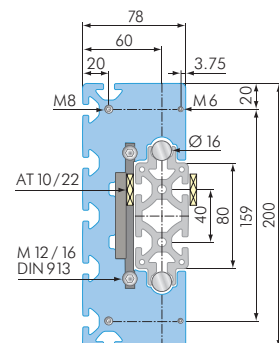
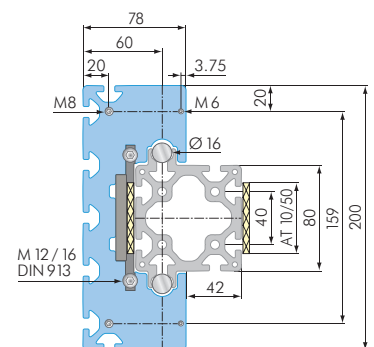
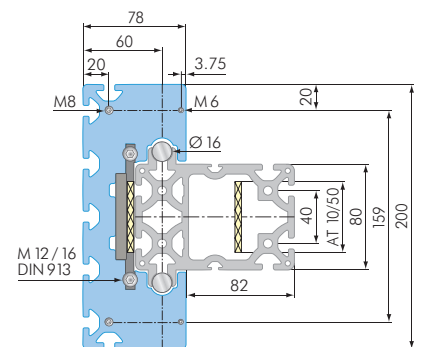
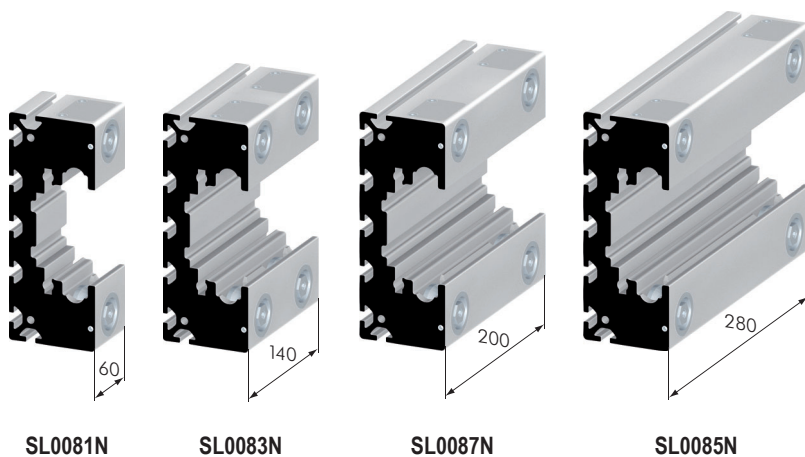
**Application:** For free running, high-load linear guidance systems.

On request, the carriage is also available in different lengths and with varying numbers of rollers. Operate only with a wiper and lubrication system. Optional service pockets for easier maintenance.

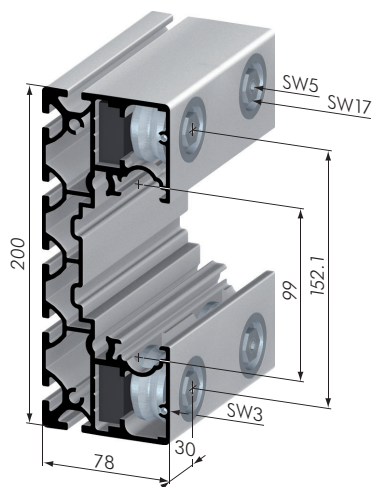
**Material:** aluminum, natural anodized

### Technical Data:

- loadings: dyn. 12500 N per roller in radial direction  
stat. 6900 N per roller in radial direction  
stat. 1300 N per roller in axial direction
- operational speed: 8 m/s
- excentric adjustment:  $\pm 0.9$  mm
- minimum stroke length: 60 mm



**40**



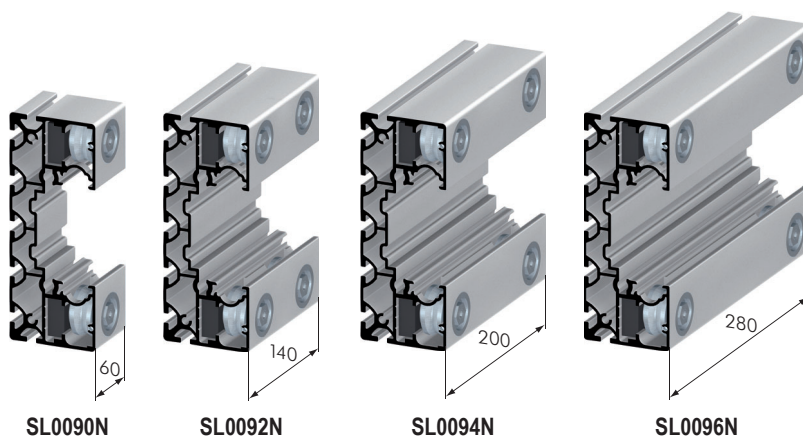
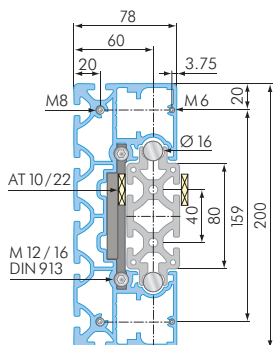
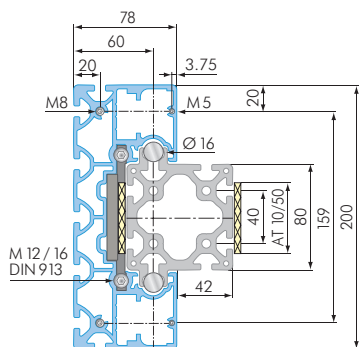
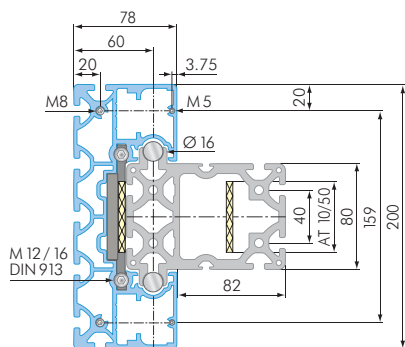
Carriage 16 / 200 sl		
Part No	Description	Weight
SL0090N	Carriage 16 / 200 / 60 / 2 sl	0.51 kg
SL0092N	Carriage 16 / 200 / 140 / 2 sl	1.21 kg
SL0094N	Carriage 16 / 200 / 200 / 4 sl	1.75 kg
SL0096N	Carriage 16 / 200 / 280 / 4 sl	2.49 kg

**Application:** For free running, high-load linear guidance systems.  
 On request, the carriage is also available in different lengths and with varying numbers of rollers.  
 Operate only with a wiper and lubrication system.

**Material:** aluminum, natural anodized

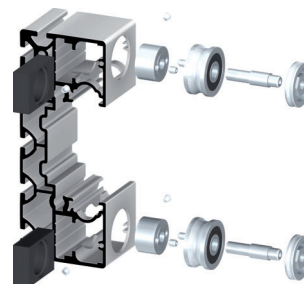
**Technical Data:**

- loadings: dyn. 12500 N per roller in radial direction  
 stat. 6900 N per roller in radial direction  
 stat. 1300 N per roller in axial direction
- operational speed: 8 m/s
- excentric adjustment: ± 0.9 mm
- minimum stroke length: 60 mm



**Special Features of Carriage 16/200 superlight:**

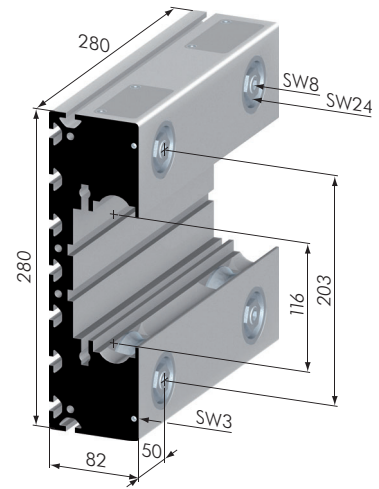
The rollers are fixed into position by a steel plate and reducer bushing, as shown in the illustration to the right. The bushing is held in position by two grub screws and the roller is then assembled with the bearing axle.





Carriage 25		
Part No	Description	Weight
SL0050N	Carriage 25 / 280 / 280 / 2 / S	19.0 kg
SL0051N	Carriage 25 / 320 / 320 / 2 / S	21.0 kg
SL0053N	Carriage 25 / 360 / 360 / 4 / S	23.0 kg

40



SL0050N

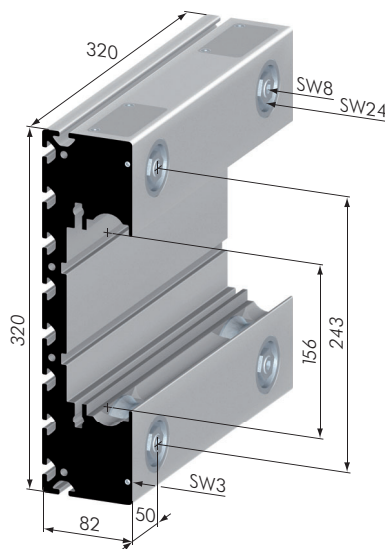
**Application:** For free running, high-load linear guidance systems.  
On request, the carriage is also available in different lengths and with varying numbers of rollers.  
Operate only with a wiper and lubrication system.

**Material:** aluminum, natural anodized

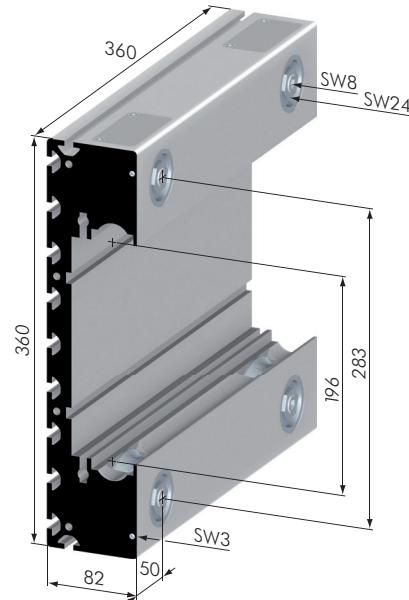
**Technical Data:**

- loadings: dyn. 29200 N per roller in radial direction  
stat. 16400 N per roller in radial direction  
stat. 12250 N per roller in axial direction

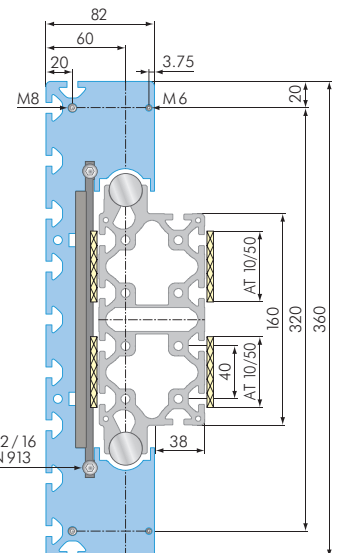
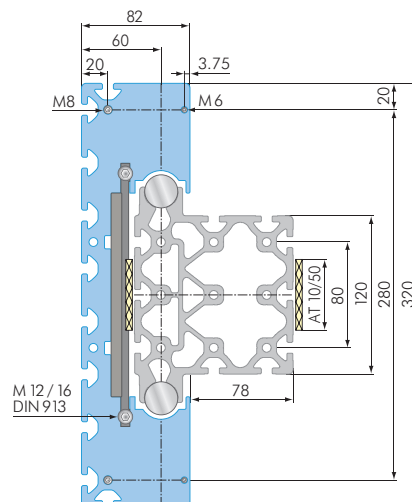
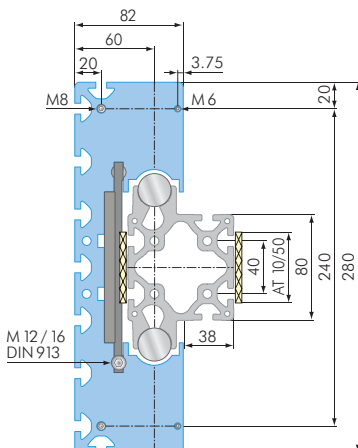
- operational speed: 8 m/s
- excentric adjustment: ± 0.9 mm
- minimum stroke length: 280 mm



SL0051N

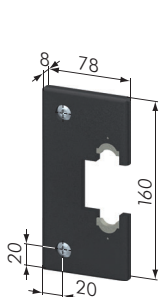


SL0053N

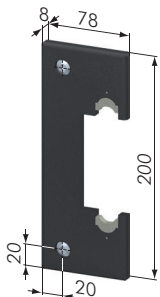


**40**

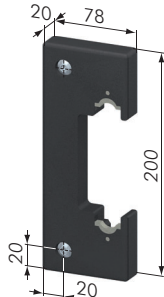
Wiper And Lubrication Systems		
Part No	Description	Weight
SL0162S	Wiper and lubrication system 160	111 g
SL0164S	Wiper and lubrication system 200	131 g
SL0165S	Wiper and lubrication system 200 E	385 g
SL0166S	Wiper and lubrication system 16 S	13 g
SL0167S	Wiper and lubrication system 280	
SL0168S	Wiper and lubrication system 320	268 g
SL0169S	Wiper and lubrication system 360	



**SL0162S**



**SL0164S**



**SL0165S**

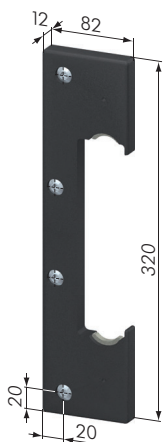
for external lubrication

**Application:** SL0165S: End cover with felt lubrication pad for linear actuators. Two pairs are required for each carriage.

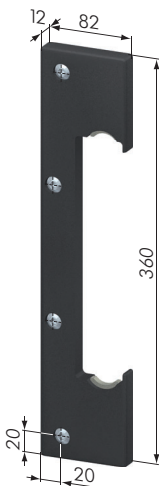
**Material:** aluminum, black anodized



**SL0167S**



**SL0168S**



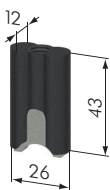
**SL0169S**

**Application:** SL0166S: Wiper and lubrication system for long carriages. The system is situated in a pocket of the carriage to protect the center rollers.

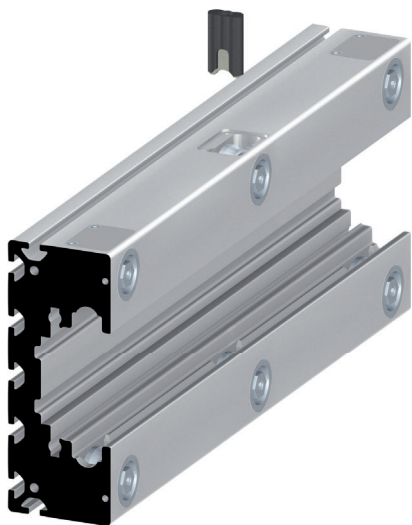
**Material:** PA 6, black

**Supply:** • 2x/4x cap head screw M 8 x 10 or M 8 x 16, DIN 7380, zinc-plated

**Accessories:** • lubrication lub MK5900020 for SL0162S, SL0164S and SL0165S  
 • lubrication lub MK5900022 for SL0166S  
 • lubrication lub MK5900024 for SL0167S, SL0168S and SL0169S  
 • shaft oil SZ6003V



**SL0166S**



## Timing Belt Tensioners

Part No	Description	Weight
SL0174N	Timing Belt Tensioner AT 10/22	125 g
SL0175N	Timing Belt Tensioner AT 10/50	250 g
SL0230N	Timing Belt Tensioner 25/280 AT 10/50	
SL0232N	Timing Belt Tensioner 25/360 AT 10/50	
SL0234N	Timing Belt Tensioner 25/320 AT 10/75	350 g

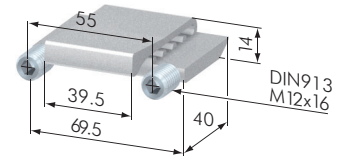
40



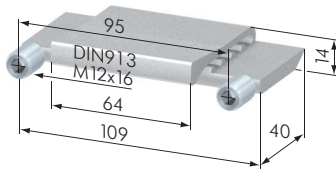
**Application:** Standard timing belt tensioner for timing belts AT 10/22 (for carriages 160), AT 10/50 (for carriages 200, 280, 360) and AT 10/75 (for carriages .../320).

**Material:** aluminum, natural anodized

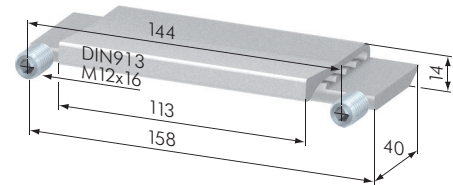
**Supply:** • 2x grub screw M 12 x 16, DIN 913



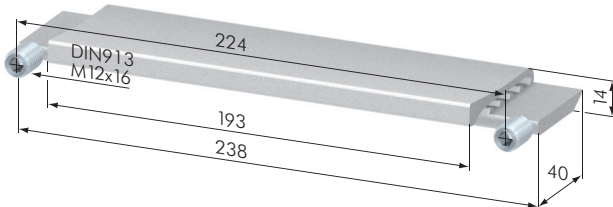
SL0174N



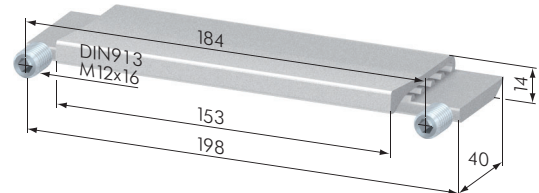
SL0175N



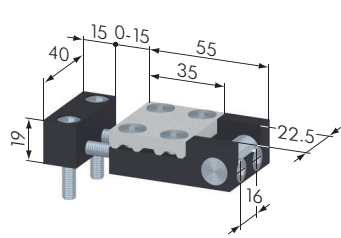
SL0230N



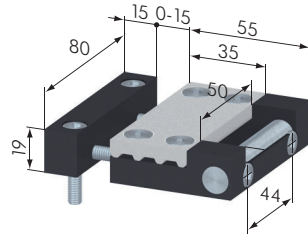
SL0232N



SL0234N



SL0190S



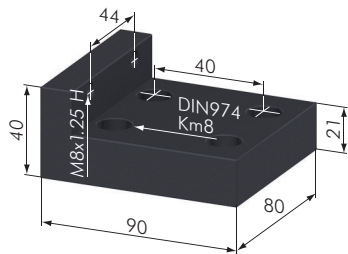
SL0191S

Timing Belt Tensioners, external		
Part N°	Description	Weight
SL0190S	Timing Belt Tensioner 22, external	293 g
SL0191S	Timing Belt Tensioner 50, external	603 g

**Application:** For external tensioning of timing belts.

**Material:** steel, black

**Supply:** Complete as illustrated for the timing belt AT 10/22 and AT 10/50.

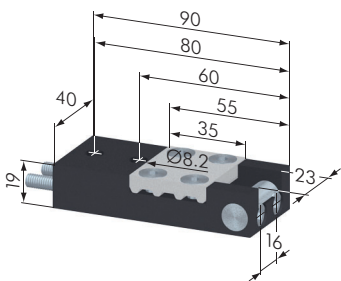


SL0209S

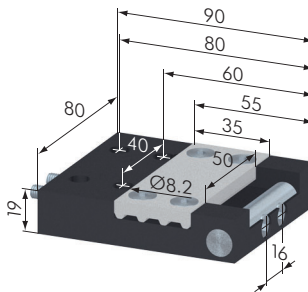
Tensioning Plate Telescope Axis		
Part N°	Description	Weight
SL0209S	Tensioning Plate Telescope Axis	

**Application:** For tensioning of timing belt AT 10/50 via timing belt tensioner 50 external at the end of the profile.

**Material:** steel, black



SL0198S



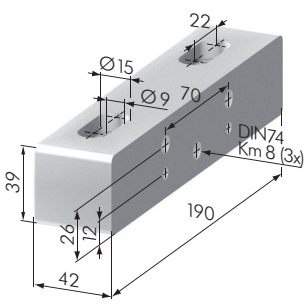
SL0199S

Timing Belt Tensioner, external ZB		
Part N°	Description	Weight
SL0198S	Timing Belt Tensioner 22, external ZB	285 g
SL0199S	Timing Belt Tensioner 50, external ZB	771 g

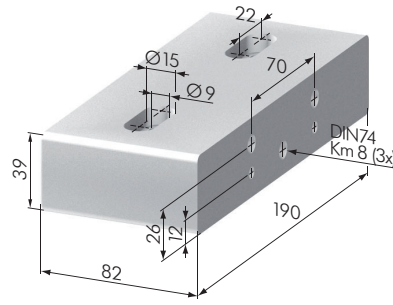
**Application:** For external tensioning of timing belts.

**Material:** steel, black

**Supply:** Complete as illustrated for the timing belt AT 10/22 and AT 10/50.



SL0195N



SL0196N

Fixing Blocks		
Part N°	Description	Weight
SL0195N	Fixing Block 22	785 g
SL0196N	Fixing Block 50	1546 g

**Application:** For attaching external tensioners to the carriage.

**Material:** aluminum, natural anodized

**Supply:** No screws, fixing block only.

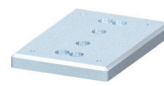
## Attachment Plates Tensioner

Part No	Description	Weight
SL0208S	Attachment Plate Tensioner 40/80	1.85 kg
SL0200S	Attachment Plate Tensioner 80/80	2.63 kg
SL0202S	Attachment Plate Tensioner 80/120	3.35 kg
SL0204S	Attachment Plate Tensioner 80/160	4.02 kg
SL0206S	Attachment Plate Tensioner 80/200	4.70 kg
SL0290S	Attachment Plate Tensioner C 80/100	

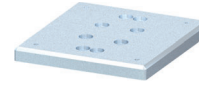
**Application:** For attaching of the external tensioners 22 ZB and 50 ZB respectively to the end of the track profile.

**Material:** steel, zinc-plated

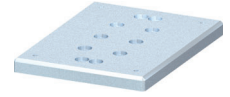
40



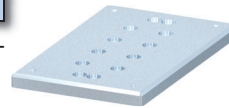
SL0208S



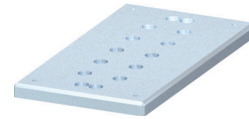
SL0200S



SL0202S



SL0204S



SL0206S



SL0290S

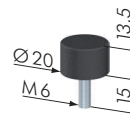
## End Stops

Part No	Description	Weight
SL8604S	End Stop 20/13.5 M6	11 g
SL8600S	End Stop 21/24 M6	34 g
SL8601S	End Stop 32/36 M8	109 g
SL8602S	End Stop 52/58 M10	331 g
SL8603S	End Stop 75/89 M12	

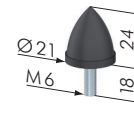
**Application:** For absorbing impact at the end of stroke positions.

**Material:** rubber, black

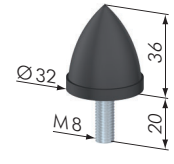
40



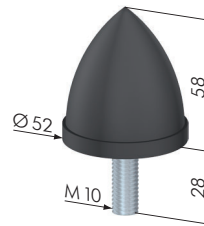
SL8604S



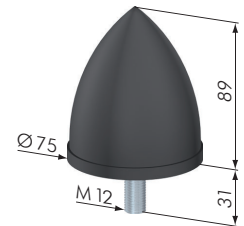
SL8600S



SL8601S



SL8602S



SL8603S

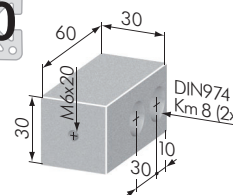
## Fixing Blocks For End Stops

Part No	Description	Weight
SZ1530N	Fixing Block For End Stops M6	132 g
SZ1531N	Fixing Block For End Stops M8	331 g

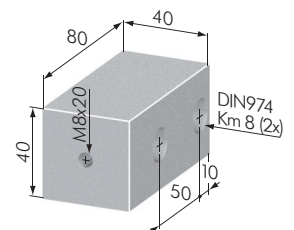
**Application:** For attaching end stops.

**Material:** aluminum, natural anodized

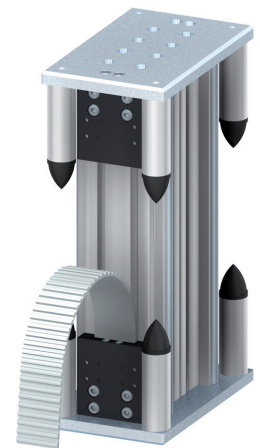
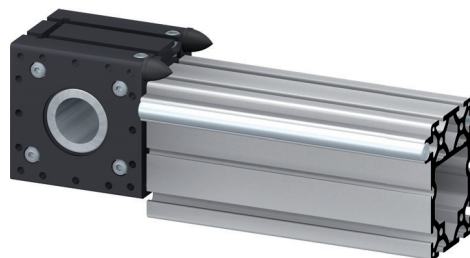
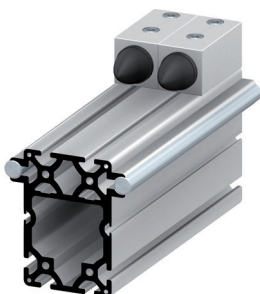
40



SZ1530N



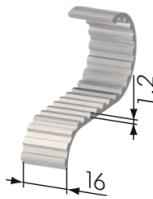
SZ1531N



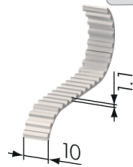
40



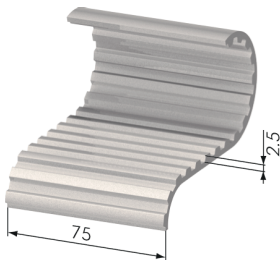
SL8500



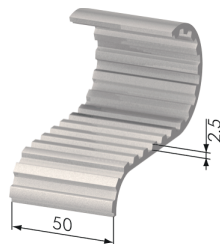
SL8560



SL8550



SL8520



SL8510

Timing Belts		
Part No	Description	Weight
SL8550	Timing Belt AT 3 / 10	22 g/m
SL8560	Timing Belt AT 5 / 16	57 g/m
SL8500	Timing Belt AT 10 / 22	250 g/m
SL8510	Timing Belt AT 10 / 50	308 g/m
SL8520	Timing Belt AT 10 / 75	563 g/m

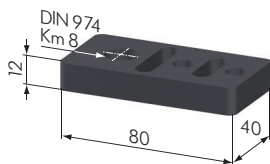
- Application:**
- AT 3 / 10 for pulley assembly C-40 / 57
  - AT 5 / 16 for pulley assembly C-40 / 100
  - AT 10 / 22 for pulley assemblies 40 / 40, 40 / 80, C-80 / 100
  - AT 10 / 50 for pulley assemblies 80 / 80, 80 / 100, 80 / 120, 120 / 120 – 50
  - AT 10 / 75 for pulley assembly 120 / 120 – 75

**Material:** abrasion resistant polyurethane with steel cording

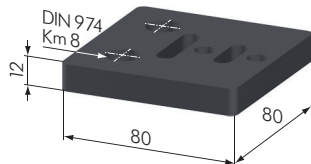
**Technical Data:** operating temperature max. 80° C (176° F)

Timing Belt	Tensile Strength	Elongation
AT 3 / 10	410 N	0.1% with 102 N
AT 5 / 16	1260 N	0.1% with 315 N
AT 10 / 22	3200 N	0.1% with 800 N
AT 10 / 50	8050 N	0.1% with 2012 N
AT 10 / 75	12220 N	0.1% with 3055 N

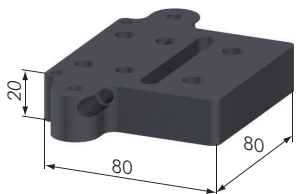
40



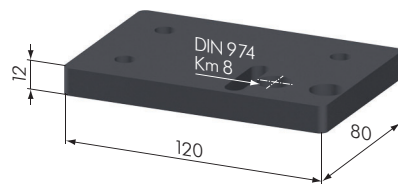
SL0250S



SL0255S



SL0257S



SL0260S

Adapter Plates		
Part No	Description	Weight
SL0250S	Adapter Plate 40 x 80	75 g
SL0255S	Adapter Plate 80 x 80	176 g
SL0257S	Adapter Plate U 80 x 90	
SL0260S	Adapter Plate 80 x 120	

**Application:** To connect pulley assemblies 40 x 40 to the corresponding track profiles.

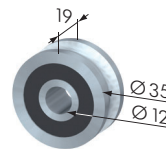
**Material:** aluminum, black anodized

### Rollers, Roller Axles 16

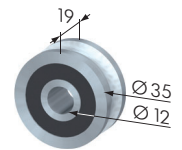
Part No	Description	Weight
SL0155G	Roller 16	125 g
SL0155N	Roller 16, corrosion-resistant	125 g
SL0152S	Roller Axle 16, concentric	78 g
SL0153S	Roller Axle 16, excentric	77 g

**Application:** For free running linear actuator systems in conjunction with a guidance rail  $\varnothing 16$ .

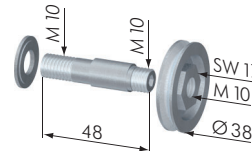
**Material:**  
 SL0155G: steel, hardened and ground  
 SL0155N: stainless-steel, corrosion-resistant  
 SL0152S: stainless-steel  
 SL0153S: stainless-steel



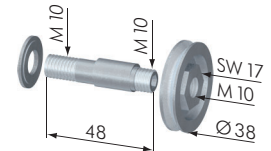
SL0155G



SL0155N



SL0152S



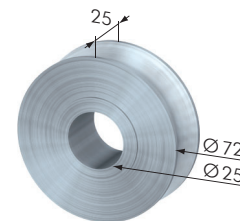
SL0153S

### Rollers, Roller Axles 25

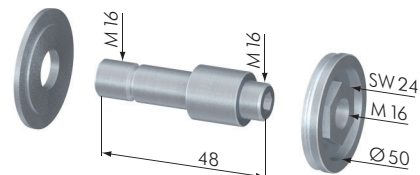
Part No	Description	Weight
SL0157G	Roller 25	409 g
SL0154Z	Roller Axle 25, concentric	284 g
SL0154E	Roller Axle 25, excentric	284 g

**Application:** For free running linear actuator systems in conjunction with a guidance rail  $\varnothing 25$ .

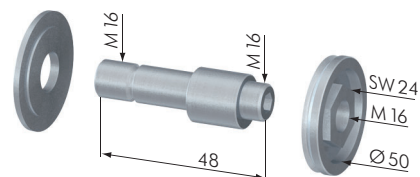
**Material:**  
 SL0157G: steel, hardened and ground  
 SL0154Z: stainless-steel  
 SL0154E: stainless-steel



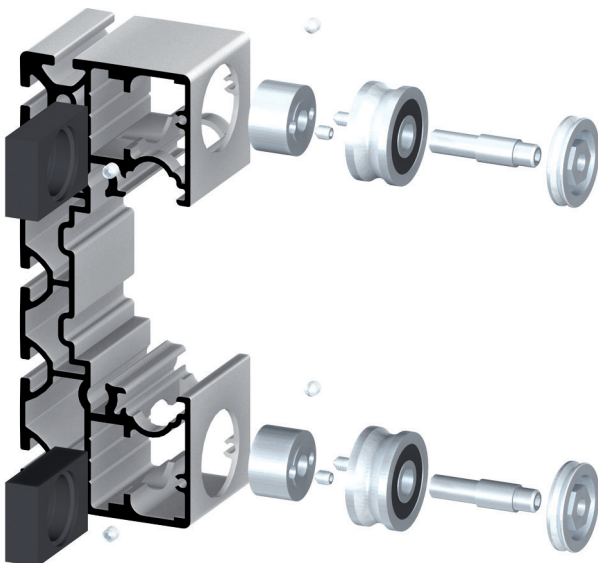
SL0157G

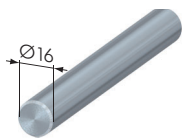


SL0154Z

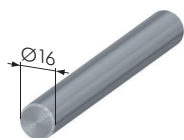


SL0154E

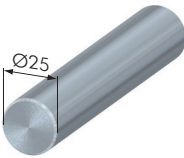




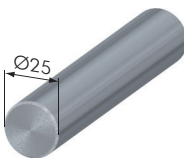
SL0184G



SL0185G



SL0188G



SL0189G



**Guidance Rails**

Part No	Description	Weight
SL0184G	Ø 16 mm	1.58 kg/m
SL0184G3000	Ø 16 mm, L = 3000 mm	4.74 kg
SL0185G	Ø 16 mm, corrosion-resistant	1.58 kg/m
SL0185G3000	Ø 16 mm, SS, L = 3000 mm	4.75 kg
SL0188G	Ø 25 mm	3.85 kg/m
SL0188G3000	Ø 25 mm, L = 3000 mm	11.55 kg
SL0189G	Ø 25 mm, corrosion-resistant	3.86 kg/m
SL0189G3000	Ø 25 mm, L = 3000 mm, corr.-res.	11.57 kg
SB1500	Doweling Of Guidance Rail	

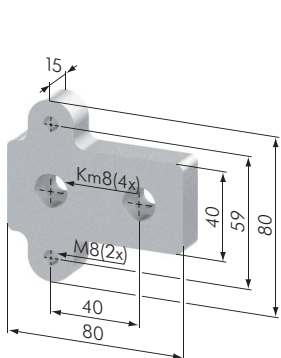
**Application:** Guidance rail for rollers Ø 16 and Ø 25.

**Material:** guidance rail Ø 16 h6 / Ø 25 h6:  
steel, hardened and ground

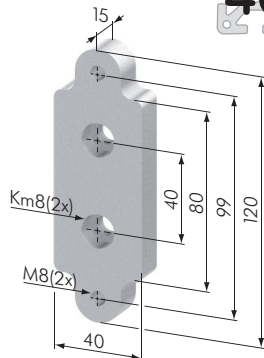
**Technical Data:** min. hardness depth: 1.6 mm  
HRc: 62 ± 2 mm  
RZ: 1.6 µm



SB1500



SL0211N



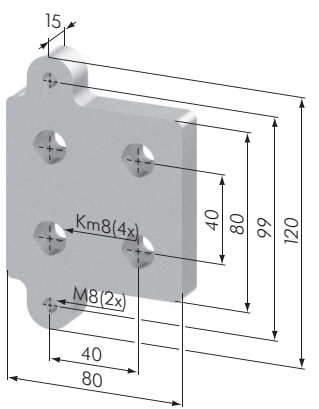
SL0212N

**Rail Stop Plates For Guidance Rails Ø 16**

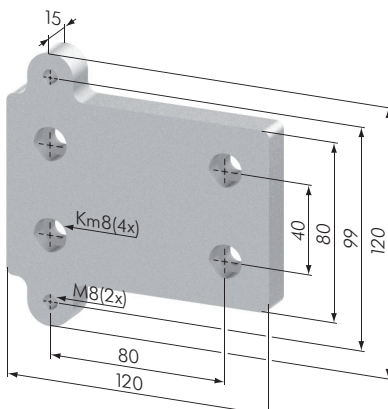
Part No	Description	Weight
SL0210N	Rail Stop Plate 16 40 x 40	70 g
SL0211N	Rail Stop Plate 16 40 x 80 / 40	83 g
SL0212N	Rail Stop Plate 16 40 x 80 / 40	144 g
SL0213N	Rail Stop Plate 16 80 x 80	214 g
SL0214N	Rail Stop Plate 16 80 x 120	294 g

**Application:** End fixing of guidance rail.

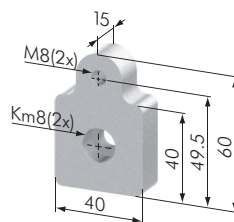
**Material:** aluminum, natural anodized



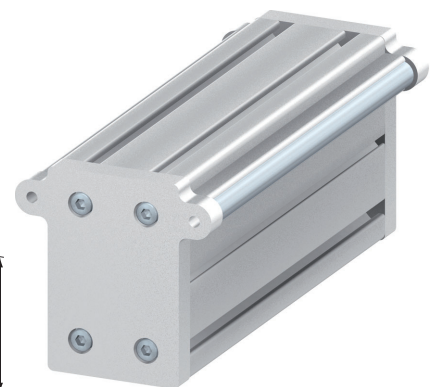
SL0213N



SL0214N



SL0210N



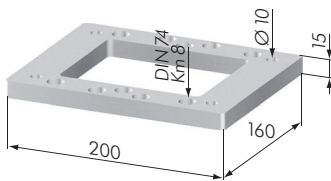


Carriage Joining Plates		
Part No	Description	Weight
SL0512N	Carriage Joining Plate 200 x 200	780 g
SL0514N	Carriage Joining Plate 240 x 200	890 g
SL0516N	Carriage Joining Plate 280 x 200	1000 g
SL0510N	Carriage Joining Plate 160 x 200	700 g
SL0502N	Carriage Joining Plate 356 x 200	2300 g

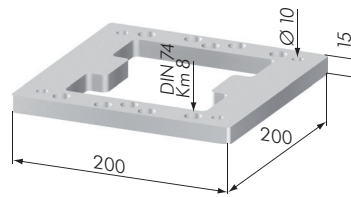


**Application:** For a strong connection of two carriages.

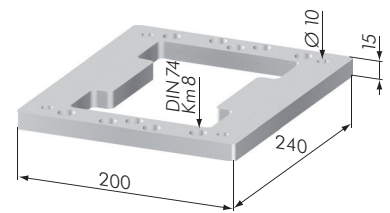
**Material:** aluminum, natural anodized



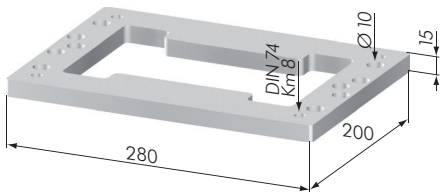
SL0510N



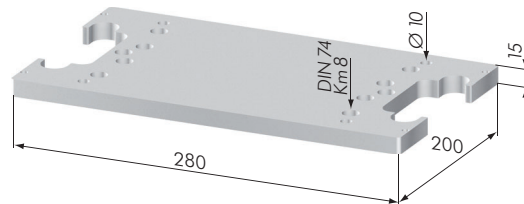
SL0512N



SL0514N



SL0516N



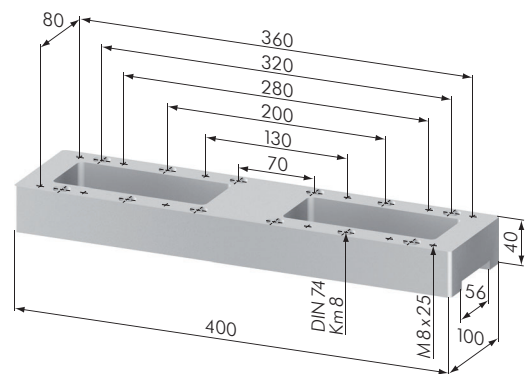
SL0502N

Attachment Plate TSA		
Part No	Description	Weight
SL0550N	Attachment Plate Plate 400 x 100, for TSA	



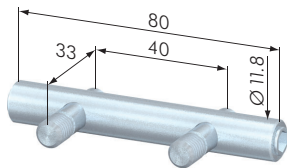
**Application:** Joining plate for Omega drive 50 for assembling of the drive unit of telescope axis SL5400N.

**Material:** aluminum, natural anodized

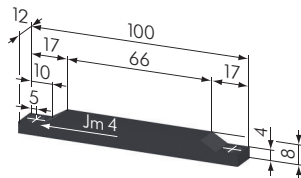
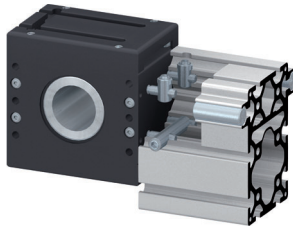


SL0550N

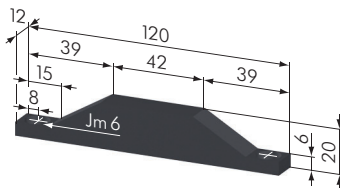
**G** Linear Motion System Accessories  
**26** Special Fastener, Limit Switch Cams, End Of Stroke Set



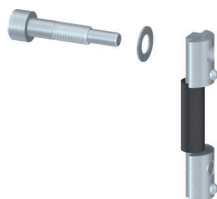
**SV3100V**



**SL1500S**



**SL1502S**



### Special Fastener 120

Part N°	Description	Weight
SV3100V	Special Fastener 120	67 g

**Application:** To affix pulley assembly only to track profile 80 x 120.

**Material:** steel, zinc-plated



### Limit Switch Cams

Part N°	Description	Weight
SL1500S	Limit Switch Cam 100	60 g
SL1502S	Limit Switch Cam 120	145 g

**Application:** Cams for mechanical limit switches.

**Material:** steel, zinc-plated; black



### End Of Stroke Set 8

Part N°	Description	Weight
SL8610V	End Of Stroke Set 8	100 g

**Application:** To absorb impact at the ends of the stroke positions. An M8 cap head screw is screwed into the underside of the carriage, the screw head protrudes into the profile groove. A PUR cord buffer is situated between the t-nuts. The outer t-nut is fixed into position. The inner t-nut moves freely in the profile t-slot. One complete set is required for each position.

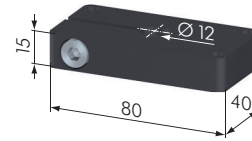
**Material:** stainless-steel, rubber

Clamping Plates		
Part No	Description	Weight
SL0222S	Clamping Plate 40 x 80	322 g
SL0227S	Clamping Plate 80 x 80	624 g

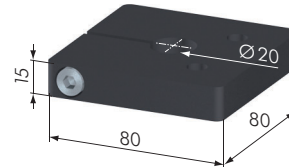
**Application:** For clamping guidance rail  $\varnothing$  12 mm (SL0222S) or guidance rail  $\varnothing$  20 mm (SL0227S).

**Material:** steel, zinc-plated

**Supply:** SL0222S: clamp screw M 8 x 20  
SL0227S: clamp screw M 8 x 30



SL0222S

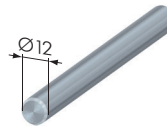


SL0227S

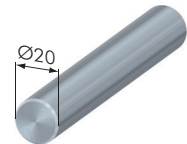
Guidance Rails		
Part No	Description	Weight
SL0181G	$\varnothing$ 10 mm	612 <sup>g</sup> /m
SL0181G3000	$\varnothing$ 10 mm, L = 3000 mm	1.84 kg
SL0182G	$\varnothing$ 12 mm	880 <sup>g</sup> /m
SL0182G3000	$\varnothing$ 12 mm, L = 3000 mm	2.64 kg
SL0186G	$\varnothing$ 20 mm	2.45 <sup>kg</sup> /m
SL0186G3000	$\varnothing$ 20 mm, L = 3000 mm	7.35 kg
SB1008	Cutting Charge For Guidance Rail	

**Application:** For linear guidance systems in conjunction with the linear flange plates 40 x 80 and 80 x 80.

**Material:** steel, hardened and ground



SL0182G



SL0186G

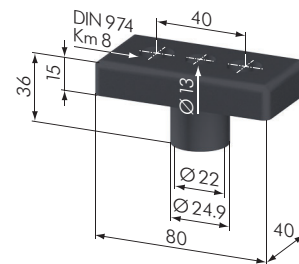
Linear Flange Plates		
Part No	Description	Weight
SL0300S	Linear Flange Plate 40 x 80	130 g
SL0400S	Linear Flange Plate 80 x 80	239 g

**Application:** For building linear guidance systems in conjunction with profile size / guidance rail.  
40 x 80 /  $\varnothing$  12 mm  
80 x 80 /  $\varnothing$  20 mm

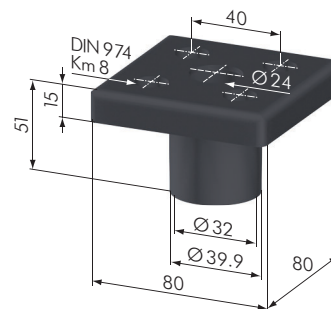
**Material:** steel, hardened and ground

**Supply:** with internal ball bushing: 0670-212-40 for 40 x 80  
0670-220-40 for 80 x 80

Compensates for alignment errors of 30' maximum.



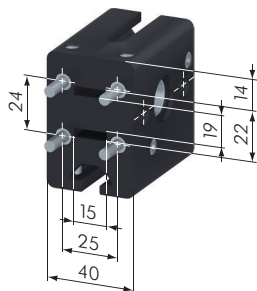
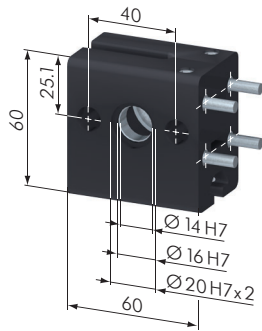
SL0300S



SL0400S



40



SL9800S

Pulley Assembly		
Part No	Description	Weight
SL9800S	Pulley Assembly C 40 / 57	

**Application:** This pulley assembly is used in conjunction with *Paletti* linear components to manufacture linear actuators.

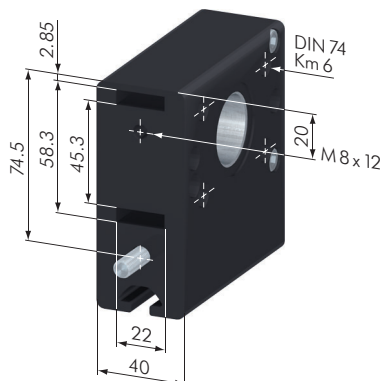
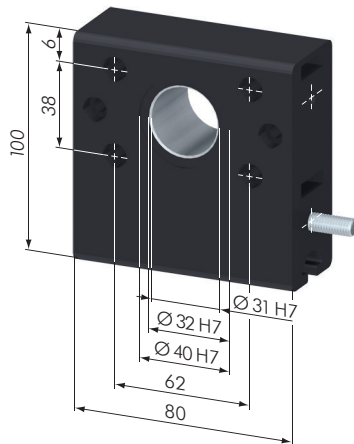
**Material:** casing: aluminum, black anodized

**Technical Data:**

- timing belt AT 3 / 10: maximum loading MD = 5 Nm
- timing belt pulley: aluminum, tooth pitch AT 3  
No of teeth 20
- pitch circle diameter: 19.10 mm
- bearing type: 61902-2Z
- With shrunken fit drive (steel) upon customer request (included in the price).
- max. bore for motor with keyway: Ø 14H7
- timing belt length 180°: 90.0 mm

Connected to profile via four special fasteners type G (SV1071V).  
Motor connection via flange plates per customer request.

40



SL9805S

Pulley Assembly		
Part No	Description	Weight
SL9805S	Pulley Assembly C 40 / 100	

**Application:** This pulley assembly is used in conjunction with *Paletti* linear components to manufacture linear actuators.

**Material:** casing: aluminum, black anodized

**Technical Data:**

- timing belt AT 5 / 16: maximum loading MD = 15 Nm
- timing belt pulley: aluminum, tooth pitch AT 5  
No of teeth 32
- pitch circle diameter: 50.93 mm
- bearing type: 61808-2Z
- With shrunken fit drive (steel) upon customer request (included in the price).
- max. bore for motor with keyway: Ø 18H7
- timing belt length 180°: 180.0 mm

Connected to profile via one central fastener type G (SV1071V) and one cap head screw DIN 912. Motor connection via flange plates per customer request.

Pulley Assembly		
Part No	Description	Weight
SL9810S	Pulley Assembly C 80 / 100	1.56 kg

40

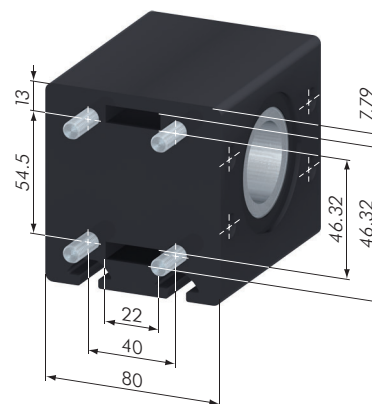
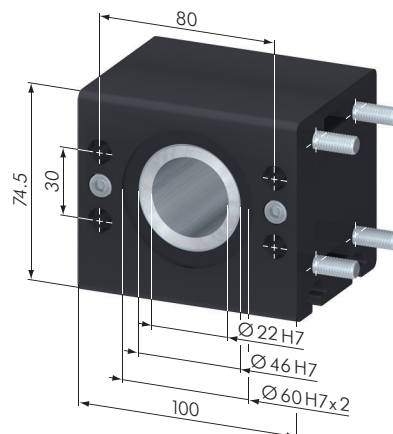
**Application:** This pulley assembly is used in conjunction with *Paletti* linear components to manufacture linear actuators.

**Material:** casing: aluminum, black anodized

**Technical Data:**

- timing belt AT 10/22: maximum loading MD = 70 Nm
- timing belt pulley: aluminum, tooth pitch AT 10  
Ne of teeth 19
- bearing type: 61909-RS
- pitch circle diameter: 60.48 mm
- With shrunken fit drive (steel) upon customer request (included in the price).
- max. bore for motor with keyway:  $\varnothing 22H7$
- timing belt length 180°: 195.0 mm

Connected to profile via four cap head screws DIN 912.  
Motor connection via flange plates per customer request.



SL9810S

Omega Drive		
Part No	Description	Weight
SL9820S	Omega Drive AT 5 / 16	

40

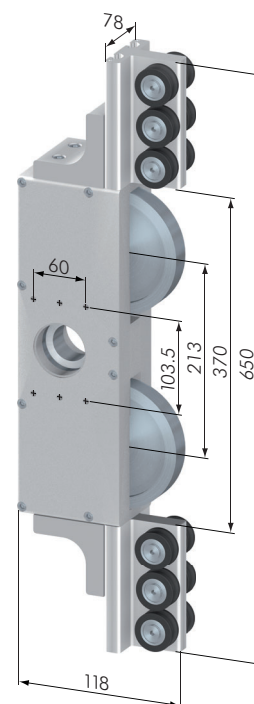
**Application:** This Omega drive is used in conjunction with the *Paletti* C-Track 80 x 100 to manufacture linear actuators.

**Material:** casing: aluminum, black anodized

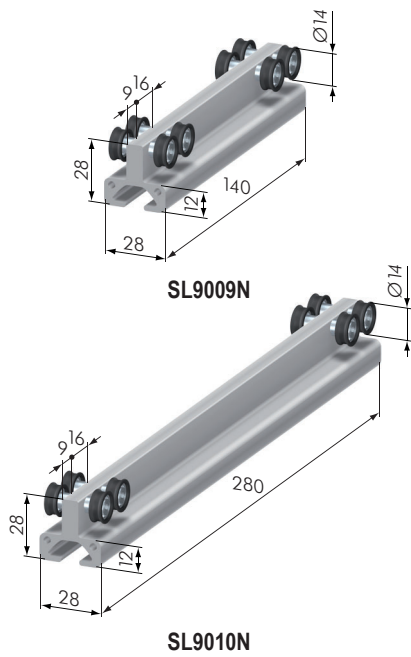
**Technical Data:**

- timing belt AT 5/16: maximum loading MD = 70 Nm
- timing belt pulley: aluminum, tooth pitch AT 5  
Ne of teeth 56
- pitch circle diameter: 89.13 mm
- With shrunken fit drive (steel)
- per customer request (included in the price).
- max. bore for motor with keyway:  $\varnothing 30H7$
- max. bore for motor with taper lock coupling:  $\varnothing 34H7$
- timing belt length 180°: 195.0 mm

Motor connection via flange plates per customer request.



SL9820S



**30**

### Double Carriage C 30 / 43

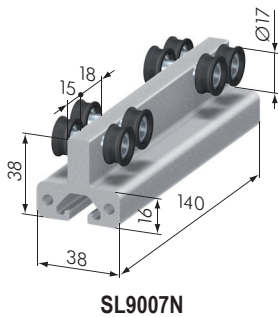
Part No	Description	Weight
SL9009N	Double Carriage 30/43 140/8	
SL9010N	Double Carriage 30/43 280/8	

**Application:** For creating sliding doors and other linear applications.

**Material:** profile: aluminum, natural anodized  
roller: POM

#### Technical Data:

The carriage rollers have no excentric adjustment. The rollers are preset to suit the internal guidance form of the track profile.



**40**

### Double Carriage C 40 / 57

Part No	Description	Weight
SL9007N	Double Carriage 40/57 140/8	
SL9008N	Double Carriage 40/57 280/8	

**Application:** For creating sliding doors and other linear applications.

**Material:** profile: aluminum, natural anodized  
roller: POM

#### Technical Data:

The carriage rollers have no excentric adjustment. The rollers are preset to suit the internal guidance form of the track profile.

## Single Carriage C 40 / 100

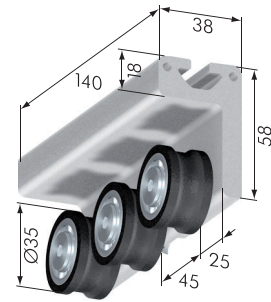
Part No	Description	Weight
SL9005N	Single Carriage 40 / 100 140 / 3 pressure version	
SL9006N	Single Carriage 40 / 100 280 / 4 pressure version	
SL9011N	Single Carriage 40 / 100 140 / 3, pull version	
SL9012N	Single Carriage 40 / 100 280 / 4, pull version	

**Application:** For creating sliding doors and other linear applications.

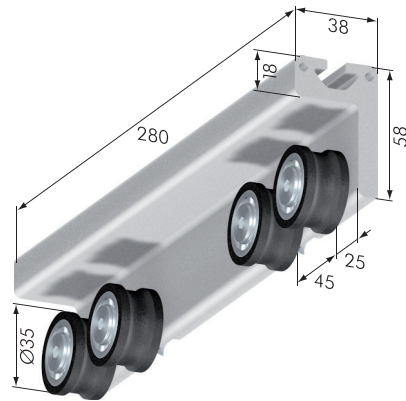
**Material:** profile: aluminum, natural anodized  
roller: POM

**Technical Data:**

- excentric adjustment:  $\pm 0.9$  mm



SL9005N



SL9006N

## Single / Double Carriage C 80 / 100

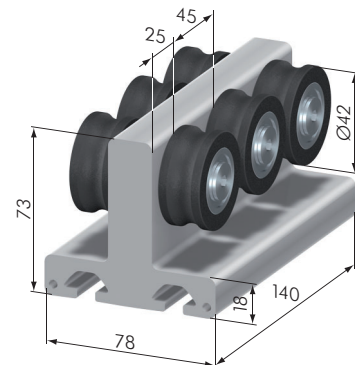
Part No	Description	Weight
SL9000N	Double Carriage C 80 / 100 140 / 6	625 g
SL9001N	Double Carriage C 80 / 100 280 / 8	1000 g
SL9002N	Single Carriage C 80 / 100 140 / 3	508 g
SL9003N	Single Carriage C 80 / 100 280 / 4	348 g

**Application:** For creating sliding doors and other linear applications.

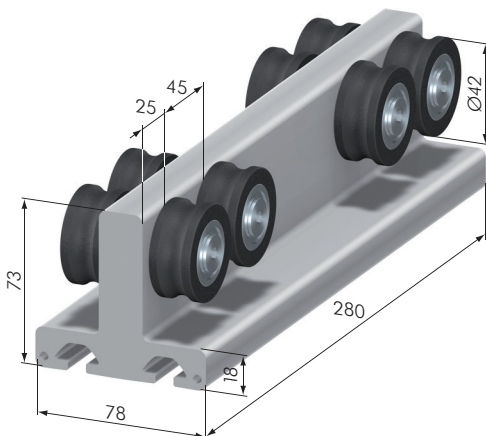
**Material:** profile: aluminum, natural anodized  
roller: POM

**Technical Data:**

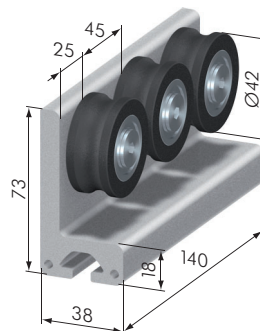
- excentric adjustment:  $\pm 0.9$  mm



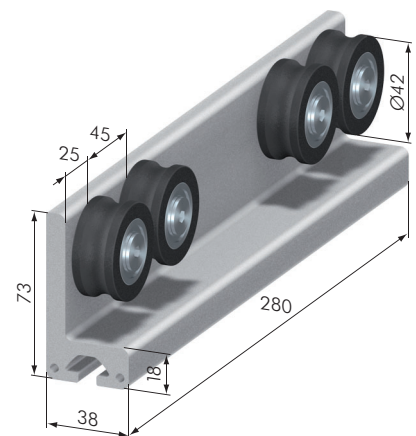
SL9000N



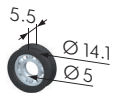
SL9001N



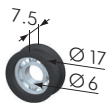
SL9002N



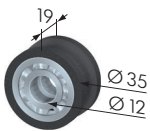
SL9003N



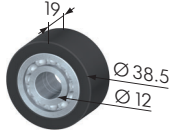
**SL0161S**



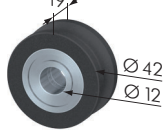
**SL0160S**



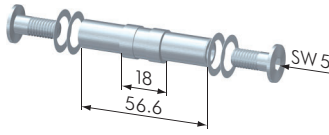
**SL0159S**



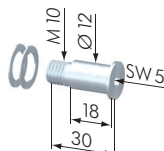
**SL0156S**



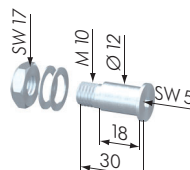
**SL0158S**



**SL0150E**



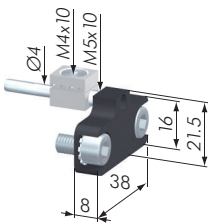
**SL0150Z**



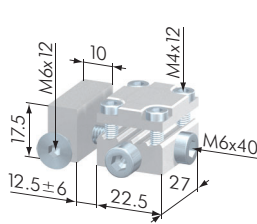
**SL0151E**

Rollers / Roller Axles		
Part No	Description	Weight
SL0161S	Roller C 30 / 43 POM	
SL0160S	Roller C 40 / 57 POM	
SL0159S	Roller C 40 / 100 POM	
SL0156S	Roller C 80 / 100 POM, straight	
SL0158S	Roller C 80 / 100 POM	
SL0150E	Roller Axle Double C-Carriage 80 E	
SL0150Z	Roller Axle C-Carriage 80 Z	
SL0151E	Roller Axle Single C-Carriage E	

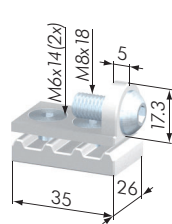
**Application:** Rollers used when constructing custom C-carriages. The roller C 80/100 POM, straight, can be used in conjunction with the roller C 80/100 POM in order to withstand higher loads. The concentric roller axle is used for both single and double sided C-carriages.



**SL0240N**



**SL0241N**



**SL0242N**

Timing Belt Tensioners		
Part No	Description	Weight
SL0240N	Timing Belt Tensioner C 40 / 57	
SL0241N	Timing Belt Tensioner C 40 / 100	
SL0242N	Timing Belt Tensioner C 80 / 100	

**Application:** For attaching and tensioning of the timing belt to the C-carriages. Manufactures free running and long-living linear actuator systems, that do not need any lubrication of the roller guidance.



Pulley Assembly 80 / 90		
Part No	Description	Weight
SL9850S	Pulley Assembly 80 / 90	

40

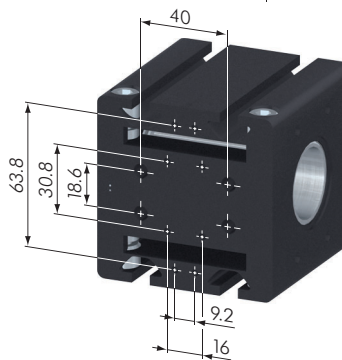
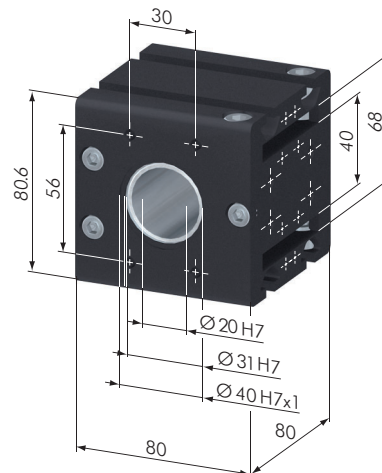
**Application:** This pulley assembly is used in conjunction with Paletti linear components to manufacture linear actuators.

**Material:** casing: aluminum, black anodized

**Technical Data:**

- timing belt AT 10 / 50: maximum loading MD = 60 Nm
- timing belt pulley: aluminum, tooth pitch AT 10  
 Ne of teeth 15
- pitch circle diameter: 47.75 mm
- bearing type: 619079-2RSR
- With shrunk fit drive (steel) on customer request (included in the price).
- max. bore for motor with keyway:  $\varnothing 30H7$
- max. bore for motor with taper lock coupling:  $\varnothing 34H7$
- timing belt length 180°: 151.0 mm

Connected to profile via four special central fasteners type G, four grub screws M 4 x 30 and two T-nuts M 5 mini (SV2193V). Motor connection via flange plates per customer request.



SL9850S

Carriage 80 / 90		
Part No	Description	Weight
SL8310N	Carriage 80 / 90 160 / 8	1,15 kg
SL8320N	Carriage 80 / 90 200 / 10	
SL8330N	Carriage 80 / 90 280 / 10	

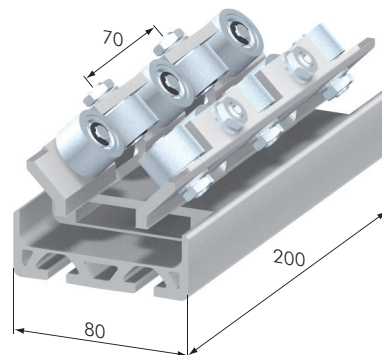
40

**Application:** For free running, high-load linear guidance systems. Upon request, the carriage is also available in different lengths and with varying numbers of rollers.

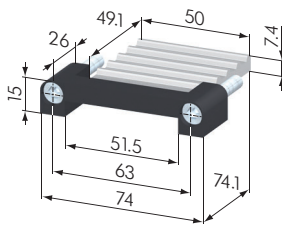
**Material:** carriage: aluminum, natural anodized  
 timing belt tensioner: aluminum, natural anodized  
 roller axles, bearings: stainless-steel  
 roller shell: plastic

**Technical Data:**

- operational speed: 8 m/s
- maintenance-free



SL8320N



SL0180S

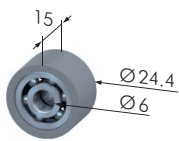


**Timing Belt Tensioner 80 / 90**

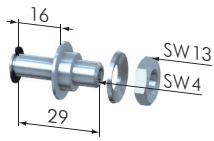
Part No	Description	Weight
SL0180S	Timing Belt Tensioner 80 / 90	101 g

**Application:** For attaching and tensioning of the timing belt to the carriage 80 / 90.

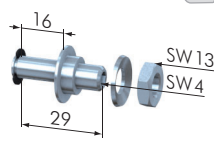
**Material:** timing belt tensioner: steel, black  
 clamping plate: aluminum, natural anodized



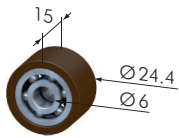
SL0130S



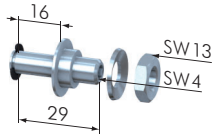
SL0110V



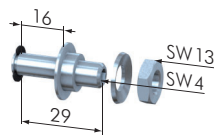
SL0120V



SL0135V



SL0115V



SL0125V

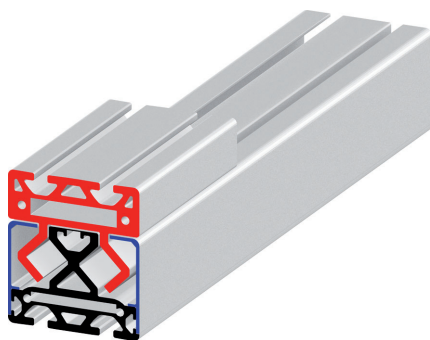


**Roller / Roller Axle 80 / 90**

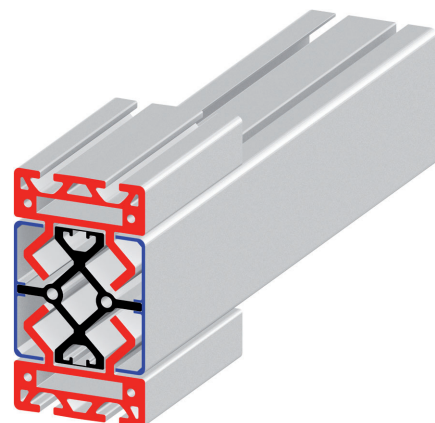
Part No	Description	Weight
SL0130S	Roller F 80 / 90	18.4 g
SL0110V	Roller Axle 80 / 90, concentric	16.8 g
SL0120V	Roller Axle 80 / 90, excentric	16.8 g
SL0135V	Roller F 80 / 90 VU	
SL0115V	Roller Axle 80 / 90 VU, concentric	16.8 g
SL0125V	Roller Axle 80 / 90 VU, excentric	16.8 g

**Application:** Rollers and roller axles for the assembly of free running and resilient single and double guidances, that do not need any lubrication of the roller guidance.

**Material:** roller shell: plastic or Vulkollan (rubber)  
 roller axles: stainless-steel



single guidance 80 / 90



double guidance 80 / 90

Carriage 120		
Part No	Description	Weight
SL8340N	Carriage 120, steel rollers	
SL8345N	Carriage 120, plastic rollers	

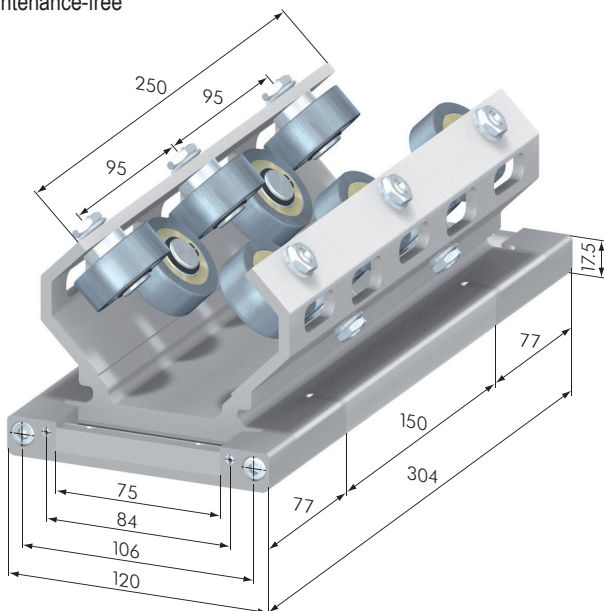
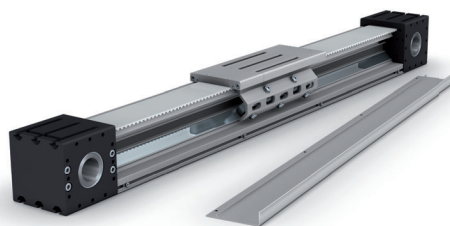
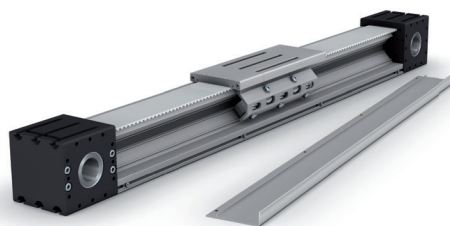
40

**Application:** For free running, high-load linear guidance systems. Upon request, the carriage is also available in different lengths and with varying numbers of rollers.

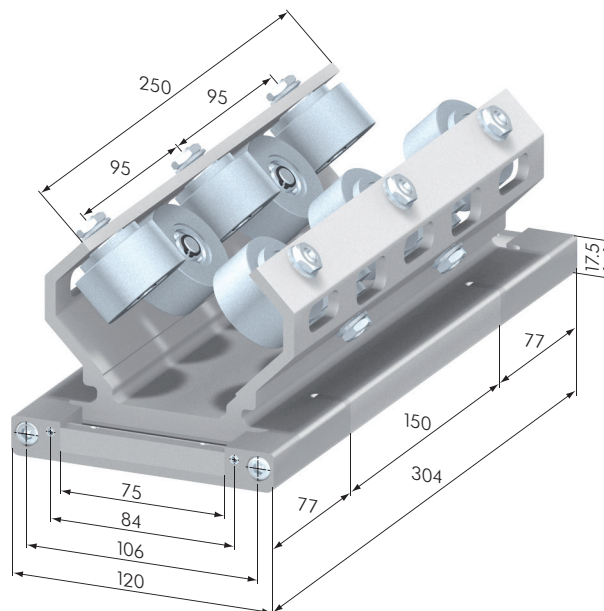
**Material:** carriage: aluminum, natural anodized  
 timing belt tensioner: aluminum, natural anodized  
 roller axles, bearings: steel, zinc-plated  
 roller shell: steel, zinc-plated (SL8340N)  
 plastic (SL8345N)

**Technical Data:**

- operational speed: 8 m/s
- maintenance-free



SL8340N



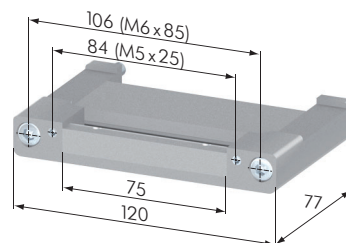
SL8345N

Timing Belt Tensioner 120 x 120 45°		
Part No	Description	Weight
SL0185S	Timing Belt Tensioner 120 x 120 45°	

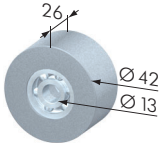
40

**Application:** For attaching and tensioning of the timing belt AT 10 / 75 to the carriage 120 to manufacture free running and long-living linear actuator systems, that do not need any lubrication of the roller guidance.

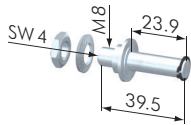
**Material:** aluminum, natural anodized



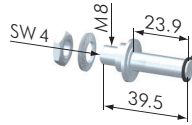
SL0185S



SL0140S



SL0132V

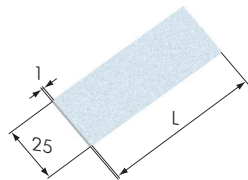


SL0133V

Roller / Roller Axles 100 / 120		
Part No	Description	Weight
SL0140S	Roller 100 / 120	
SL0133V	Roller Axle 100 / 120, concentric	
SL0132V	Roller Axle 100 / 120, excentric	

**Application:** Rollers and roller axles for the assembly of free running and resilient linear actuators, that do not need any lubrication of the roller guidance.

**Material:** roller shell: plastic  
roller axles: stainless-stell

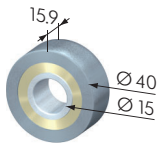


SL0187G

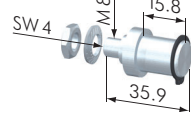
Steel Strap		
Part No	Description	Weight
SL0187G	Steel Strap	
SL0187G3000	Steel Strap, L = 3000 mm	

**Application:** Roller guide of linear actuator 120 x 120 AT 10 / 75 with steel rollers.

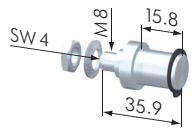
**Material:** cold-rolled steel strap



SL0141G



SL0130V



SL0131V

Roller / Roller Axles 100 / 120 Steel		
Part No	Description	Weight
SL0141G	Roller 100 / 120 Steel	
SL0130V	Roller Axle 100 / 120 Steel, concentric	
SL0131V	Roller Axle 100 / 120 Steel, excentric	

**Application:** Rollers and roller axles for the assembly of free running and resilient linear actuators, that do not need any lubrication of the roller guidance.

**Material:** roller shell: stainless-steel  
roller axles: stainless-steel

