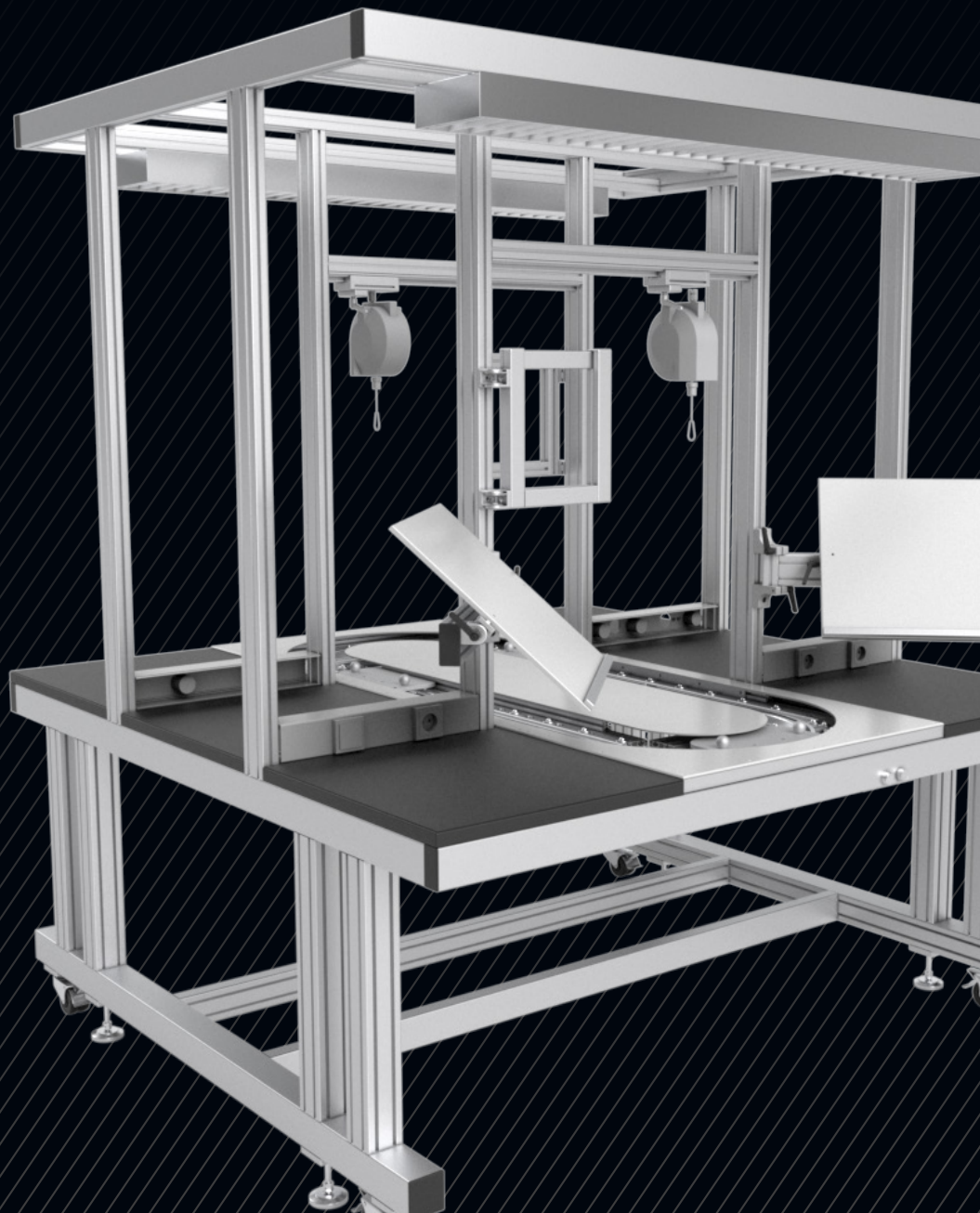


PALETTI

PRECISE, LONG-LASTING, INDIVIDUALLY

ASSEMBLY AND WORK TABLES



www.paletti-group.com



Desk With Monitor Support

- made from curved and table profiles with inlaid polished work surfaces



Desk

- made from closed profiles
- chrome-plated
- glass work surface and shelf

You can create many different designs for work and laboratory furniture from the extensive range of *Paletti* profiles. Let the *Paletti* team and its distributors help you design your own custom and ergonomic furniture systems to suit most working environments.



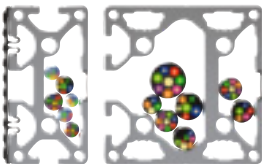
File

- made from 30 x 30 R 90 profiles and aluminium sheet material (Alucobond®)



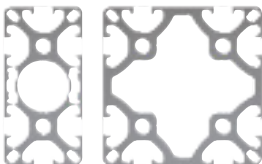
Table Profiles

For bordering the work surface.



Open Profiles

Suitable for attaching as table legs. Inner chambers can be filled with cables. The t-slots are closed by cover profiles.



Tear-Off Profiles

Completely closed t-slots which can be easily torn-off for attaching of profiles.



Closed Profiles

For manufacturing of round columns or curved corners.



Laboratory Furniture

- made from standard profiles
- back structure made from R 40 / 80 45° profile
- canopy with halogen overhead lights
- constructed from 40 x 40 corner profile
- using central fastener miter connector
- electricity for compressed air is supplied via ducting profile 80 x 80
- beech work surface inlaid table profiles
- Alucobond® panels supported in the profile t-slots
- shelves can be integrated into the design of furniture
- computer shelves can be integrated into the design of furniture



Work Bench

- manufactured from closed profiles
- solid work surface with integral foot support

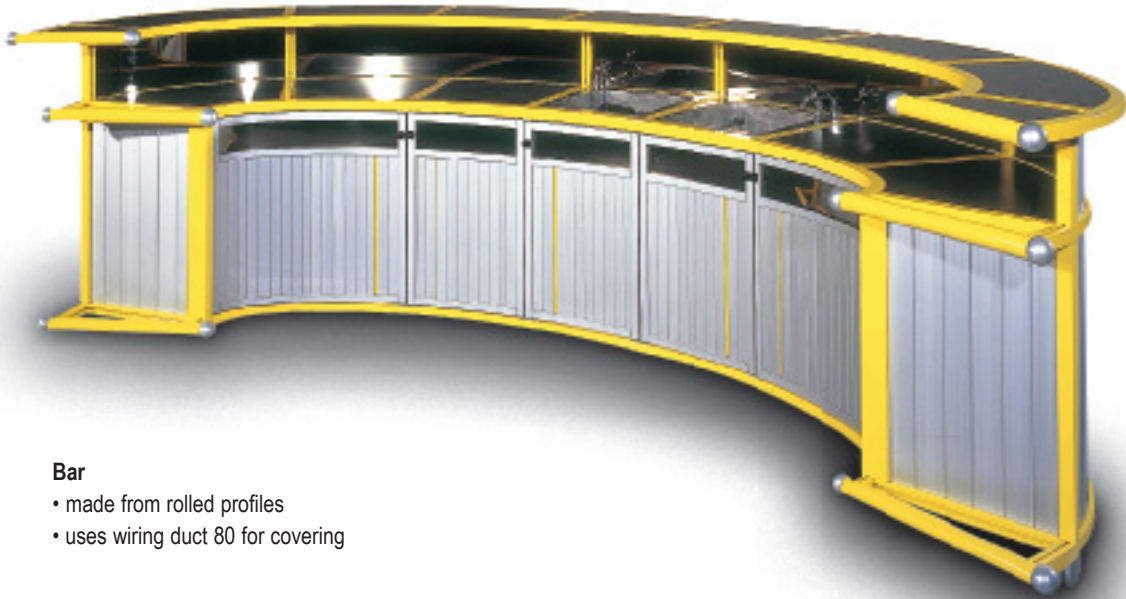


Foot Support

- manufactured from standard profiles
- adjustable via recirculating ball slide and gas pressure dampers
- foot support features a beech plywood surface and is covered with a non-slip and 40 x 40 profile finish

Operation

To change height apply light upward pressure to the foot platform; the gas pressure dampers lift the ball slide. To lower the foot platform slightly raise the front edge and push down the back edge with the other foot; the foot support lowers to the required position.



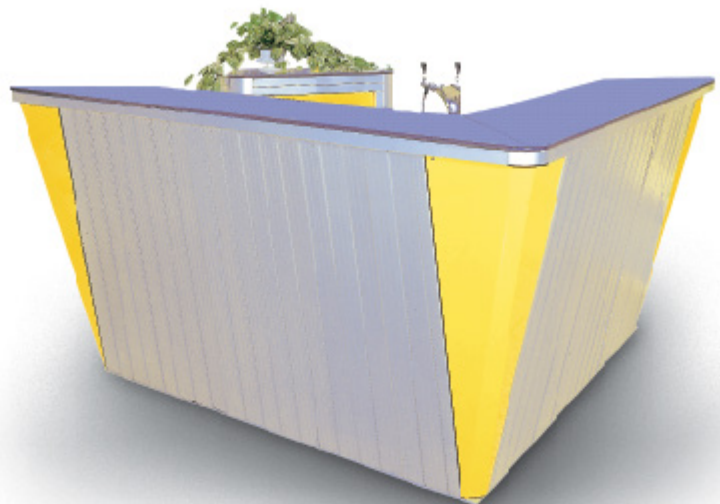
Bar

- made from rolled profiles
- uses wiring duct 80 for covering



Bar Stools

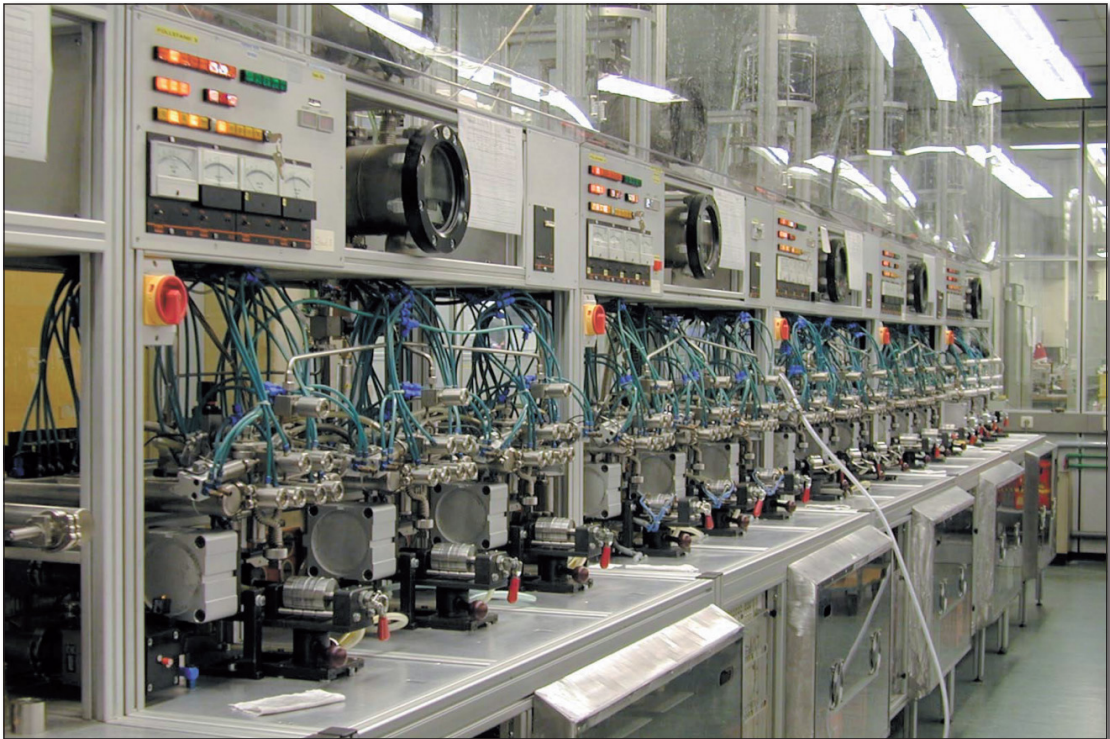
- made from rolled profiles

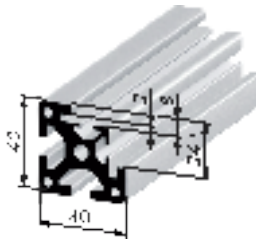


Delta Bar

- cellulose sheet table top
- shelves made from aluminum sheets and wiring duct 80







SP7001N

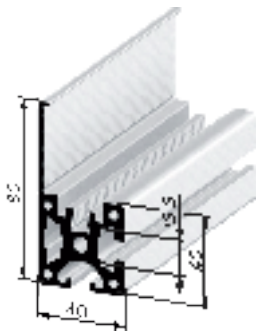
40

Table Profiles 40 x 40

Part No	Description	Length	Weight
SP7001N	Table Profile 40 x 40	cut	2.02 kg/m
SP7000N3000	Table Profile 40 x 40	3000 mm	2.02 m
SP7000N6000	Table Profile 40 x 40	6000 mm	12.12 m

Application: Suitable for constructing work benches and laboratory work stations.

Material: aluminum, natural anodized



SP2501N

40

Table Profiles 40 x 80

Part No	Description	Length	Weight
SP2501N	Table Profile 40 x 80	cut	2.61 kg/m
SP2500N3000	Table Profile 40 x 80	3000 mm	7.82 m
SP2500N6000	Table Profile 40 x 80	6000 mm	15.63 m

Application: Suitable for constructing work benches and laboratory work stations.

Material: aluminum, natural anodized



non-grooved

grooved

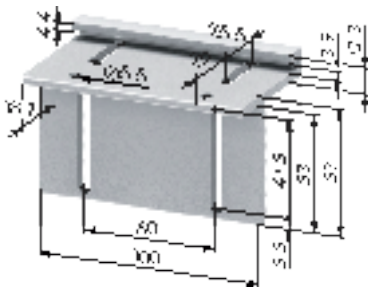
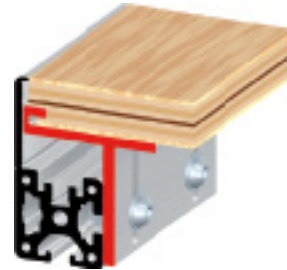
The long front face of the table profile is designed to enclose the work surface edge and eliminate the need for expensive edge preparation. An important feature of this profile is the thin front face that does not detract from the color or decorative face of the work surface. The work surface is supported off an angle profile with or without grip grooves and fastened to the table profile by screws and t-nuts as shown in the illustration above. The table profiles are cut at an angle of 45 degrees and are fastened together using the miter connector SV1901V.

Support Angles, grooved

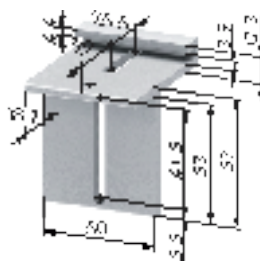
Part No	Description	Weight
SZ5200N	Support Angle 100 grooved, 12 - 23 mm	136.2 g
SZ5201N	Support Angle 50 grooved, 12 - 23 mm	68.0 g
SZ5202N	Support Angle 100 grooved, 24 - 35 mm	120.0 g
SZ5203N	Support Angle 50 grooved, 24 - 35 mm	68.2 g

Application: Suitable for connecting **grooved** table / work tops (of varying thicknesses) to profiles.

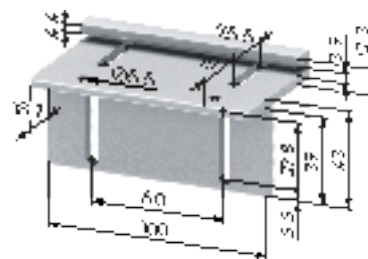
Material: aluminum, natural anodized



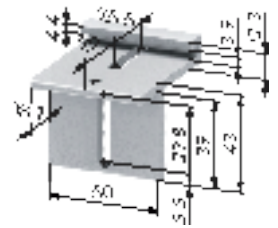
SZ5200N



SZ5201N



SZ5202N



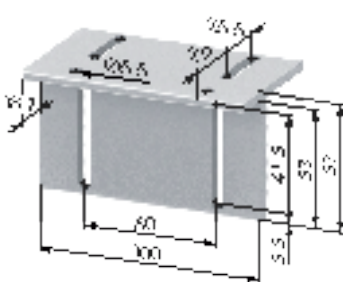
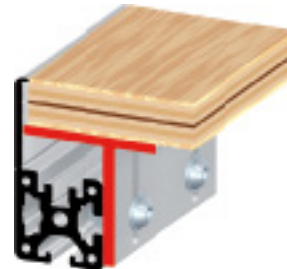
SZ5203N

Support Angles, non-grooved

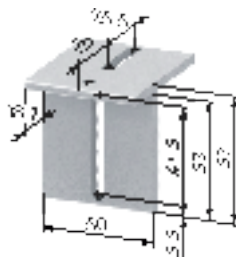
Part No	Description	Weight
SZ5210N	Support Angle 100, 12 - 23 mm	124 g
SZ5211N	Support Angle 50, 12 - 23 mm	61 g
SZ5212N	Support Angle 100, 24 - 35 mm	106 g
SZ5213N	Support Angle 50, 24 - 35 mm	53 g

Application: Suitable for connecting **non-grooved** table / work tops (of varying thicknesses) to profiles.

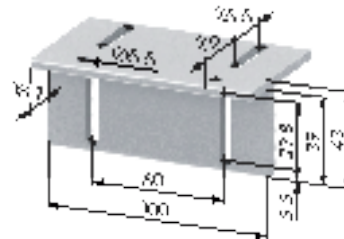
Material: aluminum, natural anodized



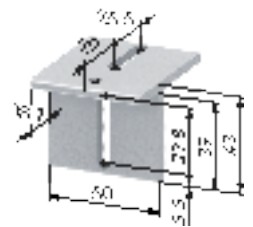
SZ5210N



SZ5211N



SZ5212N

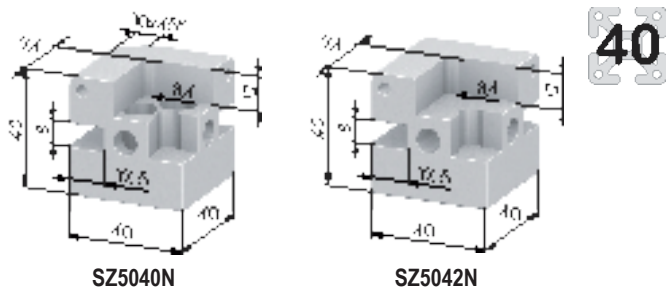


SZ5213N

K Workstations and Laboratory Furniture

8 Table Corners

PALETTI



SZ5040N

SZ5042N



SZ5080V

SZ5082V



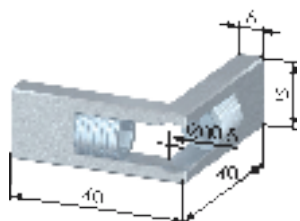
Table Corners

Part No	Description	Weight
SZ5040N	Table Corner 45°	103 g
SZ5042N	Table Corner	121 g
SZ5180N	Fixing Set For Table Corner 45°	66 g
SZ5182N	Fixing Set For Table Corner	44 g

Application: Corner connection for tables and racks, etc.

Material: aluminum, natural anodized

Accessories: • fixing set SZ5180V for SZ5040N
• fixing set SZ5182V for SZ5042N



SV1901V

Miter Connector 40 90°

Part No	Description	Weight
SZ1901V	Miter Connector 40 90°	49 g

Application: For right angled joining of table profiles.

Material: steel, zinc-plated

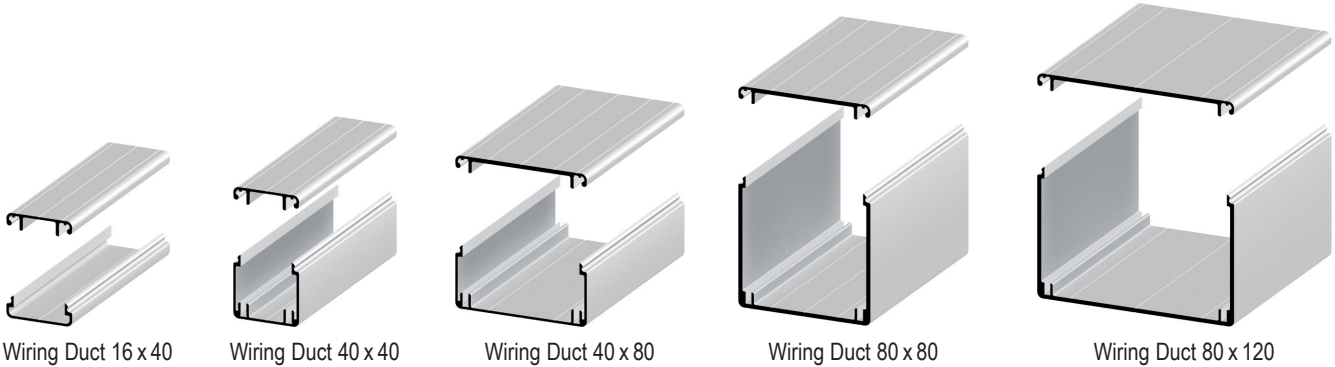
Supply: • 2x grub screw M 10 x 16



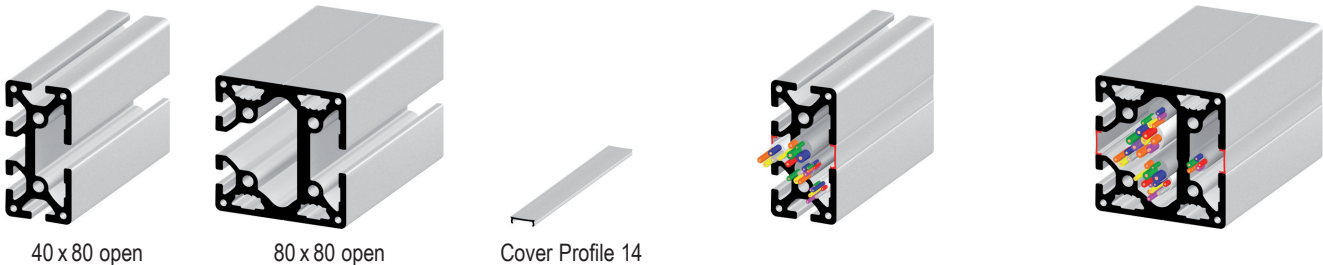
PALETTI

PRECISE, LONG-LASTING, INDIVIDUALLY

SWIVEL ARMS AND WIRE DUCTING



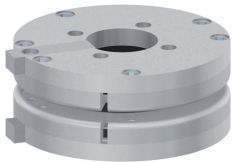
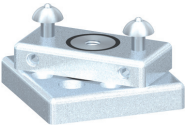
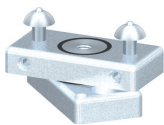
Wiring Ducts



Open Profiles



Cable Joints



Turntable 40

Turntable 80

Turntable 80, open

Turntables



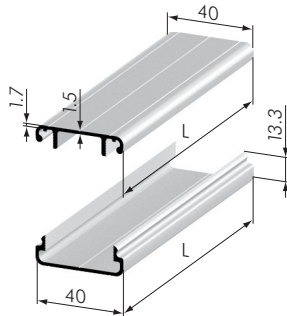
Turntable Sets 40



Turntable Sets 80

Turntable Sets

L Swivel Arms, wire Ducting
2 Wiring Ducts



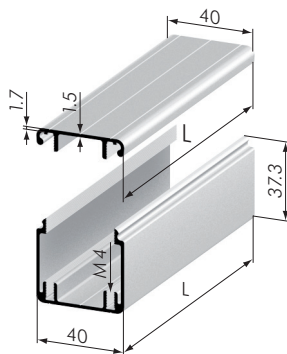
SP1300N / SP1370N

40

Wiring Duct 16 x 40			
Part No	Description	Length	Weight
SP1300N3000	Wiring Duct 16 x 40, natural	3000 mm	0.84 kg
SP1300N6000	Wiring Duct 16 x 40, natural	6000 mm	1.68 kg
SP1301N	Wiring Duct 16 x 40, natural	cut	0.28 kg/m
SP1370N3000	Wiring Duct Cover 40, natural	3000 mm	0.94 kg
SP1370N6000	Wiring Duct Cover 40, natural	6000 mm	1.88 kg
SP1371N	Wiring Duct Cover 40, natural	cut	0.31 kg/m

Application: Comprises wiring duct 16 x 40 and wiring duct cover 40.

Acc.: SZ0053S: wiring duct cap 16 x 40
 DK7981040090: metal screws DIN 7981, ST 4,2 x 9,5



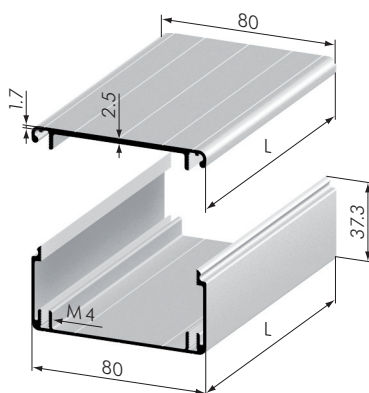
SP1310N / SP1370N

40

Wiring Duct 40 x 40			
Part No	Description	Length	Weight
SP1310N3000	Wiring Duct 40 x 40, natural	3000 mm	1.85 kg
SP1310N6000	Wiring Duct 40 x 40, natural	6000 mm	3.70 kg
SP1311N	Wiring Duct 40 x 40, natural	cut	0.62 kg/m
SP1370N3000	Wiring Duct Cover 40, natural	3000 mm	0.94 kg
SP1370N6000	Wiring Duct Cover 40, natural	6000 mm	1.88 kg
SP1371N	Wiring Duct Cover 40, natural	cut	0.31 kg/m

Application: Comprises wiring duct 40 x 40 and wiring duct cover 40.

Acc.: SZ0050S: wiring duct cap 40 x 40
 DK7981040090: metal screws DIN 7981, ST 4.2 x 9.5



SP1320N / SP1380N

40

Wiring Duct 40 x 80			
Part No	Description	Length	Weight
SP1320N3000	Wiring Duct 40 x 80, natural	3000 mm	2.34 kg
SP1320N6000	Wiring Duct 40 x 80, natural	6000 mm	4.68 kg
SP1321N	Wiring Duct 40 x 80, natural	cut	0.78 kg/m
SP1380N3000	Wiring Duct Cover 80, natural	3000 mm	1.28 kg
SP1380N6000	Wiring Duct Cover 80, natural	6000 mm	2.55 kg
SP1381N	Wiring Duct Cover 80, natural	cut	0.64 kg/m

Application: Comprises wiring duct 40 x 80 and wiring duct cover 80.

Acc.: SZ0051S: wiring duct cap 40 x 80
 DK7981040090: metal screws DIN 7981, ST 4.2 x 9.5

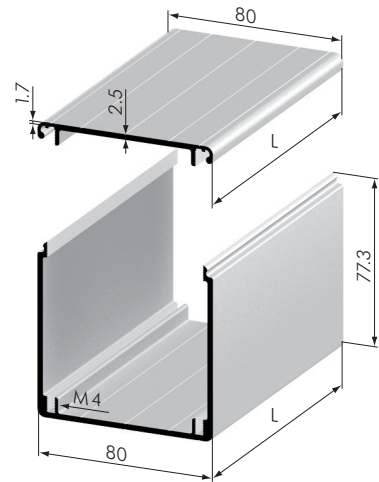
Wiring Duct 80 x 80

Part No	Description	Length	Weight
SP1330N3000	Wiring Duct 80 x 80, natural	3000 mm	4.97 kg
SP1330N6000	Wiring Duct 80 x 80, natural	6000 mm	9.94 kg
SP1331N	Wiring Duct 80 x 80, natural	cut	1.66 kg / m
SP1380N3000	Wiring Duct Cover 80, natural	3000 mm	1.28 kg
SP1380N6000	Wiring Duct Cover 80, natural	6000 mm	2.55 kg
SP1381N	Wiring Duct Cover 80, natural	cut	0.64 kg / m

Application: Comprises wiring duct 80 x 80 and wiring duct cover 80.

Acc.: SZ0052S: wiring duct cap 80 x 80
DK7981040090: metal screws DIN 7981, ST 4.2 x 9.5

40



SP1330N / SP1380N

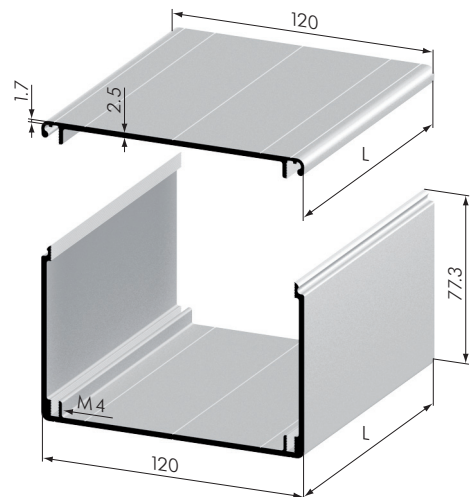
Wiring Duct 80 x 120

Part No	Description	Length	Weight
SP1340N3000	Wiring Duct 80 x 120, natural	3000 mm	5.79 kg
SP1340N6000	Wiring Duct 80 x 120, natural	6000 mm	11.58 kg
SP1341N	Wiring Duct 80 x 120, natural	cut	1.93 kg / m
SP1390N3000	Wiring Duct Cover 120, natural	3000 mm	2.73 kg
SP1390N6000	Wiring Duct Cover 120, natural	6000 mm	5.46 kg
SP1391N	Wiring Duct Cover 120, natural	cut	0.98 kg / m

Application: Comprises wiring duct 80 x 120 and wiring duct cover 120.

Acc.: SZ0055S: wiring duct cap 80 x 120
DK7981040090: metal screws DIN 7981, ST 4.2 x 9.5

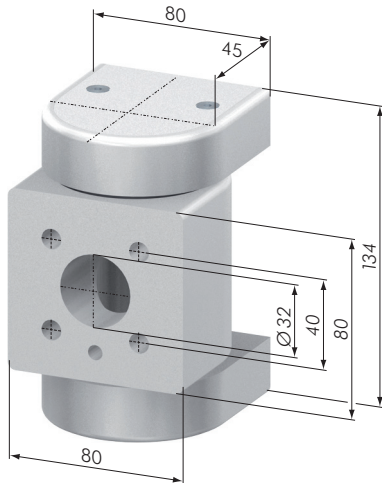
40



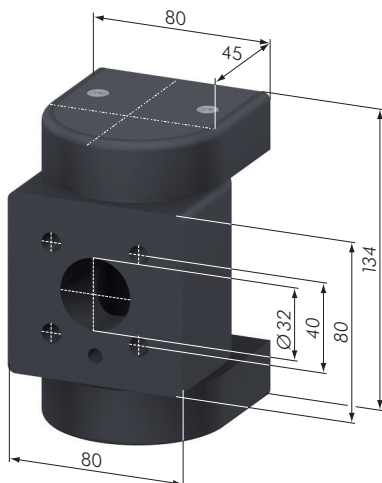
SP1340N / SP1390N

40

Cable Joints		
Part No	Description	Weight
SA5200N	Cable Joint 80, natural	1.87 kg
SA5200S	Cable Joint 80, black	1.87 kg
SZ1720V	Fixing Set For Cable Joints	



SA5200N

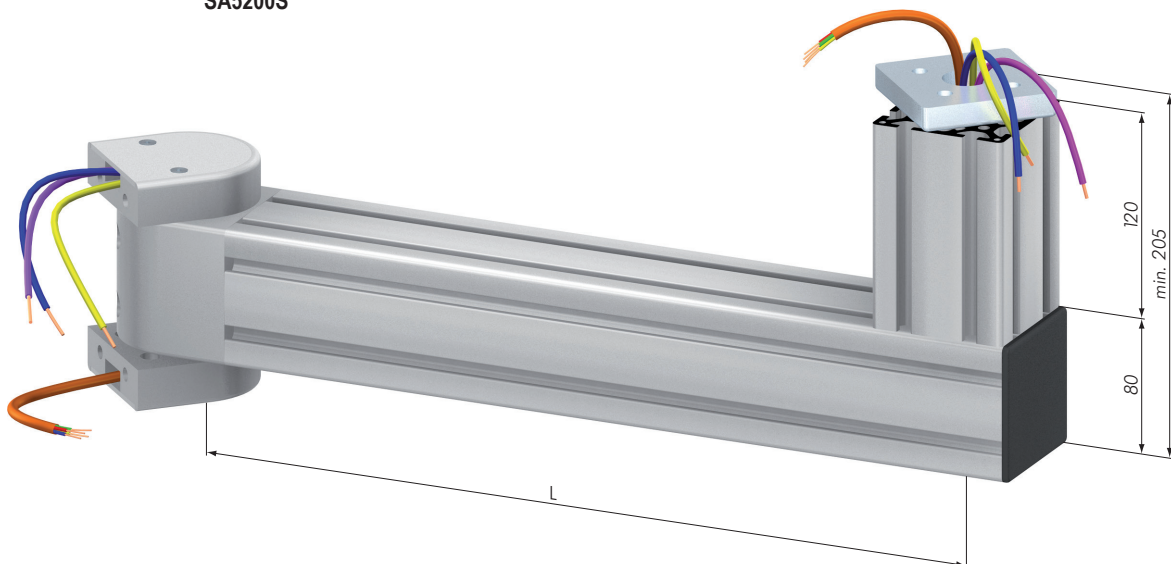


SA5200S

Application: Together with the cable arm, the cable joint forms an ideal unit for running electrical data or control cables from switch box/control cabinets to the control desk. The cable runs entirely in the profile, providing the best possible protection to the cables.

Material: aluminum, natural or black anodized

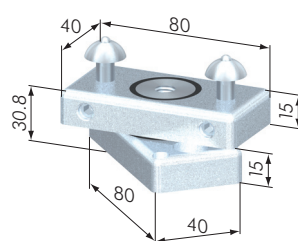
Acc.: SZ1720V: • 4x cap head screw M 8 x 70, DIN 912
• 4x central fastener 40 EQ



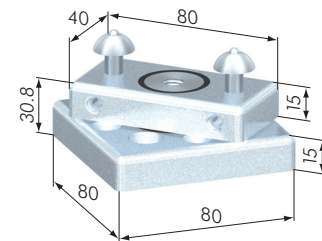
Turntables		
Part No	Description	Weight
SA5225N	Turntable 40	1.03 kg
SA5215N	Turntable 80	1.03 kg
SA5250N	Turntable 80, open	0.99 kg

Application: The turntables are used to construct moving swivel arms. The turntable 80 allows for cable runs in the *Paletti* open profiles to enter the turntable through the core hole.

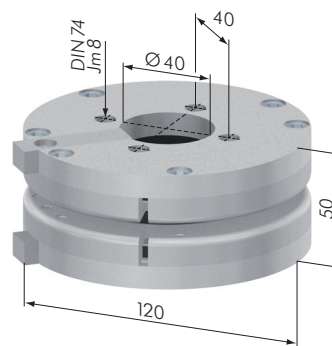
Material:
 turntable 40: steel, zinc-plated
 turntable 80: steel, zinc-plated
 turntable 80, open: aluminum, natural anodized
 glide bearing: plastic



SA5225N



SA5215N



SA5250N

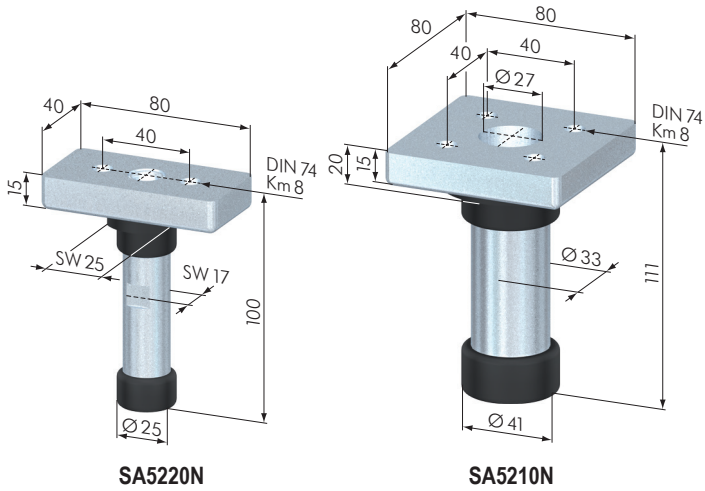
40

Turntable Sets

Part No	Description	Weight
SA5220N	Turntable Set 40, natural	474 g
SA5220S	Turntable Set 40, black	474 g
SA5210N	Turntable Set 80, natural	800 g
SA5210S	Turntable Set 80, black	800 g

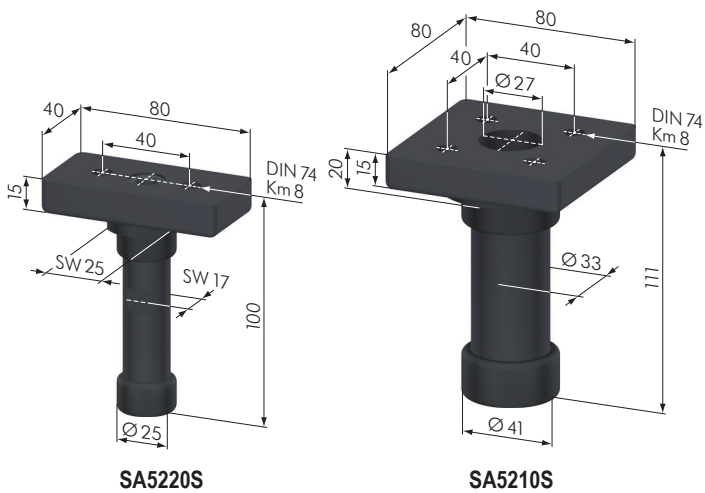
Application: The turntable set forms an ideal unit for creating swivel arms for monitors, control desks, etc. The turntable set 80 is installed in a section of profile 80 x 80 round, 120 mm long, and is supplied complete.

Material: steel, zinc-plated or zinc-plated black
POM, black



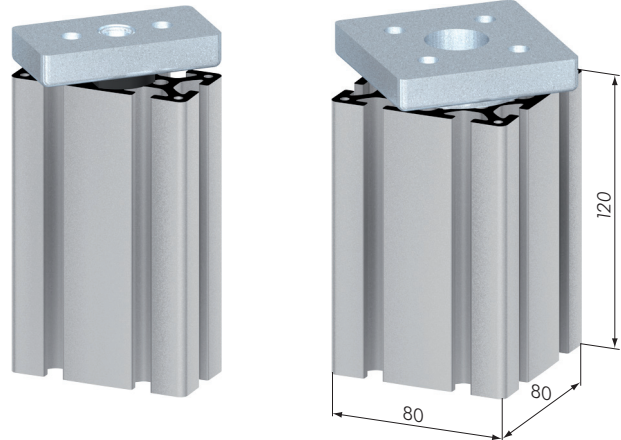
SA5220N

SA5210N



SA5220S

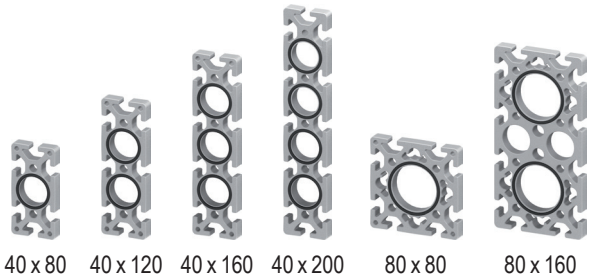
SA5210S



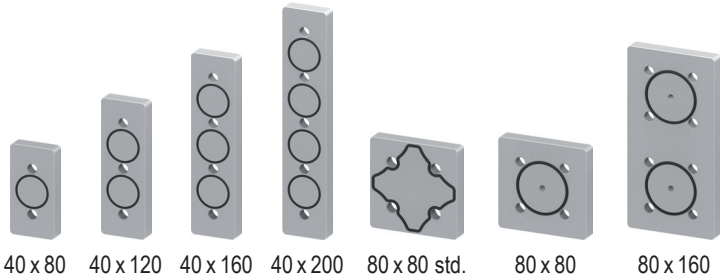
PALETTI

PRECISE, LONG-LASTING, INDIVIDUALLY

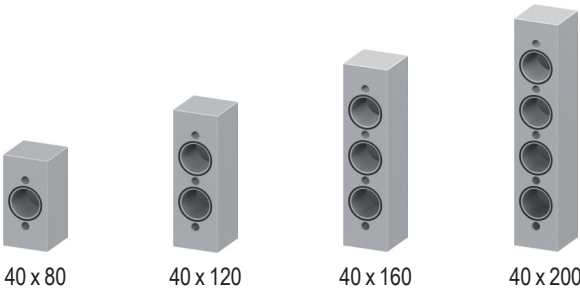
PNEUMATICS



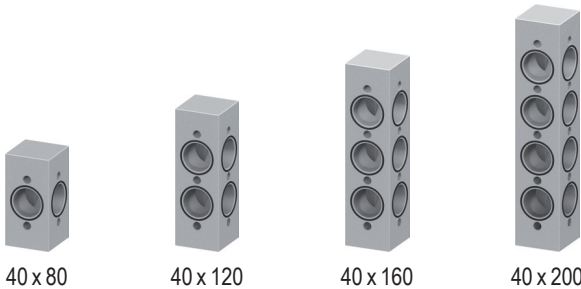
Pneumatic Joining Plates



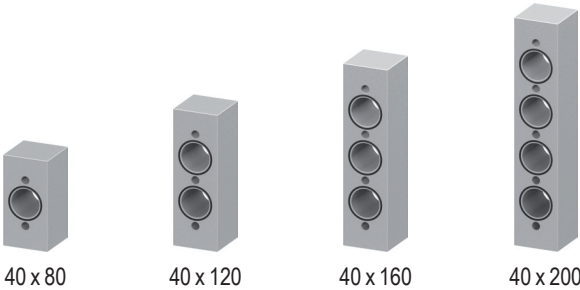
Pneumatic End Plates



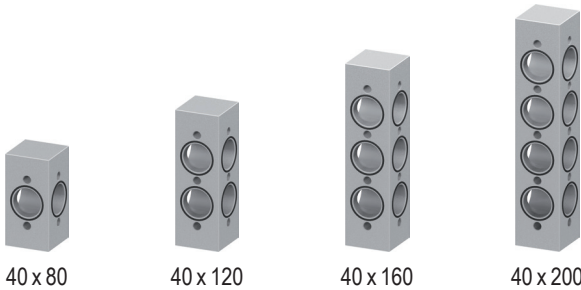
Pneumatic End Connectors



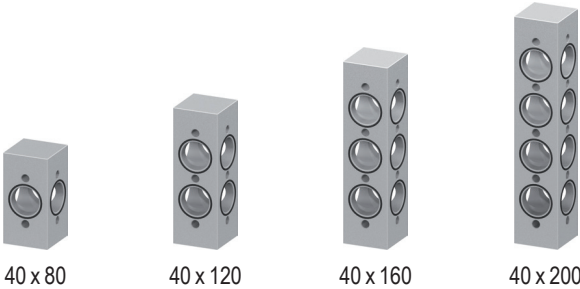
Pneumatic Corner Connectors



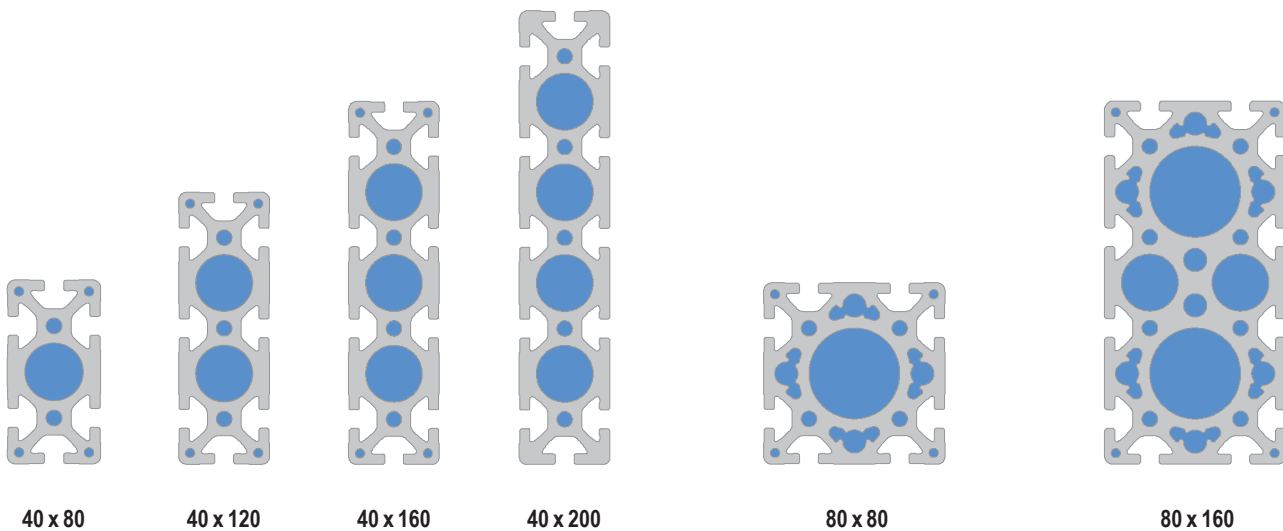
Pneumatic Joining Connectors



Pneumatic T-Connectors



Pneumatic Cross Connectors



40 x 80

40 x 120

40 x 160

40 x 200

80 x 80

80 x 160

Pneumatic Profile Connectors

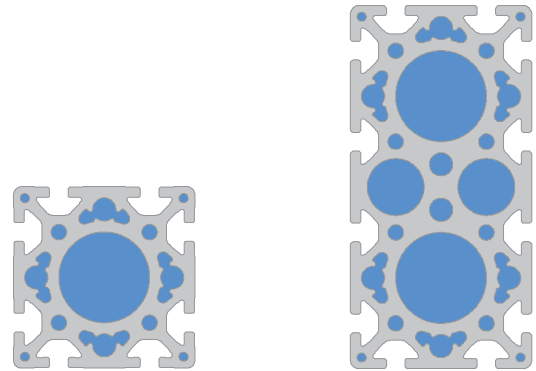
Paletti standard profiles can be used as air lines in machines, structures, and guarding in manufacturing areas. 40 x 80 up to 40 x 200 profiles are the most suitable for pneumatic systems. The smooth central core hole in the profiles creates a stable air supply without turbulence. The wall thickness of the profile can be tapped to accept pneumatic fittings. A 1" pneumatic fitting can be fixed directly into the Ø25 mm center hole.

The different chambers in the profiles can be used for various purposes. Dry or oiled air can be run independently through the larger chambers. The Ø6.8 mm holes can be used to route wiring, while the Ø4 mm holes are used for attaching adapter plates to the ends of the profile. The pneumatic profile connectors give the designer the advantage of designing complex air and/or vacuum systems in many types of machine frames or structures.

These connecting profiles use the proven *Paletti* central fastener system for extending or attaching profiles to each other to produce air line runs. O-rings between the profiles ensure that the air is sealed.

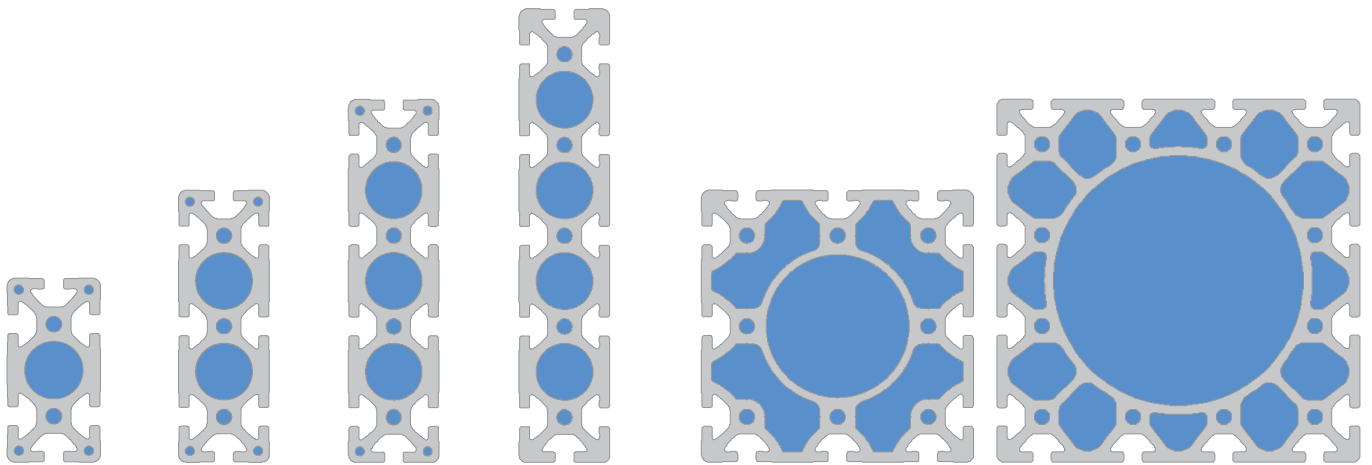
80 x 80 and 80 x 160 profiles are suitable to high volume compressed air or vacuum systems. These profiles have a high degree of structural integrity and can be used to support such things as lighting and electrical ductwork as a result.

The 80 x 160 profile can be used for both compressed air and vacuum systems simultaneously due to its two large internal cavities.



80 x 80

80 x 160



40 x 80

40 x 120

40 x 160

40 x 200

120 x 120

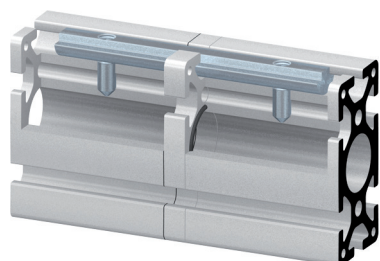
160 x 160

Flat Gaskets

A flat gasket can also be supplied that encompasses all of the bore holes of the profiles 40 x 80 up to 40 x 200. Flat gaskets can also be supplied for 80 x 80, 80x160, 120 x 120, and 160 x 160 profiles allowing them to be used for high volume compressed air. The connection of the profiles occurs via the central fastener system.

Due to the elasticity of the gasket material, the seal may become compromised shortly after the initial installation. Therefore, the fasteners should be checked and tightened if necessary after one day.

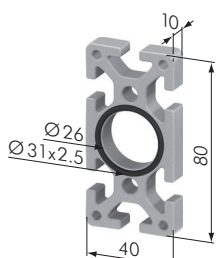
40



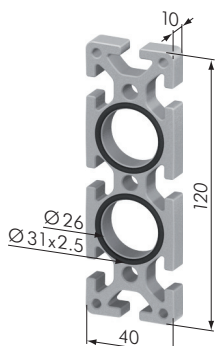
Pneumatic Joining Plates		
Part No	Description	Weight
SD0102N	Pneumatic Joining Plate 40 x 80	41 g
SD0103N	Pneumatic Joining Plate 40 x 120	58 g
SD0104N	Pneumatic Joining Plate 40 x 160	76 g
SD0105N	Pneumatic Joining Plate 40 x 200	95 g
SD0112N	Pneumatic Joining Plate 80 x 80	78 g
SD0114N	Pneumatic Joining Plate 80 x 160	159 g

Application: When the profile is used as a compressed air line the joint plate is used to seal the two profiles. The pneumatic joining plate is held in position by the fastening system (SV3500V).

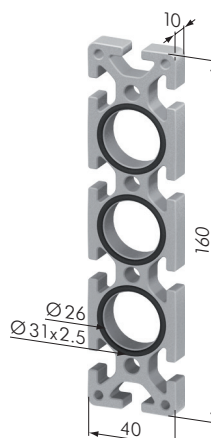
Material: aluminum block with O-ring seal



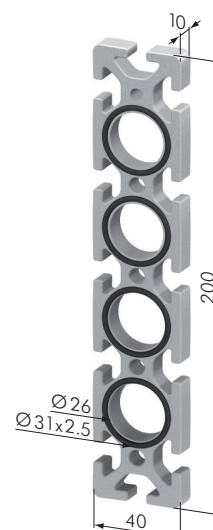
SD0102N



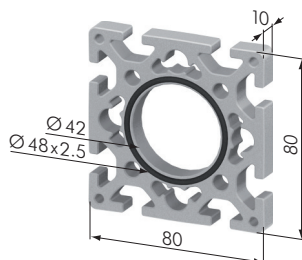
SD0103N



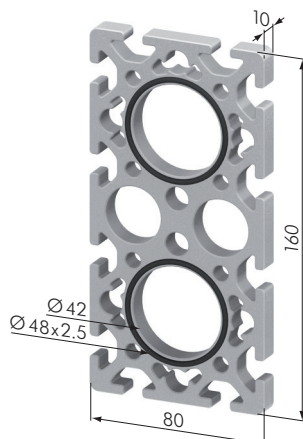
SD0104N



SD0105N



SD0112N



SD0114N

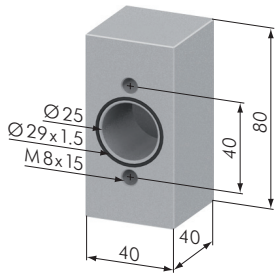
Pneumatic End Connectors 40



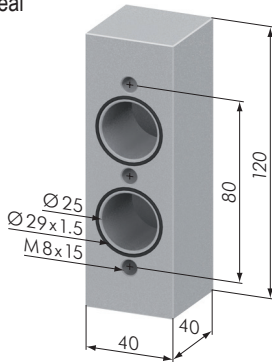
Part No	Description	Weight
SD0202N	Pneumatic End Connector 40 x 80	305 g
SD0203N	Pneumatic End Connector 40 x 120	442 g
SD0204N	Pneumatic End Connector 40 x 160	579 g
SD0205N	Pneumatic End Connector 40 x 200	715 g

Application: Used as an end connector for compressed air lines. The 40 mm thickness enables air line connections to be made on the side of the end connector. The end connector is fixed to the profile using central fastener 40 G (SV1071V).

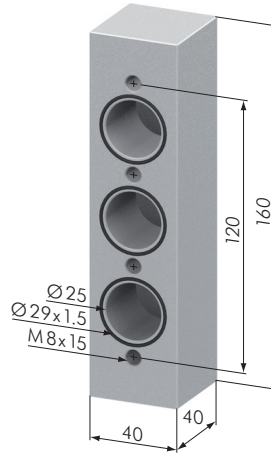
Material: aluminum block with O-ring seal



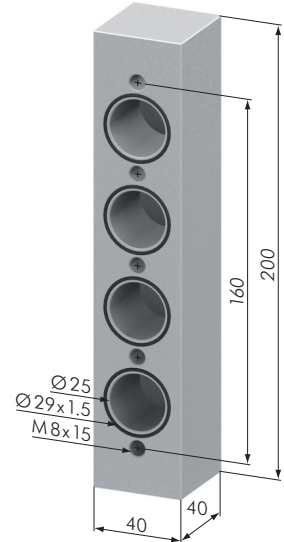
SD0202N



SD0203N



SD0204N



SD0205N

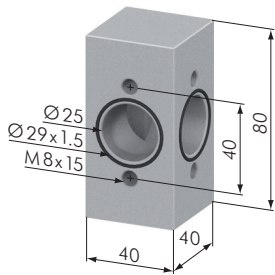
Pneumatic Corner Connectors 40



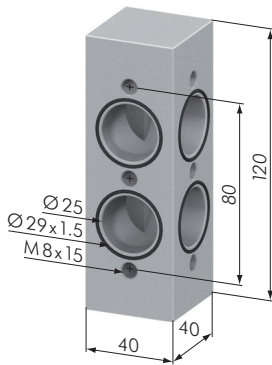
Part No	Description	Weight
SD0142N	Pneumatic Corner Connector 40 x 80	281 g
SD0143N	Pneumatic Corner Connector 40 x 120	396 g
SD0144N	Pneumatic Corner Connector 40 x 160	506 g
SD0145N	Pneumatic Corner Connector 40 x 200	634 g

Application: Right angled connection for compressed air lines. The corner connector is attached to the profile using central fastener 40 G (SV1071V).

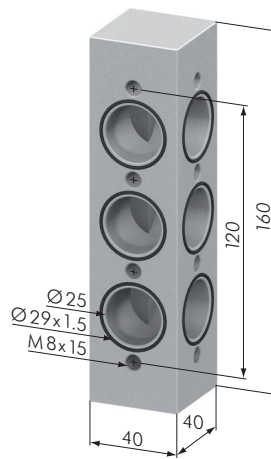
Material: aluminum block with O-ring seal



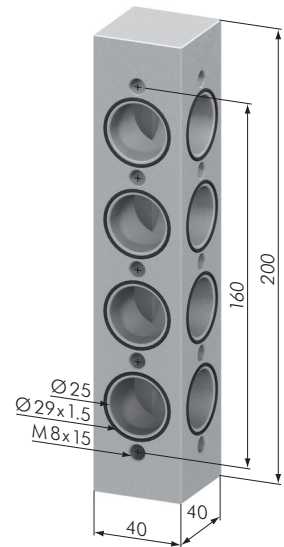
SD0142N



SD0143N



SD0144N



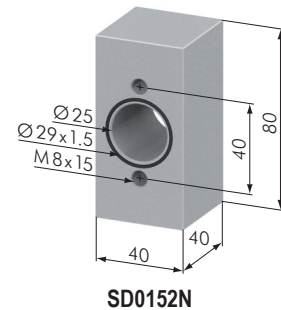
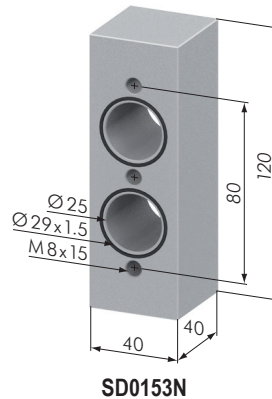
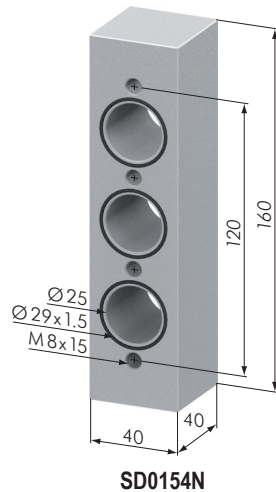
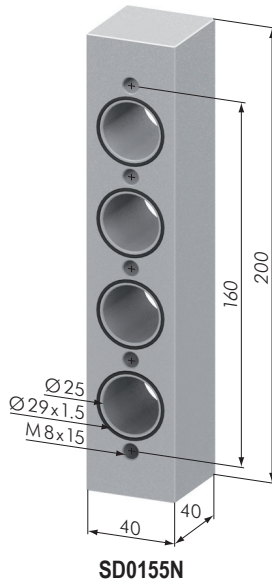
SD0145N



Pneumatic Joining Connectors 40		
Part No	Description	Weight
SD0152N	Pneumatic Joining Connector 40 x 80	280 g
SD0153N	Pneumatic Joining Connector 40 x 120	396 g
SD0154N	Pneumatic Joining Connector 40 x 160	506 g
SD0155N	Pneumatic Joining Connector 40 x 200	634 g

Application: For sealing of two profiles in compressed air lines. The 40 mm thickness enables air line connections to be made on the side of the end connector. The end connector is fixed to the profile using central fasteners type G.

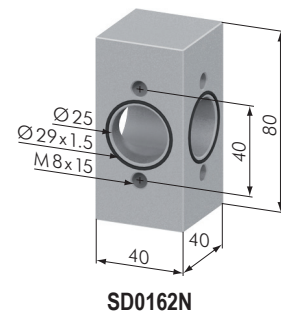
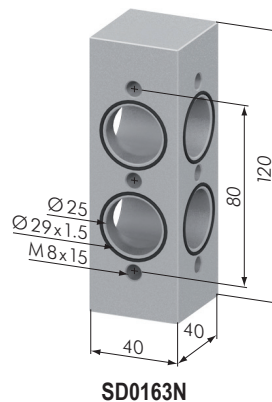
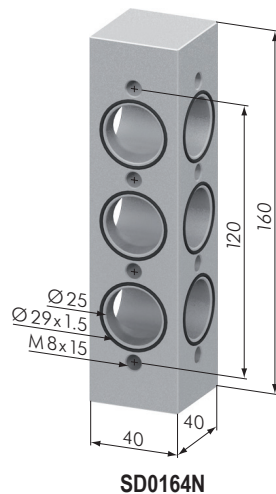
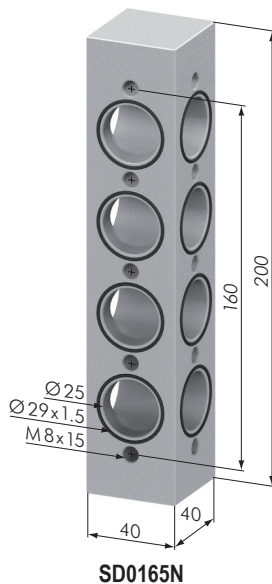
Material: aluminum block with O-ring seal



Pneumatic T-Connectors 40		
Part No	Description	Weight
SD0162N	Pneumatic T-Connector 40 x 80	270 g
SD0163N	Pneumatic T-Connector 40 x 120	360 g
SD0164N	Pneumatic T-Connector 40 x 160	454 g
SD0165N	Pneumatic T-Connector 40 x 200	575 g

Application: T-connector for compressed air lines. The t-connector is attached to the profiles using central fasteners type G.

Material: aluminum block with O-ring seal

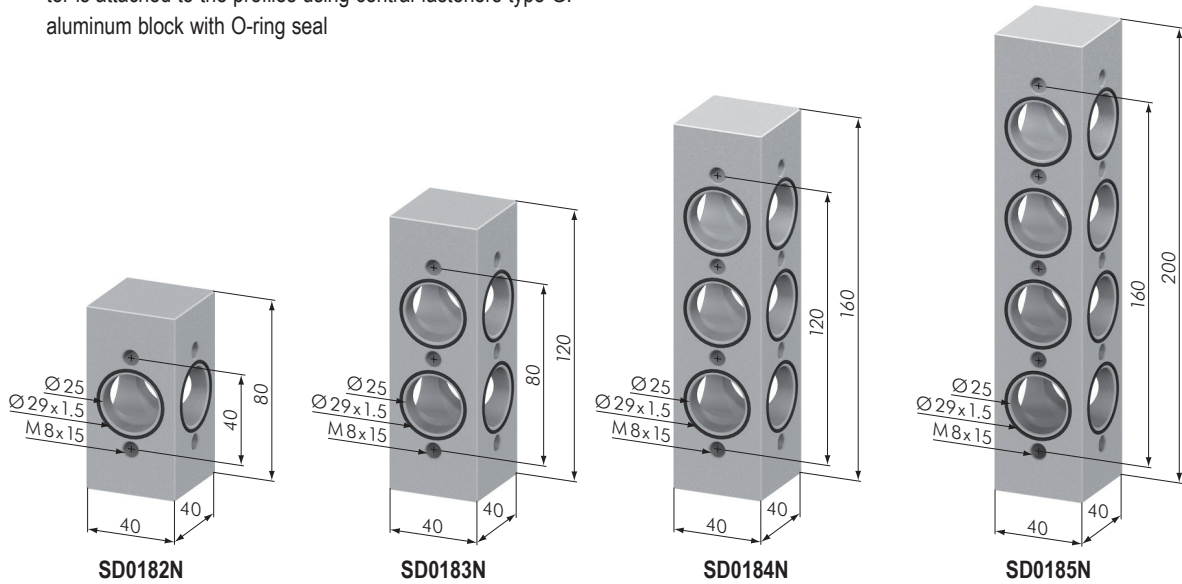




Pneumatic Cross Connectors 40		
Part No	Description	Weight
SD0182N	Pneumatic Cross Connector 40 x 80	250 g
SD0183N	Pneumatic Cross Connector 40 x 120	327 g
SD0184N	Pneumatic Cross Connector 40 x 160	406 g
SD0185N	Pneumatic Cross Connector 40 x 200	503 g

Application: Cross-connector for compressed air lines. The cross connector is attached to the profiles using central fasteners type G.

Material: aluminum block with O-ring seal



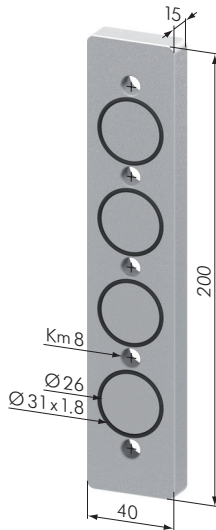
40

Pneumatic End Plates 40

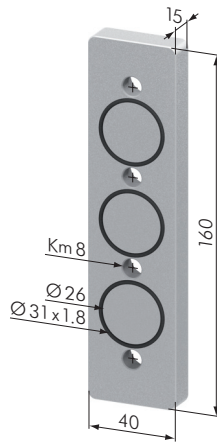
Part N°	Description	Weight
SD0122N	Pneumatic End Plate 40 x 80	116 g
SD0123N	Pneumatic End Plate 40 x 120	157 g
SD0124N	Pneumatic End Plate 40 x 160	232 g
SD0125N	Pneumatic End Plate 40 x 200	290 g

Application: The pneumatic end plates cap the ends of compressed air lines. On request the end plates can be fitted with pneumatic fittings. The type of fittings required should be advised upon ordering.

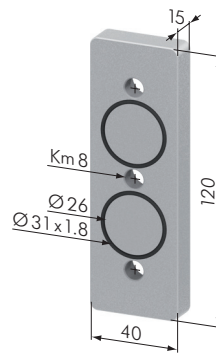
Material: aluminum block with O-ring seal



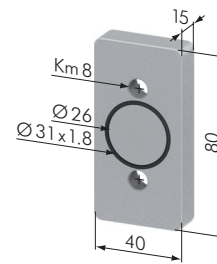
SD0125N



SD0124N



SD0123N



SD0122N

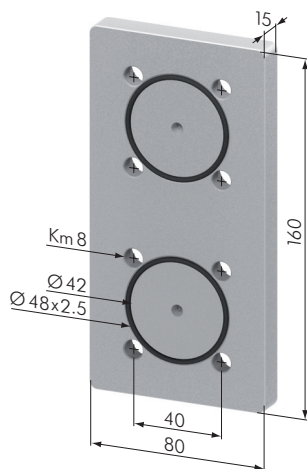
40

Pneumatic End Plates 80

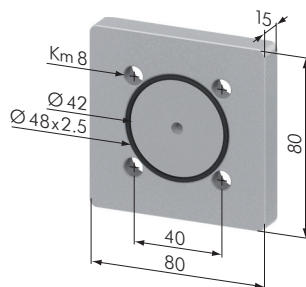
Part N°	Description	Weight
SD0120N	Pneumatic End Plate 80 x 80 standard profile	
SD0126N	Pneumatic End Plate 80 x 80	244 g
SD0128N	Pneumatic End Plate 80 x 160	488 g

Application: The pneumatic end plates cap the ends of compressed air lines. On request the end plates can be fitted with pneumatic fittings. The type of fittings required should be advised upon ordering.

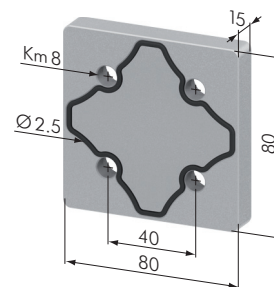
Material: aluminum block with O-ring seal



SD0114N



SD0126N



SD0120N

Paletti catalogs available on <https://paletti-group.com/media-center/>



Paletti Profilsysteme GmbH & Co. KG

Gewerbepark Meißen 17
D - 32423 Minden

+49 (5 71) 38 73 03 - 0
sales@paletti-group.com
www.paletti-group.com

General terms and conditions:
<https://paletti-group.com/agb/>

Concept, Design, Realization and Photos

Every effort has been made to ensure that the information in this product overview is accurate at the time of issues. Nevertheless Paletti cannot accept liability in respect of any errors or omissions herein. Reproduction, including extracts, is permitted only with our written consent. Changes, in the sense of technical improvements, reserved.

© 2023 Paletti Profilsysteme GmbH & Co. KG

